

**ARMY  
AIR FORCE  
U.S. MARINE CORPS**

**\*TM9-2805-257-24P  
TO 38G2-103-4  
SL-4-03521B**

---

**TECHNICAL MANUAL**

**UNIT, DIRECT SUPPORT AND GENERAL SUPPORT  
MAINTENANCE MANUAL INCLUDING  
REPAIR PARTS AND SPECIAL TOOLS LIST**

**ENGINE, GASOLINE, 3HP  
MILITARY STANDARD MODELS**

<b>DOD MODEL</b>	<b>NSN</b>
<b>2A016-1</b>	<b>2805-00-601-5127</b>
<b>2A016-2</b>	<b>2805-00-714-8553</b>
<b>2A016-3</b>	<b>2805-00-072-4871</b>
<b>2A016-4</b>	<b>2805-01-169-1100</b>

DISTRIBUTION STATEMENT A: Approved for public release; distribution is unlimited.

\* This manual supersedes TM5-2805-257-24P/T0 38G2-103-4/SL403521A, 30 September 1975, including all changes.

---

**HEADQUARTERS, DEPARTMENTS OF THE ARMY, THE  
AIR FORCE AND HEADQUARTERS U.S. MARINE CORPS  
30 APRIL 1993**



TM 9-2805-257-24P  
TO 38G2-103-4  
SL-4-03521B

CHANGE

HEADQUARTERS, DEPARTMENTS OF THE ARMY  
THE AIR FORCE AND HEADQUARTERS U.S. MARINE CORPS  
WASHINGTON, D.C., 29 April 1994

NO. 1

Unit, Direct Support and General Support Maintenance  
Repair Parts and Special Tools List

ENGINE, GASOLINE, 3HP MILITARY STANDARD  
MODEL 2A016-1, NSN 2805-00-601-5127  
MODEL 2A016-2, NSN 2805-00-714-8553  
MODEL 2A016-3, NSN 2805-00-072-4871  
MODEL 2A016-4, NSN 2805-01-169-1100

DISTRIBUTION STATEMENT A: Approved for public release; distribution is unlimited.

TM9-2805-257-24P/TO 38G2-103-4/SL-4-03521B, 30 April 1993, is changed as follows:

1. Remove and insert pages as indicated below. New or changed text material is indicated by a vertical bar in the margin. An illustration change is indicated by a miniature pointing hand.

Remove pages

Insert pages

22-1 and 22-2

22-1 and 22-2

2. Retain this sheet in front of manual for reference purposes.

TM 9-2805-257-24P

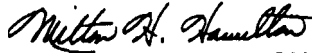
TO 38G2-103-4

SL-4-03521B

C 1

By Order of the Secretary of the Army:

Official:



MILTON H. HAMILTON  
*Administrative Assistant to the  
Secretary of the Army*  
06724

GORDON R. SULLIVAN  
*General, United States Army  
Chief of Staff*

DISTRIBUTION:

To be distributed in accordance with DA Form 12-25-E, block no. 6048,  
requirements for TM 9-2805-257-24P.

TECHNICAL MANUAL  
NO. 9-2805-257-24P

HEADQUARTERS, DEPARTMENTS OF THE ARMY,  
THE AIR FORCE AND HEADQUARTERS U. S. MARINE CORPS  
WASHINGTON D.C.,30 APRIL 1993

### TECHNICAL MANUAL

#### Unit, Direct Support and General Support Maintenance Repair Parts and Special Tools List

#### ENGINE, GASOLINE, 3HP MILITARY STANDARD

MODEL 2A016-1, NSN 2805-00-601-5127

MODEL 2A016-2, NSN 2805-00-714-8553

MODEL 2A016-3, NSN 2805-00-072-4871

MODEL 2A016-4, NSN 2805-01-169-1100

Current as of 5 February 1993

#### REPORTING ERRORS AND RECOMMENDING IMPROVEMENTS

You can help improve this manual. If you find any mistakes or if you know of a way to improve the procedures, please let us know. Mail your letter, DA Form 2028 (Recommended Changes to Publications and Blank Forms), or DA Form 2028-2 located in the back of this manual direct to: Commander, US Army Aviation and Troop Command, ATTN: AMSAT-I-MP, 4300 Goodfellow Blvd., St. Louis, MO 63120-1798. A reply will be furnished directly to you.

For Air Force, submit AFTO Form 22 (Technical Order System Publication Improvement Report and Reply) in accordance with paragraph 6-5, Section VI, T.O. 00-5-1. Forward to Commander, San Antonio Air Logistics Center, ATTN: SA-ALC/TIRTR, Kelly Air Force Base, Texas 78241-5000.

Marine Corps users submit NAVMC 10772 Form to Commanding General, Marine Corps Logistics Base (Code 850) Albany, GA 31 704-5000.

DISTRIBUTION STATEMENT A: Approved for public release; distribution is unlimited.

### TABLE OF CONTENTS

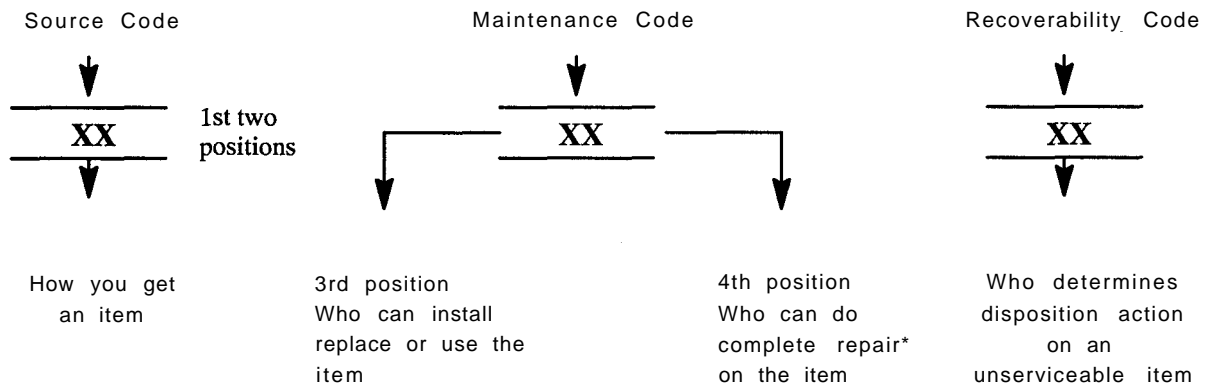
	PAGE	ILLUS/ FIGURE
Section I Introduction . . . . .	1	
Section II Repair Part . . . . .	1-1	
Group 01 Fuel Filter Assembly		
Fuel Filter Assembly . . . . .	1-1	1
Group 02 Cooling Assembly		
Flywheel and Cylinder Head Covers, Lower Air Duct, and Ignition		
Switch . . . . .	2-1	2
Group 03 High Tension Cables and Spark Plugs		
High Tension Cable Assembly . . . . .	3-1	3

	PAGE	ILLUS/ FIGURE
Group 04	Air Cleaner Assembly	
	Air Cleaner and Components . . . . .	4-1      4
Group 05	Rocker Arm Cover Assembly	
	Relief Valve and Rocker Cover . . . . .	5-1      5
Group 06	Oil Fill Tube and Gage Assembly	
	Oil Fill Tube and Gage . . . . .	6-1      6
Group 07	Oil Pan Assembly	
	Oil Pan . . . . .	7-1      7
Group 08	Engine Speed Governor and Controls	
	Engine Speed Governor Assembly (with Steel Gear) . . . . .	8-1      8
	Engine Speed Governor Assembly (with Plastic Gear) . . . . .	9-1      9
	Governor Control Housing . . . . .	10-1     10
Group 09	Ignition System	
	Contact and Governor Cover . . . . .	11-1     11
	Ignition Condenser, Lead and Contact . . . . .	12-1     12
	Breakerless Ignition Control Unit . . . . .	13-1     13
	Low Voltage Cable . . . . .	14-1     14
Group 10	Breather Line Assembly	
	Breather Line . . . . .	15-1     15
Group 11	Carburetor and Throttle Control	
	Carburetor . . . . .	16-1     16
	Throttle Control . . . . .	17-1     17
Group 12	Fuel Line and Fuel Pump Assembly	
	Fuel Line and Pump . . . . .	18-1     18
Group 13	Flywheel Assembly	
	Flywheel Assembly . . . . .	19-1     19
Group 14	Manifolds	
	Intake and Exhaust . . . . .	20-1     20
Group 15	Cylinder Head Assembly	
	Cylinder Head Assembly . . . . .	21-1     21
Group 16	Piston and Connecting Rod Assembly	
	Piston and Connecting Rod Assembly . . . . .	22-1     22
Group 17	Bearing Cap Assembly	
	Cap Assembly, Bearing . . . . .	23-1     23
Group 18	Crankshaft Assembly	
	Crankshaft . . . . .	24-1     24
Group 19	Camshaft, Axle, and Valve Tappets	
	Camshaft, Axle, Valve Tappets . . . . .	25-1     25
Group 20	Crankcase Assembly	
	Crankcase . . . . .	26-1     26
Section III.	Special Tools List (Not Applicable)	
Section IV	Cross Reference Index	
	National Stock Number Index... . . . .	I-1
	Part Number Index . . . . .	I-4
	Figure and item Number index... . . . .	I-11

## UNIT, DIRECT SUPPORT AND GENERAL SUPPORT MAINTENANCE REPAIR PARTS AND SPECIAL TOOLS LIST

### Section I. INTRODUCTION

1. SCOPE. This RPSTL lists and authorizes spares and repair parts; special tools; special test, measurement, and diagnostic equipment (TMDE); and other special support equipment required for performance of unit, direct support, and general support maintenance of the Engine, Gasoline, 3 hp, Military Standard Models. It authorizes the requisitioning, issue, and disposition of spares, repair parts and special tools as indicated by the source, maintenance and recoverability (SMR) codes.
2. GENERAL. In addition to this section, Introduction, this Repair Parts and Special Tools List is divided into the following sections:
  - a. Section II. Repair Parts List. A list of spares and repair parts authorized by this RPSTL for use in the performance of maintenance. This list also includes parts which must be removed for replacement of the authorized parts. Parts lists are composed of functional groups in ascending alphanumeric sequence, with the parts in each group listed in ascending figure and item number sequence. Bulk materials are listed in item name sequence. Items are shown in the associated illustration(s)/figure(s).
  - b. Section III. Special Tools List. A list of special tools, special TMDE, and other special support equipment authorized by this RPSTL (as indicated by Basis of Issue (BOI) information in DESCRIPTION AND USABLE ON CODE column) for the performance of maintenance.
  - c. Section IV. Cross-Reference Index. A list, in National Item Identification Number (NIIN) sequence, of all National stock numbered items appearing in the listing, followed by a list in alphanumeric sequence of all part numbers appearing in the listings. National stock numbers and part numbers are cross referenced to each illustration figure and item number appearance. The figure and item number index lists figure and item numbers in alphanumeric sequence and cross references NSN, CAGEC and part number.
3. EXPLANATION OF COLUMNS (SECTIONS II AND III).
  - a. ITEM NO. (Column (1)). Indicates the number used to identify items called out in the illustration.
  - b. SMR Code (Column (2)). The Source, Maintenance, and Recoverability (SMR) code is a 5-position code containing supply/requisitioning information, maintenance category authorization criteria, and disposition instruction, as shown in the following breakout:



\*Complete Repair: Maintenance capacity, capability, and authority to perform all corrective maintenance tasks of the "Repair" function in a use/user environment in order to restore serviceability to a failed item.

(1) Source Code. The source code tells you how to get an item needed for maintenance, repair, or overhaul of an end item/equipment. Explanations of source codes follows:

<b>Source Code</b>	<b>Explanation</b>
PA PB PC** PD PE PF PG	<p>Stocked items; use the applicable NSN to request/requisition items with these source codes. They are authorized to the category indicated by the code entered in the 3rd position of the SMR code.</p> <p>**NOTE: Items coded PC are subject to deterioration.</p>
KD KF KB	<p>Items with these codes are not to be requested/requisitioned individually. They are part of a kit which is authorized to the maintenance category indicated in the 3rd position of the SMR code. The complete kit must be requisitioned and applied.</p>
MO - (Made at Unit/AVUM Level) MF - (Made at DS/AVUM Level) MH - (Made at GS Level) ML - (Made at Specialized Repair Activity (SRA)) MD - (Made at Depot)	<p>Items with these codes are not to be requested/requisitioned individually. They must be made from bulk material which is identified by the part number in the DESCRIPTION and USABLE ON CODE (UOC) column and listed in the Bulk Material group of the repair parts list in this RPSTL. If the item is authorized to you by the 3rd position code of the SMR code, but the source code indicates it is made at a higher level, order the item from the higher level of maintenance.</p>
AO - (Assembled by Unit/AVUM Level) AF - (Assembled by DS/AVIM Level) AH - (Assembled by GS Category) AL - (Assembled by SRA) AD - (Assembled by Depot)	<p>Items with these codes are not to be requested/requisitioned individually. The parts that make up the assembled item must be requisitioned or fabricated and assembled at the level of maintenance indicated by the source code. If the 3rd position code of the SMR code authorizes you to replace the item, but the source code indicates the items are assembled at a higher level, order the item from the higher level of maintenance.</p>
XA -	Do not requisition "XA"-coded item, Order its next higher assembly. (Refer to the NOTE below.)
XB -	If an "XB" item is not available from salvage, order it using the CAGEC and part number given.
XC -	Installation drawing, diagram, instruction sheet, field service drawing, that is identified manufacturer's part number.
XD -	Item is not stocked. Order an "XD"-coded item through normal supply channels using the CAGEC and part number given ,if no NSN is available.



**NOTE**

Cannibalization or controlled exchange, when authorized, maybe used as a source of supply for items with the above source codes, except for those source coded "XA" or those aircraft support items restricted by requirements of AR 750—1.

(2) Maintenance Code. Maintenance codes tell you the level(s) of maintenance authorized to USE and REPAIR support items. The maintenance codes are entered in the third and fourth positions of the SMR code as follows:

(a) The maintenance code entered in the third position tells you the lowest maintenance level authorized to remove, replace, and use an item. The maintenance code entered in the third position will indicate authorization to the following levels of maintenance.

**Maintenance**

<b>Code</b>	<b>Application/Explanation</b>
C -	Crew or operator maintenance done within unit/AVUM maintenance.
O -	Unit level/AVUM maintenance can remove, replace, and use the item.
F -	Direct support/AViM maintenance can remove, replace, and use the item.
H -	General support maintenance can remove, replace, and use the item.
L -	Specialized repair activity can remove, replace, and use the item.
D -	Depot can remove, replace, and use the item.

(b) The maintenance code entered in the fourth position tells whether or not the item is to be repaired and identifies the lowest maintenance level with the capability to do complete repair (i.e., perform all authorized repair functions.)

**NOTE**

Some limited repair may be done on an item at a lower level of maintenance, if authorized by the Maintenance Allocation Chart and SMR codes.

**Maintenance**

<b>Code</b>	<b>Application/Explanation</b>
O -	Unit/AVUM is the lowest level that can do complete repair of the item.
F -	Direct support/AViM is the lowest level that can do complete repair of the item.
H -	General Support is the lowest level that can do complete repair of the item.
L -	Specialized repair activity is the lowest level that can do complete repair of the item.
D -	Depot is the lowest level that can do complete repair of the item.
Z -	Nonreparable. No repair is authorized.
B -	No repair is authorized. No parts or special tools are authorized for the maintenance of a "B" coded item. However, the item may be reconditioned by adjusting, lubricating, etc., at the user level.

(3) Recoverability Code. Recoverability codes are assigned to items to indicate the disposition action on unserviceable items. The recoverability code is entered in the fifth position of the SMR Code as follows:

**Recoverability**

**Codes**

**Application/Explanation**

- z - Nonreparable item. When unserviceable, condemn and dispose of the item at the level of maintenance shown in 3d position of SMR Code.
- O - Reparable item. When not economically reparable, condemn and dispose of the item at unit or AVUM level.
- F - Reparable item. When uneconomically reparable, condemn and dispose of the item at the direct support or AVIM level.
- H - Reparable item. When uneconomically reparable, condemn and dispose of the item at the general support level.
- D - Reparable item. When beyond lower level repair capability, return to depot. Condemnation and disposal of item not authorized below depot level.
- L - Reparable item. Condemnation and disposal not authorized below specialized repair activity (SRA).
- A - Item requires special handling or condemnation procedures because of specific reasons (e.g., precious metal content, high dollar value, critical material, or hazardous material). Refer to appropriate manuals/directives for specific instructions.

c. CAGEC (Column (3)). The Commercial and Government Entity Code (CAGEC) is a 5-digit numeric code which is used to identify the manufacturer, distributor, or Government agency/activity that supplies the item.

d. PART NUMBER (Column (4)). Indicates the primary number used by the manufacturer, (individual, company, firm, corporation, or Government activity), which controls the design and characteristics of the item by means of its engineering drawings, specifications, standards, and inspection requirements to identify an item or range of items.

**NOTE**

When you use an NSN to requisition an item, the item you receive may have a different part number from the number listed.

e. DESCRIPTION AND USABLE ON CODE (UOC) (Column (5)). This column includes the following information:

- (1) The Federal item name and, when required, a minimum description to identify the item.
- (2) Part numbers of bulk materials are referenced in this column in the line entry to be manufactured/fabricated.

(3) The statement "END OF FIGURE" appears just below the last item description in Column (5) for a given figure in both Section II and Section III.

f. QTY (Column (6)). The QTY (quantity per figure) column indicates the quantity of the item used in the breakout shown on the illustration/figure, which is prepared for a functional group, subfunctional group, or an assembly. A "V" appearing in this column instead of a quantity indicates that the quantity is variable and may vary from application to application.

4. EXPLANATION OF INDEX FORMAT AND COLUMNS (SECTION IV).

- a. NATIONAL STOCK NUMBER (NSN) INDEX.

**TM9-2805-257-24P  
TO 38G2-103-4  
SL-4-03521B**

(1) STOCK NUMBER Column. This column lists the NSN in national item identification number (NIIN) sequence. The NIIN consists of the last nine digits of the NSN, i.e.

NSN  
5305-01-574-1467  
NIIN

When using this column to locate an item, ignore the first four digits of the NSN. Use the complete NSN (13 digits) when requisitioning items by stock number.

(2) FIG. Column. This column lists the number of the figure where the item is identified/located. The figures are in numerical order in Section II and Section III.

(3) ITEM Column. The item number identifies the item associated with the figure listed in the adjacent FIG. column. This item is also identified by the NSN listed on the same line.

b. PART NUMBER INDEX. Part numbers in this index are listed by part number in ascending alphanumeric sequence (i e., vertical arrangement of letter and number combination which places the first letter or digit of each group in order A through Z, followed by the numbers O through 9, and each following letter or digit in like order).

(1) CAGEC Column. The Commercial and Government Entity Code (CAGEC) is a 5-digit numeric code used to identify the manufacturer, distributor, or Government agency/activity that supplies the item.

(2) PART NUMBER Column. Indicates the primary number used by the manufacturer (individual, firm, corporation, or Government activity), which controls the design and characteristics of the item by means of its engineering drawings, specifications, standards, and inspection requirements to identify an item or range of items.

(3) STOCK NUMBER Column. This column lists the NSN for the associated part number and manufacturer identified in the PART NUMBER and CAGEC columns to the left.

(4) FIG. Column. This column lists the number of the figure where the item is identified/located in Section II and Section III.

(5) ITEM Column. The item number is that number assigned to the item as it appears in the figure referenced in adjacent figure number column.

c. FIGURE AND ITEM NUMBER INDEX.

(1) FIG. Column. This column lists the number of the figure where the item is identified/located in Section II and Section III.

(2) ITEM Column. The item number is that number assigned to the item as it appears in the figure referenced in the adjacent figure number column.

(3) STOCK NUMBER Column. This column lists the NSN for the item.

(4) CAGEC Column. The Commercial and Government Entity Code (CAGEC) is a 5-digit numeric code used to identify the manufacturer, distributor, or Government agency/activity that supplies the item.

(5) PART NUMBER Column. Indicates the primary number used by the manufacturer (individual, firm, corporation, or Government activity), which controls the design and characteristics of the item by means of its engineering drawings, specifications, standards, and inspection requirements to identify an item or range of items.

**TM9-2805-257-24P  
TO 38G2-103-4  
SL-4-03521B**

5. SPECIAL INFORMATION.

a. USABLE ON CODE. The usable on code appears in the lower left corner of the Description Column heading. Usable on codes are shown as "UOC:.." in the Description Column (justified left) on the last line of the applicable item description/nomenclature. Uncoded items are applicable to all models. Identification of the usable on codes used in this RPSTL are:

Code	Used On
A	Model 2A016-1
B	Model 2A016-2
C	Model 2A016-3
D	Model 2A016-4

b. FABRICATION INSTRUCTIONS. Bulk materials required to manufacture items are listed in the Bulk Material Functional Group of this RPSTL. Part numbers for bulk materials are also referenced in the description column of the line entry for the item to be manufactured/fabricated. Detailed fabrication instructions for items source coded to be manufactured or fabricated are found in TM9-2805-257-14.

c. INDEX NUMBERS. Items which have the word BULK in the figure column will have an index number shown in the item number column. This index number is a cross-reference between the National Stock Number/Part Number Index and the bulk material list in Section II.

d. ASSOCIATED PUBLICATIONS. The publications listed below pertain to the Engine, Gasoline, 3 hp Military Standard Models and its components.

<u>Publication</u>	<u>Short Title</u>
LO9-2805-257-12	Lubrication Order, Gasoline Engine, 3hp Military Standard Models.
TM9-2805-257-14	Operator, Unit, Direct Support and General Support Maintenance Manual.

6. HOW TO LOCATE REPAIR PARTS.

a. When National Stock Numbers or Part Numbers are NOT Known.

(1) First Using the table of contents, determine the assembly or subassembly group to which the item belongs. This is necessary since figures are prepared for assembly groups and subassembly groups, and listings are divided into the same groups.

(2) Second. Find the figure covering the assembly group or subassembly group to which the item belongs.

(3) Third. Identify the item on the figure and use the Figure and Item Number Index to find the NSN.

b. When National Stock Number or Part Number is Known.

(1) First, Using the of National Stock Number and Part Number Indexes find the pertinent National Stock Number or Part Number. The NSN index is in National Item Identification Number (NIIN) sequence (see paragraph 4.a.). The part numbers in the Part Number index are listed in ascending alphanumeric sequence (see paragraph 4.b.). Both indexes cross-reference you to the illustration/figure and item number of the item you are looking for.

(2) Second. Turn to the figure and item number, verify that the item is the one you are looking for, then locate the item number in the repair parts list for the figure.

7. ABBREVIATIONS. Abbreviations used in this manual are listed in MIL-STD-12.



SECTION II

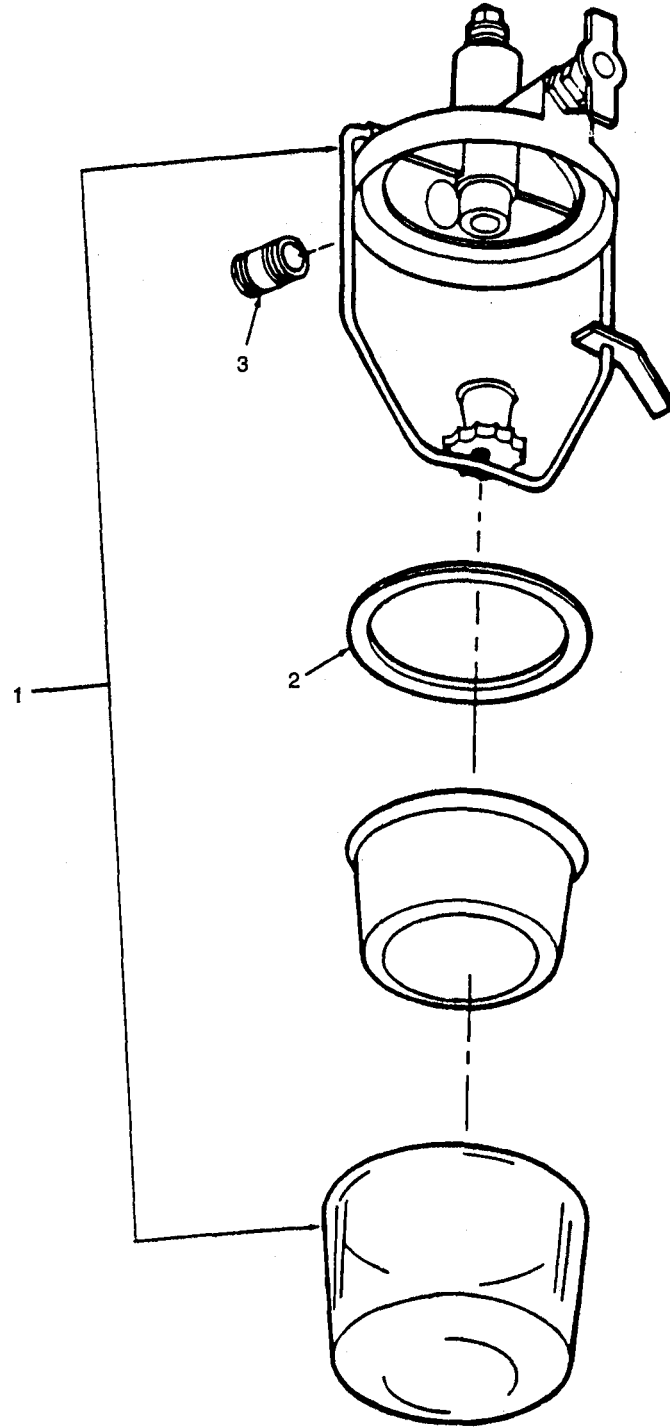


FIGURE 1. Fuel Filter Assembly

SECTION II										
(1)	(2)					(3)	(4)	(5)	(6)	(7)
ITEM NO.	SMR CODE	a.	b.	c.	d.	CAGEC	PART NUMBER	DESCRIPTION AND USABLE ON CODE	QTY	USMC QTY/ EQUIP
	ARMY	AIR FORCE	NAVY	USMC						
GROUP 01 FUEL FILTER ASSEMBLY										
FIG. 1 FUEL FILTER ASSEMBLY										
1	PAOZZ	PAOZZ			PAOZZ	96906	MS51086-1	FILTER ASSEMBLY: FUEL	1	
2	PAOZZ	PAOZZ			PAOZZ	96906	MS51091-4	GASKET: FUEL FILTER BOWL	1	
3	PAOZZ	PAOZZ			PAOZZ	44949	505-0104	NIPPLE, PIPE: FUEL FILTER TO FUEL PUMP, 1/58-22THD SIZE	1	
END OF FIGURE										

Section II

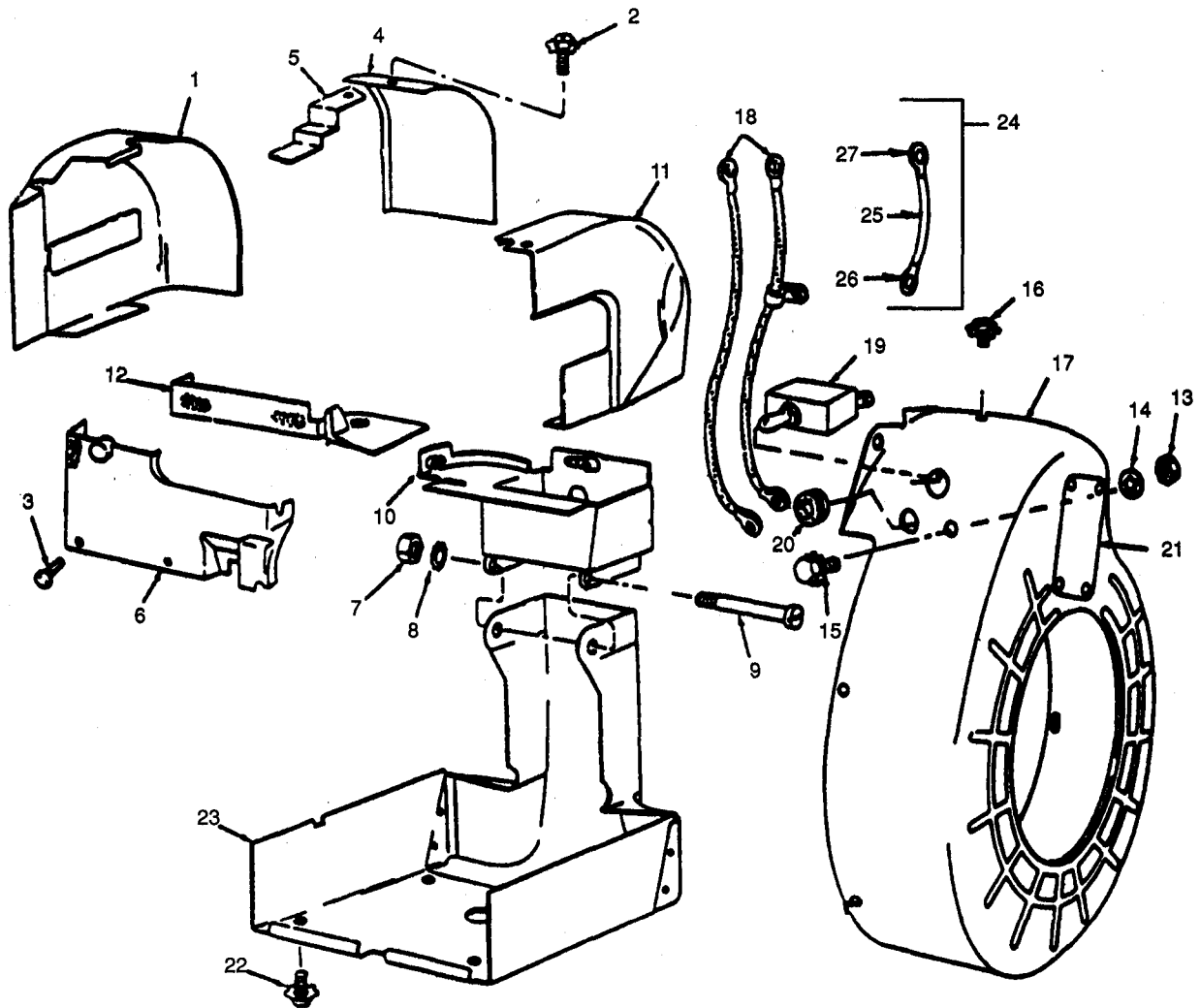


FIGURE 2. Flywheel and Cylinder Head Covers, Lower Air Duct, and Ignition Switch



SECTION II										
(1)	(2)			(3)	(4)	(5)	(6)	(7)		
ITEM NO.	SMR CODE	a.	b.	c.	d.	PART NUMBER	DESCRIPTION AND USABLE ON CODE	QTY	USMC QTY/EQUIP	
	ARMY	PAOZZ	AIR FORCE	NAVY	USMC					CAGEC
GROUP 02 COOLING ASSEMBLY										
FIG. 2 FLYWHEEL AND CYLINDER HEAD COVERS, LOWER AIR DUCT, AND IGNITION SWITCH										
1	PAOZZ	PAOZZ			PAOZZ	97403	9786E56		COVER, CYLINDER HEAD: PTO TO SIDE	1
2	PAOZZ	PAOZZ			PAOZZ	97403	13218E0504-67		SCREW ASSEMBLED WASHER: COVER MTG, CYLINDER HEAD,CENTER. 1/4-20 X 5/8 IN. LG	2
3	PAOZZ	PAOZZ			PAOZZ	97403	13218E0505-56		SCREW,ASSEMBLED WASHER: COVER MTG. CYLINDER HEAD, PTO SIDE NO. 10-32 X 9/16	6
4	PAOZZ	PAOZZ			PAOZZ	974031	9787E32		COVER,CYLINDER HEAD: CENTER	1
5	PAOZZ	PAOZZ			PAOZZ	97403	9787E26-2		COVER,CENTER MANIFOLD	1
6	PAOZZ	PAOZZ			PAOZZ	974031	9787E31		COVER,CYLINDER HEAD	1
7	PAOZZ	PAOZZ			PAOZZ	97403	MS51968-2		NUT, MACHINE, UPPER AIR DUCT, 1/4-28	1
8	PAOZZ	PAOZZ			PAOZZ	96906	MS35335-33		WASHER,LOCK: UPPER AIR DUCT MTG, 1/4	1
9	PAOZZ	PAOZZ			PAOZZ	97403	13218E0526-292		BOLT, MACHINE, UPPER AIR DUCT, 1/4-28 X 3-3/8 IN. LG	1
10	PAOZZ	PAOZZ			PAOZZ	974031	9787E34		DUCT, AIR: UPPER	1
11	PAOZZ	PAOZZ			PAOZZ	97403	9786E55		COVER, CYLINDER HEAD: FLYWHEEL SIDE	1
12	PAOZZ	PAOZZ			PAOZZ	974031	9787E29		COVER, CYLINDER HEAD	1
13	PAOZZ	PAOZZ			PAOZZ	97403	1318E0320-249		NUT, MACHINE: HEXAGON NO. 10-24	1
14	PAOZZ	PAOZZ			PAOZZ	97403	13218E0517-51		WASHER, LOCK	1
15	PAOZZ	PAOZZ			PAOZZ	97403	13218E0504-56		SCREW, ASSEMBLED WITH WASHER: LOW TENSION CABLE MTG NO. 12-24 X 9/16 IN. LG	1
16	PAOZZ	PAOZZ			PAOZZ	97403	13128E0504-53		SCREW, ASSEMBLED WITH WASHER; FLYWHEEL COVER MTG, 10-24 X 3/8 IN. LG	7
17	PAOZZ	PAOZZ			PAOZZ	97403	9787E24		COVER ASSEMBLY, FLYWHEEL	1
18	PAOZZ	PAOZZ			PAOZZ	97403	13206E1420		CABLE ASSEMBLY: LOW TENSION UOC: A,B,C	2
19	PAOZZ	PAOZZ			PAOZZ	96906	MS35058-22		SWITCH, ENGINE: CUTOFF UOC: C,D	1
20	PAOZZ	PAOZZ			PAOZZ	97403	9787E40-2		GROMMET, PANEL, HOLE	1
21	MDOZZ	MDOZZ			MDOZZ	97403	9786E53-1		NAMEPLATE	1

TM9-2805-257-24P  
 TO 38G2-103-4  
 SL-4-03521B

SECTION II									
(1)	(2)			(3)	(4)	(5)	(6)	(7)	
ITEM NO.	SMR CODE		c.	d.	CAGEC	PART NUMBER	DESCRIPTION AND USABLE ON CODE	QTY	USMC QTY/ EQUIP
	a.	b.							
	ARMY	AIR FORCE	NAVY	USMC					
22	PAOZZ	PAOZZ		PAOZZ	97403	13218E0549-34	SCREW, ASSEMBLED WITH WASHER, OIL PAN COVER MTG. 1/4-14 X 1/2 IN. LG	4	
23	PAOZZ	PAOZZ		PAOZZ	974031	9787E35	AIR DUCT ASSEMBLY, LOWER	1	
24	PAOZZ	PAOZZ		PAOZZ	97403	13226E0933	WIRE, SWITCH CONNECTOR	1	
25	PAOZZ	PAOZZ		PAOZZ	81349	M13486-1-2	CABLE, ELECTRIC #18 AWG UOC: D	1	
26	PAOZZ	PAOZZ		PAOZZ	96906	MS25036-101	TERMINAL, LUG UOC: D	1	
27	PAOZZ	PAOZZ		PAOZZ	96906	MS25036-149	TERMINAL LUG	1	



TM9-2505-257-24P  
TO 38G2-103-4  
SL-4-03521B

Section II

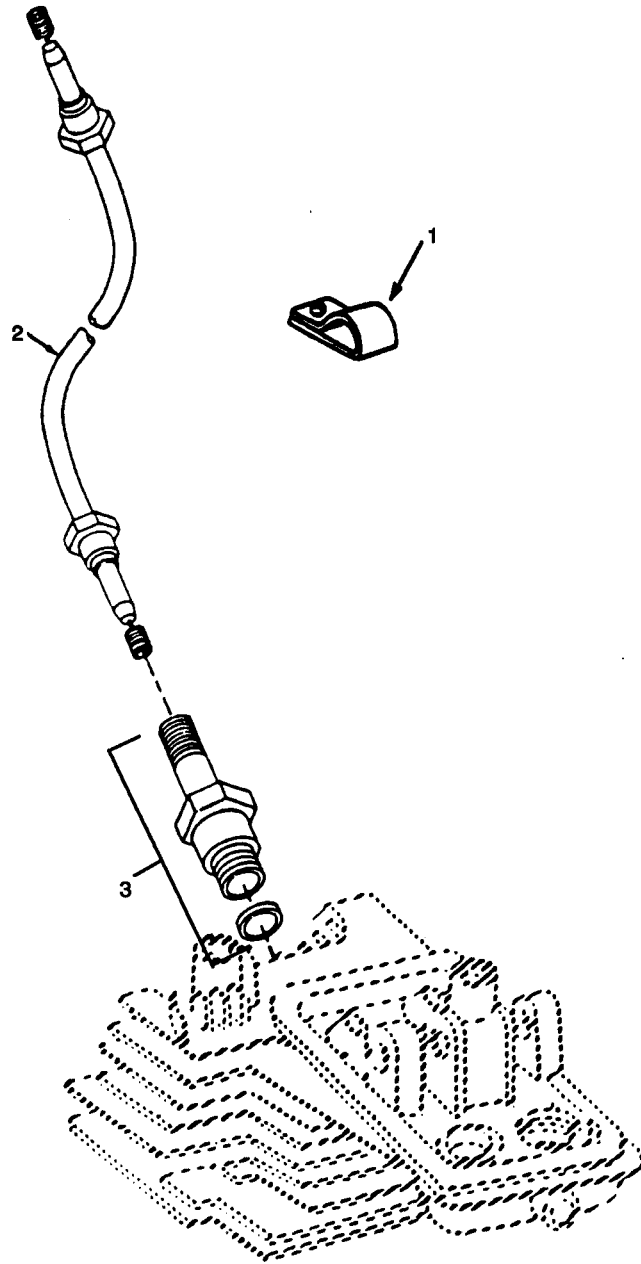


FIGURE 3. High Tension Cable Assembly

SECTION II										
(1)	(2)					(3)	(4)	(5)	(6)	(7)
ITEM NO.	SMR CODE		c.	d.	CAGEC	PART NUMBER	DESCRIPTION AND USABLE ON CODE	QTY	USMC QTY/EQUIP	
	a.	b.								
	ARMY	AIR FORCE	NAVY	USMC						
GROUP 03 HIGH TENSION CABLES AND SPARK PLUGS										
FIG. 3 HIGH TENSION CABLE ASSEMBLY										
1	PAOZZ	PAOZZ		PAOZZ	969061	MS21334-9	CLAMP, LOOP: CABLE ASSEMBLY	1		
2	PAOZZ	PAOZZ		PAOZZ	97403	13227E9891-8	CABLE ASSEMBLY, HIGH TENSION UOC: A,B,C	2		
2	PAOZZ	PAOZZ		PAOZZ	97403	13227E9891-4	CABLE ASSEMBLY, HIGH TENSION UOC: D	2		
3	PAOZZ	PAOZZ		PAOZZ	969062	MS5109-1	SPARK PLUG	2		
END OF FIGURE										

Section II

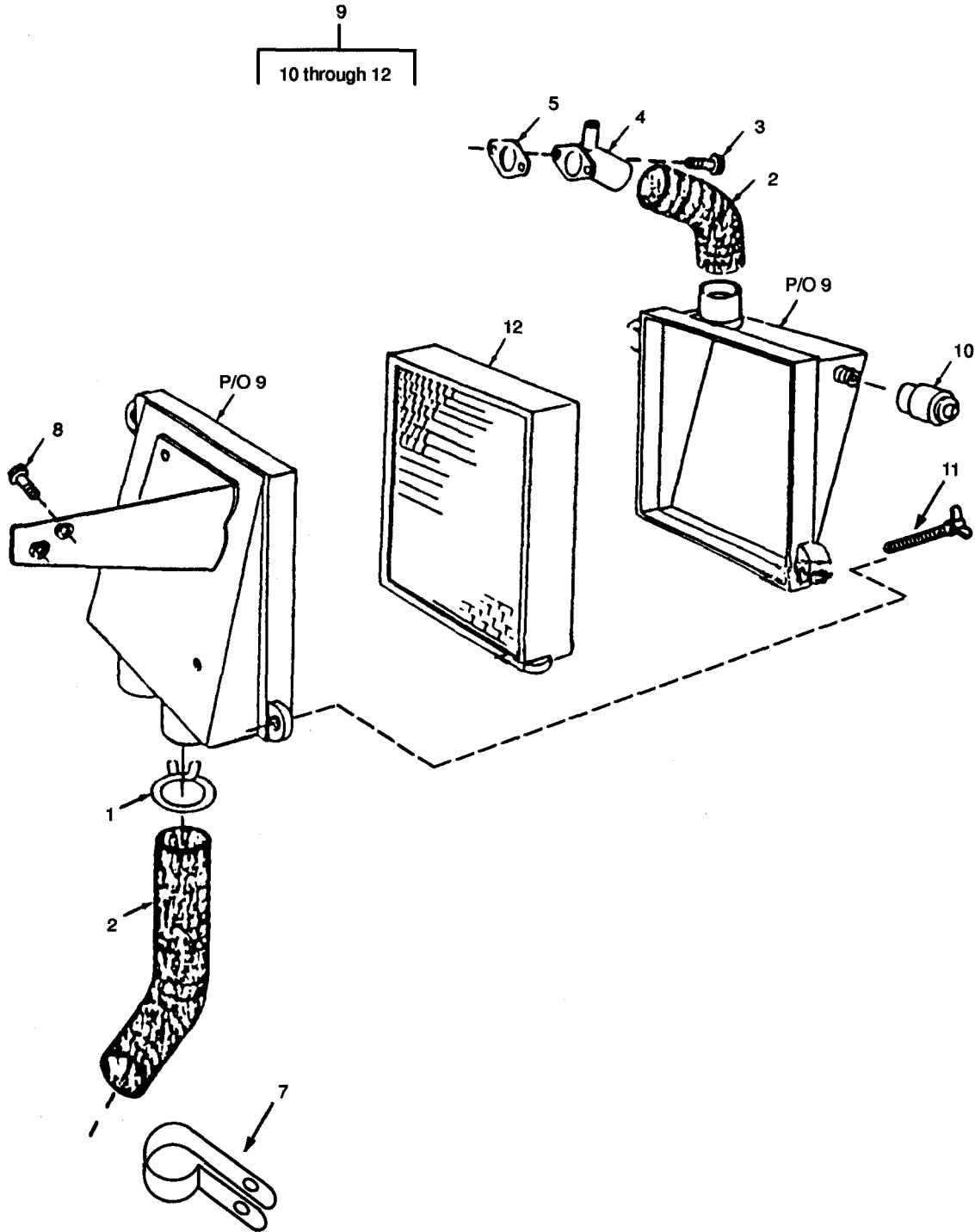


FIGURE 4. Air Cleaner and Components

SECTION II									
(1)	(2)			(3)	(4)	(5)	(6)	(7)	
ITEM NO.	SMR CODE		c.	d.	CAGEC	PART NUMBER	DESCRIPTION AND USABLE ON CODE	QTY	USMC QTY/EQUIP
	a.	b.							
	ARMY	AIR FORCE	NAVY	USMC					
GROUP 04 AIR CLEANER ASSEMBLY									
FIG. 4 AIR CLEANER AND COMPONENTS									
1	PAOZZ	PAOZZ		PAOZZ	97403	13218E0250-43	CLAMP ASSEMBLY: DUCT	3	
2	KFOZZ	KFOZZ		KFOZZ	97403	13214E9389-2	DUCT, AIR CLEANER (PART OF KIT, P/N 13214E8187)	1	
3	PAOZZ	PAOZZ		PAOZZ	97403	13218E0504-67	SCREW, ASSEMBLED WITH WASHER: ELBOW TO CARBU RETOR 1/4-20 X 5/8 IN. LG	2	
4	PAOZZ	PAOZZ		PAOZZ	97403	13214E7052	ELBOW, DUCT TO CARBURETOR	1	
5	PAOZZ	PAOZZ		PAOZZ	97403	9786E26-2	GASKET, CARBURETOR MGT: AIR CLEANER ELBOW TO CARBURETOR (PART OF KIT P/N 13214E8187)	1	
6	KFOZZ	KFOZZ		KFOZZ	97403	13214E9389-3	DUCT, AIR CLEANER (PART OF KIT P/N 13214E8187)	1	
7	PAOZZ	PAOZZ		PAOZZ	96906	MS21333-78	CLAMP, LOOP	1	
8	PAOZZ	PAOZZ		PAOZZ	97403	13218E05047-67	SCREW, ASSEMBLED WITH WASHER: AIR CLEANER MTG.	2	
9	PAOZZ	PAOZZ		PAOZZ	97403	13215E3827	AIR CLEANER ASSEMBLY	1	
10	PAOZZ	PAOZZ		PAOZZ	13206E0	INDICATOR, RESTRICT	1		
11	PAOZZ	PAOZZ		PAOZZ	97403	13206E0248	THUMBSCREW, AIR FILTER	1	
12	PAOZZ	PAOZZ		PAOZZ	97403	132148449	ELEMENT, AIR CLEANER	1	
	PAOZZ	PAOZZ		PAOZZ	97403	13214E8187	KIT, AIR DUCT, AIR CLEANER	V	
DUCT(1)4-2									
DUCT(1)4-6									
END OF FIGURE									

TM9-2805-257-24P

TO 38G2-103-4

SL-4-03521B

Section II

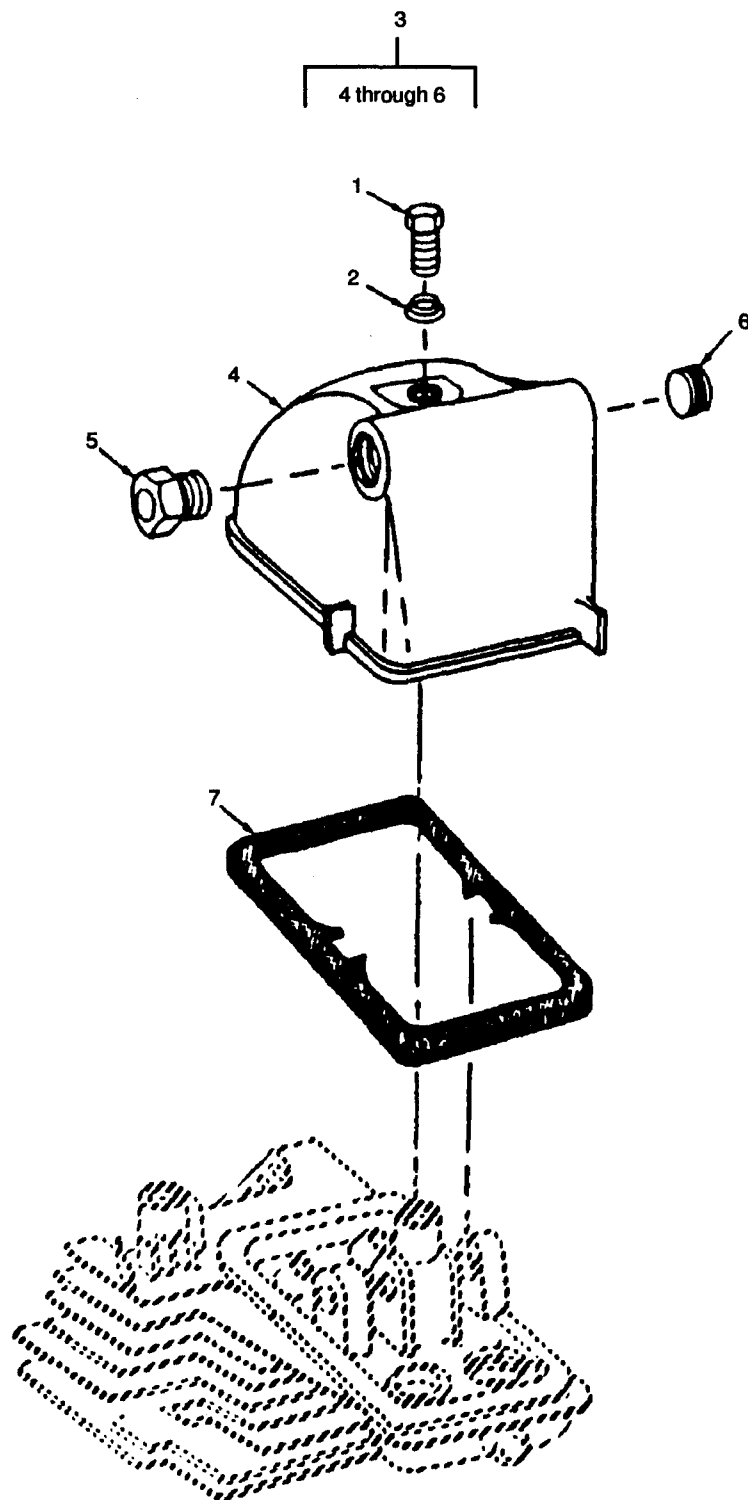


FIGURE 5. Relief Valve and Rocker Cover



SECTION II									
(1)	(2)			(3)	(4)	(5)	(6)	(7)	
ITEM NO.	SMR CODE		c.	d.	CAGEC	PART NUMBER	DESCRIPTION AND USABLE ON CODE	QTY	USMC QTY/ EQUIP
	a.	b.							
	ARMY	AIR FORCE	NAVY	USMC					
							GROUP 05 ROCKER ARM COVER ASSEMBLY		
							FIG. 5 RELIEF VALVE AND ROCKER COVER		
1	PAOZZ	PAOZZ		PAOZZ	97403	13218E0526-109	SCREW, MACHINE, ROCKER COVER MTG	2	
2	PAOZZ	PAOZZ		PAOZZ	97403	13215E3857-10	WASHER, ROLLED UOC: C,D	2	
3	PAOZZ	PAOZZ		PAOZZ	97403	9786E44	COVER, ROCKER BOX ASSEMBLY	2	
4	XAOZZ	XAOZZ		XAOZZ	97403	9786E45	COVER, ROCKER BOX	2	
5	PAOZZ	PAOZZ		PAOZZ	97403	9786E46	VALVE, RELIEF	2	
6	PAOZZ	PAOZZ		PAOZZ	96906	MS27769-2	PLUG, PIPE	2	
7	PAOZZ	PAOZZ		PAOZZ	97403	9786E44-2	GASKET: ROCKER COVER MTG (PART OF KIT, P/N 13214E8686)	2	
							END OF FIGURE		

TM9-2805-257-24P  
TO 38G2-103-4  
SL-4-03521B

Section II

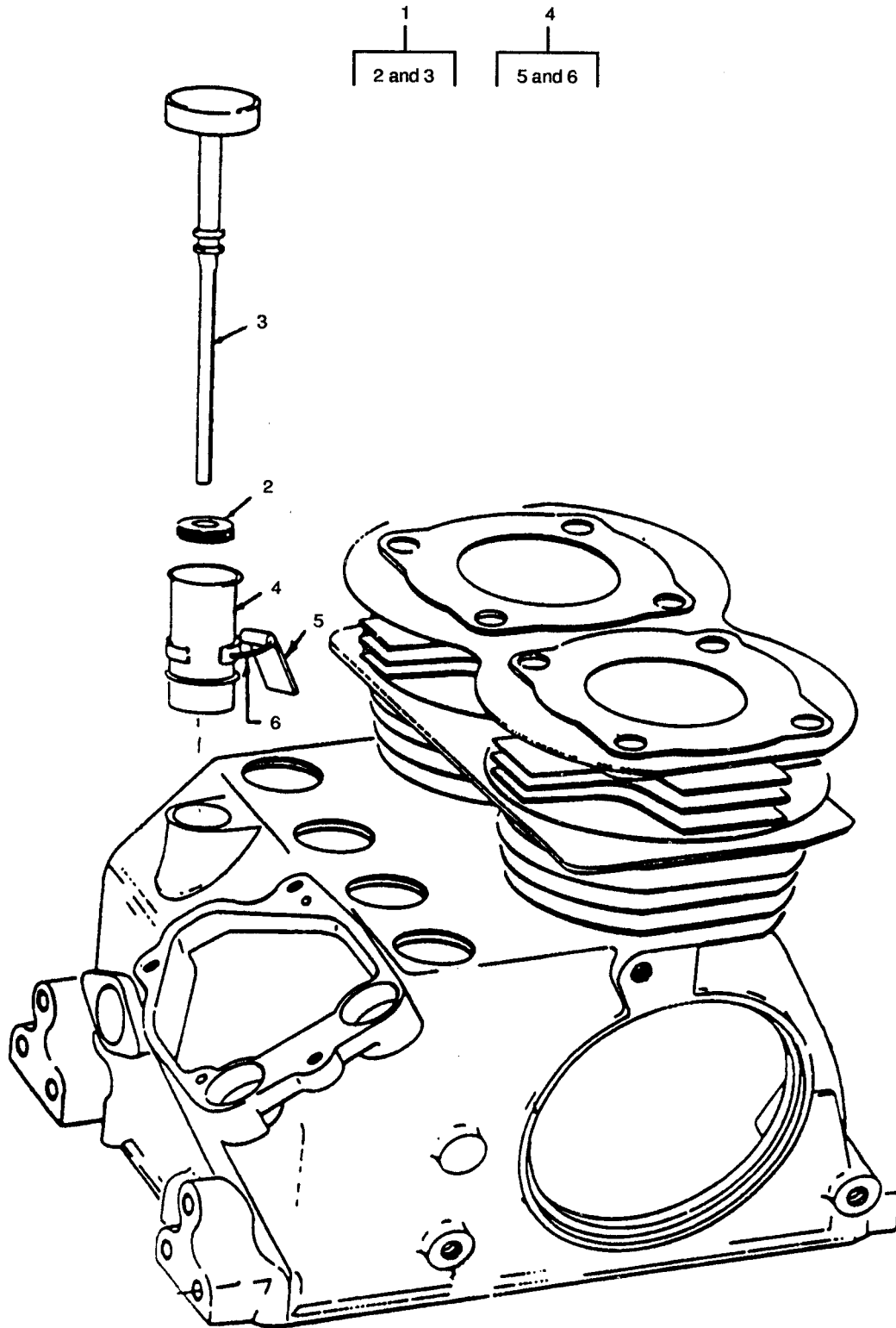


FIGURE 6. Oil Fill Tube and Gage

SECTION II										
(1)	(2)					(3)	(4)	(5)	(6)	(7)
ITEM NO.	SMR CODE		c.	d.	CAGEC	PART NUMBER	DESCRIPTION AND USABLE ON CODE	QTY	USMC QTY/ EQUIP	
	a.	b.								
	ARMY	AIR FORCE	NAVY	USMC						
GROUP 06 OIL FILL TUBE AND GAGE ASSEMBLY										
FIG. 6 OIL FILL TUBE AND GAGE										
1	PAOZZ	PAOZZ		PAOZZ	97403	9786E114	ROD ASSEMBLY, OIL GAGE	1		
2	PAOZZ	PAOZZ		PAOZZ	96906	MS29561-019	GASKET, OIL GAGE ROD ASSEMBLY			
3	XAOZZ	XAOZZ		XAOZZ	97403	9786E114-2	ROD, OIL FILL GAGE	1		
4	PAOZZ	PAOZZ		PAOZZ	974031	9786E17A	TUBE ASSEMBLY: OIL FILL	1		
5	XAFZZ	XAFZZ		XAFZZ	97403	9786E17-1	CAM. LOCKING	1		
6	XAFZZ	XAFZZ		XAFZZ	97403	9786E17-2	BALE, LOCKING CAM	1		
END OF FIGURE										

TM9-2805-257-24P  
TO 38G2-103-4  
SL-4-03521B

Section II

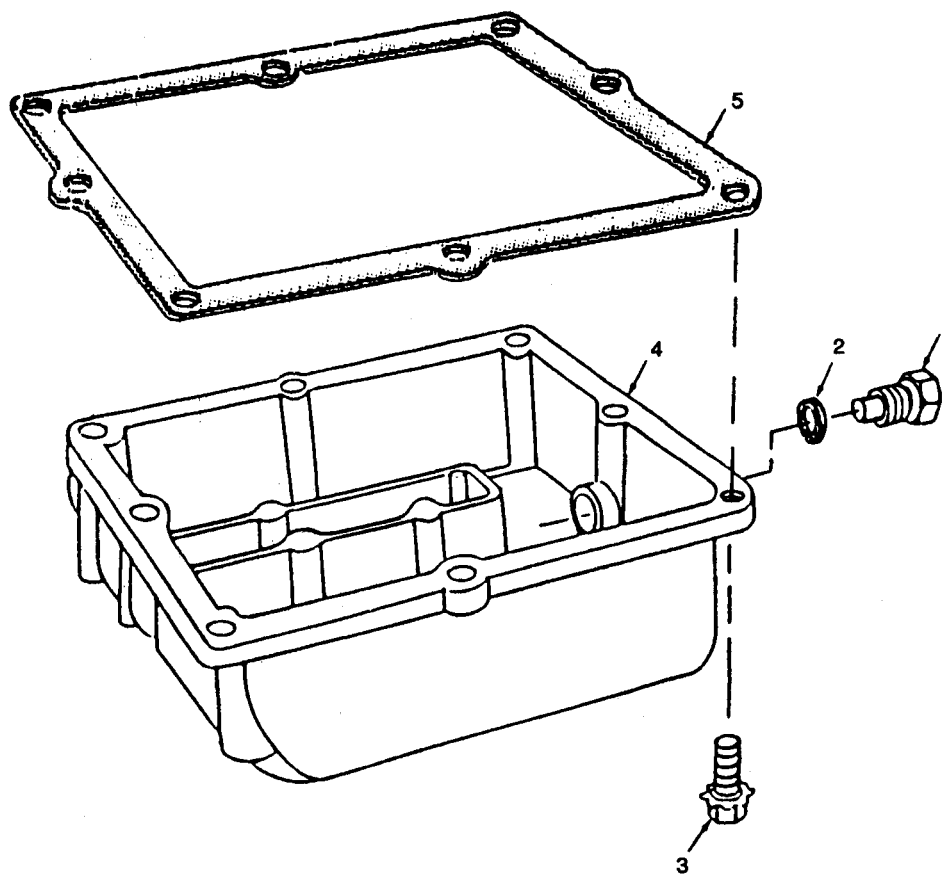


FIGURE 7. Oil Pan

SECTION II										
(1)	(2)					(3)	(4)	(5)	(6)	(7)
ITEM NO.	SMR CODE		c.	d.	CAGEC	PART NUMBER	DESCRIPTION AND USABLE ON CODE	QTY	USMC QTY/ EQUIP	
	a.	b.								
	ARMY	AIR FORCE	NAVY	USMC						
GROUP 07 OIL PAN ASSEMBLY										
FIG. 7 OIL PAN										
1	PAOZZ	PAOZZ		PAOZZ	97403	13214E9570	PLUG, MAGNETIC: OIL PAN DRAIN	2		
2	PAOZZ	PAOZZ		PAOZZ	97403	13215E3857-14	WASHER, ROLLED	2		
3	PAFZZ	PAFZZ		PAFZZ	97403	13218E0504-56	SCREW, ASSEMBLED WITH WASHER: OIL PAN MTG	12		
4	PAFZZ	PAFZZ		PAFZZ	97403	9787E44	PAN ASSEMBLY, OIL	1		
5	PAFZZ	PAFZZ		PAFZZ	97403	9787E46	GASKET, OIL PAN (PART OF KIT, P/N 13214E8186)	1		
END OF FIGURE										

Section II

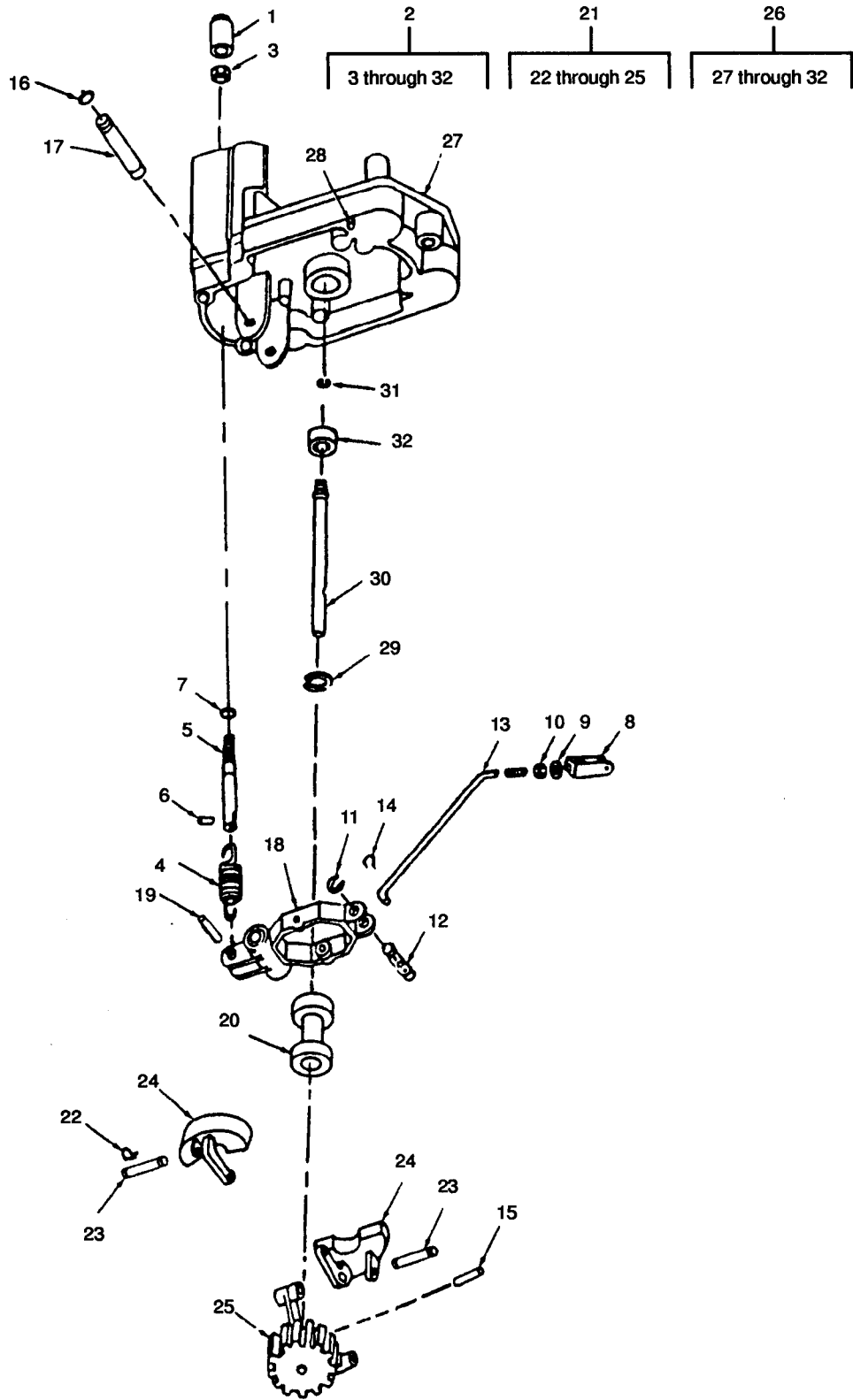


FIGURE 8. Engine Speed Governor Assembly (with Steel Gear)

SECTION II										
(1)	(2)					(3)	(4)	(5)	(6)	(7)
ITEM NO.	SMR CODE	a.	b.	c.	d.	CAGEC	PART NUMBER	DESCRIPTION AND USABLE ON CODE	QTY	USMC QTY/EQUIP
	ARMY	AIR FORCE	NAVY	USMC						
								GROUP 08 ENGINE SPEED GOVERNOR AND CONTROLS		
								FIG. 8 ENGINE SPEED GOVERNOR ASSEMBLY (WITH STEEL GEAR)		
1	PAOZZ	PAOZZ			PAOZZ	97403	9786E65-5	CAP, PROTECTIVE: GOVERNOR ADJUSTING SCREW	1	
2	KFFZZ	KFFZZ			KFFZZ	97403	13214E7056	GOVERNOR ASSEMBLY: STEEL GEAR TYPE (PART OF KIT, P/N 13214E8217) UOC: A,B,C	1	
3	PAOZZ	PAOZZ			PAOZZ	96906	MS21042-5	NUT, SELF-LOCKING: 5/16-24 THD SIZE	1	
4	PAFZZ	PAFZZ			PAFZZ	97403	9786E75-3	MAIN SPRING, GOVERNOR: YOKE TO ROD	1	
5	PAFZZ	PAFZZ			PAFZZ	97403	9786E76A	ROD, SPRING CONTROL: ENGINE SPEED GOVERNOR	1	
6	PAFZZ	PAFZZ			PAFZZ	96906	MS16562-2850	PIN, SPRING	1	
7	PAOZZ	PAOZZ			PAOZZ	96906	MS29561-009	PACKING PREFORMED: SPRING CONTROL ROD	1	
8	PAOZZ	PAOZZ			PAOZZ	97403	9786E64A2	CLEVIS, THROTTLE CONTROL	1	
9	PAOZZ	PAOZZ			PAOZZ	97403	13218E0519-32	WASHER, LOCKSPRING: THROTTLE ROD	1	
10	PAOZZ	PAOZZ			PAOZZ	96906	MS35469-32	NUT, PLAIN: THROTTLE ROD	1	
11	PAFZZ	PAFZZ			PAFZZ	96906	MS16624-1025	RING, RETAINING SHAFT: EXTERNAL	2	
12	XDFZZ	XFZZ			XDFZZ	97403	9786E75-1	SWIVEL, GOVERNOR	1	
13	PAFZZ	PAFZZ			PAFZZ	97403	9786E64-3	ROD, GOVERNOR CONTROL	1	
14	PAFZZ	PAFZZ			PAFZZ	97403	9786E75-4	SPRING, GOVERNOR ROD RETAINING	1	
15	PAFZZ	PAFZZ			PAFZZ	96906	MS171525-0	PIN SPRING, RETAINING: CARRIER AND GEAR FLY-WEIGHT	1	
16	PAFZZ	PAFZZ			PAFZZ	96906	MS16633-1018	RING, RETAINING: SHAFT AND YOKE AXLE	2	
17	XAFZZ	XAFZZ			XAFZZ	97403	9786E75-2	AXLE, YOKE: ENGINE SPEED GOVERNOR	1	
18	PAFZZ	PAFZZ			PAFZZ	97403	9786E81	SPRING AND CABLE YOKE ASSEMBLY (STEEL TYPE)	1	
19	PAFZZ	PAFZZ			PAFZZ	96906	MS16562-40	PIN, SPRING-TUBULAR, RETAINING: SPRING AND CABLE YOKE	1	
20	PAFZZ	PAFZZ			PAFZZ	97403	9786E76A2	RISER, BUSHING AND BEARING ASSEMBLY (STEEL TYPE)	1	

SECTION II									
(1)	(2)			(3)	(4)	(5)	(6)	(7)	
ITEM NO.	SMR CODE		c.	d.	CAGEC	PART NUMBER	DESCRIPTION AND USABLE ON CODE	QTY	USMC QTY/EQUIP
	a.	b.							
21	PAFZZ	PAFZZ		PAFZZ	97403	9786E83	FLYWEIGHT AND CARRIER ASSEMBLY: STEEL TYPE GEARS	1	
22	PAFZZ	PAFZZ		PAFZZ	97403	13214E9385	CLIP,RETAINING: AXLE TO FLYWEIGHT,3/32 DIA	4	
23	XAFZZ	XAFZZ		XAFZZ	97403	9786E83-2	AXLE,FLYWEIGHT,GOVERNOR	2	
24	XAFZZ	XAFZZ		XAFZZ	97403	9786E84	FLYWEIGHT ASSEMBLY: STEEL TYPE	1	
25	XAFZZ	XAFZZ		XAFZZ	97403	9786E83-3	CARRIER AND GEAR FLYWEIGHT: STEEL TYPE	1	
26	XAFZZ	XAFZZ		XAFZZ	97403	13226E1650	SHAFT AND ACCESSORY CAP ASSEMBLY UOC: A,B,C	1	
26	XAFZZ	XAFZZ		XAFZZ	97403	13226E1650	SHAFT AND ACCESSORY CAP ASSEMBLY BREAKERLESS IGNITIONS ONLY UOC: D	1	
27	XAFZZ	XAFZZ		XAFZZ	97403	13226E1648	CAP,ACCESSORY HOUSING	1	
28	PAFZZ	PAFZZ		PAFZZ	96906	MS16555-329	PIN,HEADLESS DOWEL: 1/8 IN. DIA. X 3/4 IN. LG	2	
29	PAFZZ	PAFZZ		PAFZZ	96906	MS16625-3062	RING,RETAINING INTERNAL	1	
30	XAFZZ	XAFZZ		XAFZZ	97403	13226E1647	SHAFT,ACCESSORY	1	
31	PAFZZ	PAFZZ		PAFZZ	96906	MS16624-3025	RING,RETAINING,EXTERNAL	1	
32	PAFZZ	PAFZZ		PAFZZ	97403	13206E1442	BEARING,BALL: SINGLE ROW	1	
	PAOZZ	PAOZZ		PAOZZ	97403	13214E8217	KIT,GOVERNOR REPLACEMENT GROMMET (2) 2-20 NUT (1) 8-3 SPRING (1) 8-4 ROD (1) 8-5 PACKING (1) 8-7 CLEVIS (1) 8-8 WASHER (1) 8-9 NUT (1) 8-10 RING (3) 8-11 SWIVEL (1) 8-12 ROD (1) 8-13 SPRING (1) 8-14 PIN (1) 8-15 RING (2) 8-16 AXLE (1) 8-17 SPRING (1) 8-18 RISER (1) 8-20 FLYWEIGHT (1) 8-21 PIN (2) 8-28  END OF FIGURE	V	





TM9-2805-257-24P

TO 38G2-103-4

SL-4-03521B

Section II

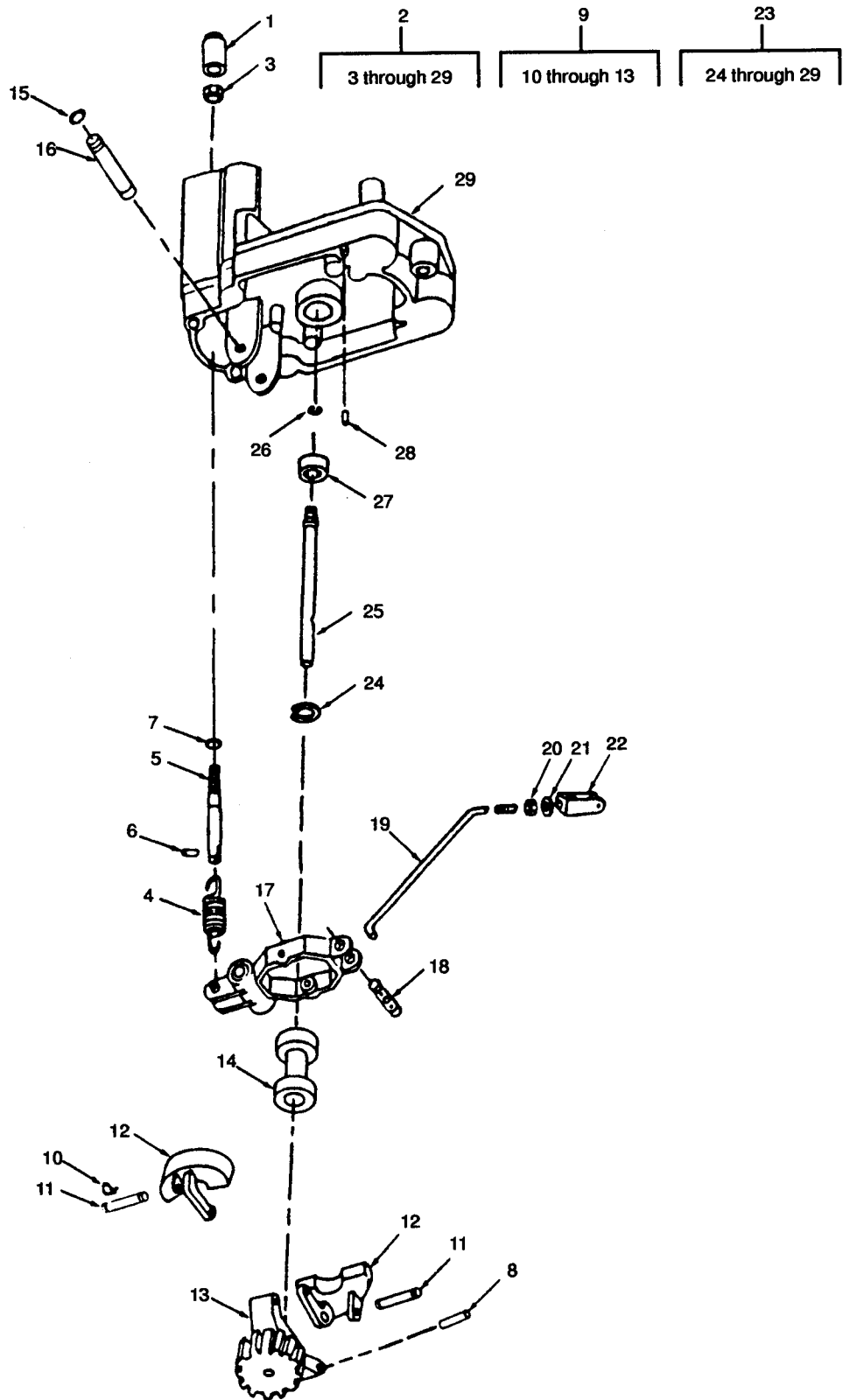


FIGURE 9. Engine Speed Governor Assembly (with Plastic Gear)

SECTION II									
(1)	(2)			(3)	(4)	(5)	(6)	(7)	
ITEM NO.	SMR CODE	a.	b.	c.	d.	PART NUMBER	DESCRIPTION AND USABLE ON CODE	QTY	USMC QTY/EQUIP
	ARMY	AIR FORCE	NAVY	USMC	CAGEC				
							GROUP 08 ENGINE SPEED GOVERNOR AND CONTROLS		
							FIG.9 ENGINE SPEED GOVERNOR (WITH PLASTIC GEAR)		
1	PAOZZ	PAOZZ			PAOZZ	97403 9786E65-5	CAP,PROTECTIVE:GOVERNOR ADJUSTING SCREW	1	
2	PAFFF	PAFFF			PAFFF	97403 13227E9686	GOVERNOR ASSEMBLY,PLASTIC (USE FOR ENGINES WITH BREAKERLESS IGNITION SYSTEMS ONLY) UOC: D	1	
3	PAOZZ	PAOZZ			PAFZZ	96906 MS21042-5	NUT,SELF-LOCKING:5/16-24 THD SIZE	1	
4	PAFZZ	PAFZZ			PAFZZ	97403 13226E8007	MAIN SPRING,YOKE TO ROD	1	
5	PAFZZ	PAFZZ			PAFZZ	97403 9786E76A	ROD,SPRING CONTROL	1	
6	PAFZZ	PAFZZ			PAFZZ	96906 MS16562-28	PIN,SPRING	1	
7	PAOZZ	PAOZZ			PAOZZ	96906 MS29561-009	PACKING,PREFORMED	1	
8	PAFZZ	PAFZZ			PAFZZ	96906 MS171525	PIN,SPRING:CARRIER ASSEMBLY MTG	1	
9	PAFZZ	PAFZZ			PAFZZ	97403 13226E8008	FLYWEIGHT AND CARRIER ASSEMBLY,PLASTIC TYPE	1	
10	PAFZZ	PAFZZ			PAFZZ	97403 MS16633-3012	RING,RETAINING	4	
11	XAFZZ	XAFZZ			XAFZZ	97403 9786E83-2	AXLE,FLYWEIGHT	2	
12	XAFZZ	XAFZZ			XAFZZ	97403 13226E8009	FLYWEIGHT ASSEMBLY	2	
13	XAFZZ	XAFZZ			XAFZZ	97403 13226E8014	CARRIER AND GEAR,PLASTIC TYPE	1	
14	PAFZZ	PAFZZ			PAFZZ	97403 13226E8011	RISER,BUSHING AND BEARING,PLASTIC TYPE	1	
15	PAFZZ	PAFZZ			PAFZZ	96906 MS16633-1018	RING,RETAINING	1	
16	XBFZZ	XBFZZ			XBFZZ	97403 9786E75-2	AXLE,YOKE	1	
17	PAFZZ	PAFZZ			PAFZZ	97403 13226E8006	SPRING AND CABLE YOKE ASSEMBLY	1	
18	PAFZZ	PAFZZ			PAFZZ	97403 13226E8015	SWIVEL,GOVERNOR	1	
19	PAFZZ	PAFZZ			PAFZZ	97403 9786E64-3	ROD,GOVERNOR CONTROL	1	
20	PAOZZ	PAOZZ			PAOZZ	96906 MS35469-242	NUT,HEX	1	
21	PAOZZ	PAOZZ			PAOZZ	97403 13218E0519-32	WASHER,LOCK	1	
22	PAOZZ	PAOZZ			PAOZZ	97403 9786E64A2	CLEVIS,THROTTLE CONTROL	1	

SECTION II										
(1)	(2)					(3)	(4)	(5)	(6)	(7)
ITEM NO.	SMR CODE		c.	d.	CAGEC	PART NUMBER	DESCRIPTION AND USABLE ON CODE	QTY	USMC QTY/ EQUIP	
	a.	b.								
	ARMY	AIR FORCE	NAVY	USMC						
23	XAFZZ	XAFZZ		XAFZZ	97403	13226E1650	SHAFT AND ACCESSORY CAP ASSEMBLY BREAKER- LESS IGNITION ONLY UOC:D	1		
24	XAFZZ	XAFZZ		XAFZZ	96906	MS16625-3062	RING,RETAINING INTERNAL	1		
25	XAFZZ	XAFZZ		XAFZZ	97403	13226E1647	SHAFT,ACCESSORY	1		
26	XAFZZ	XAFZZ		XAFZZ	96906	MS16624-3025	RING,RETAINING:EXTERNAL	1		
27	PAFZZ	PAFZZ		PAFZZ	97403	13206E1442	BEARING BALL:SINGLE ROW	1		
28	PAFZZ	PAFZZ		PAFZZ	96906	MS16555-329	PIN,HEADLESS DOWEL:1/8 IN.DIA..X3/4IN.LG	2		
29	XAFZZ	XAFZZ		XAFZZ	97403	13226E1648	CAP,ACCESSORY HOUSING	2		



Section II

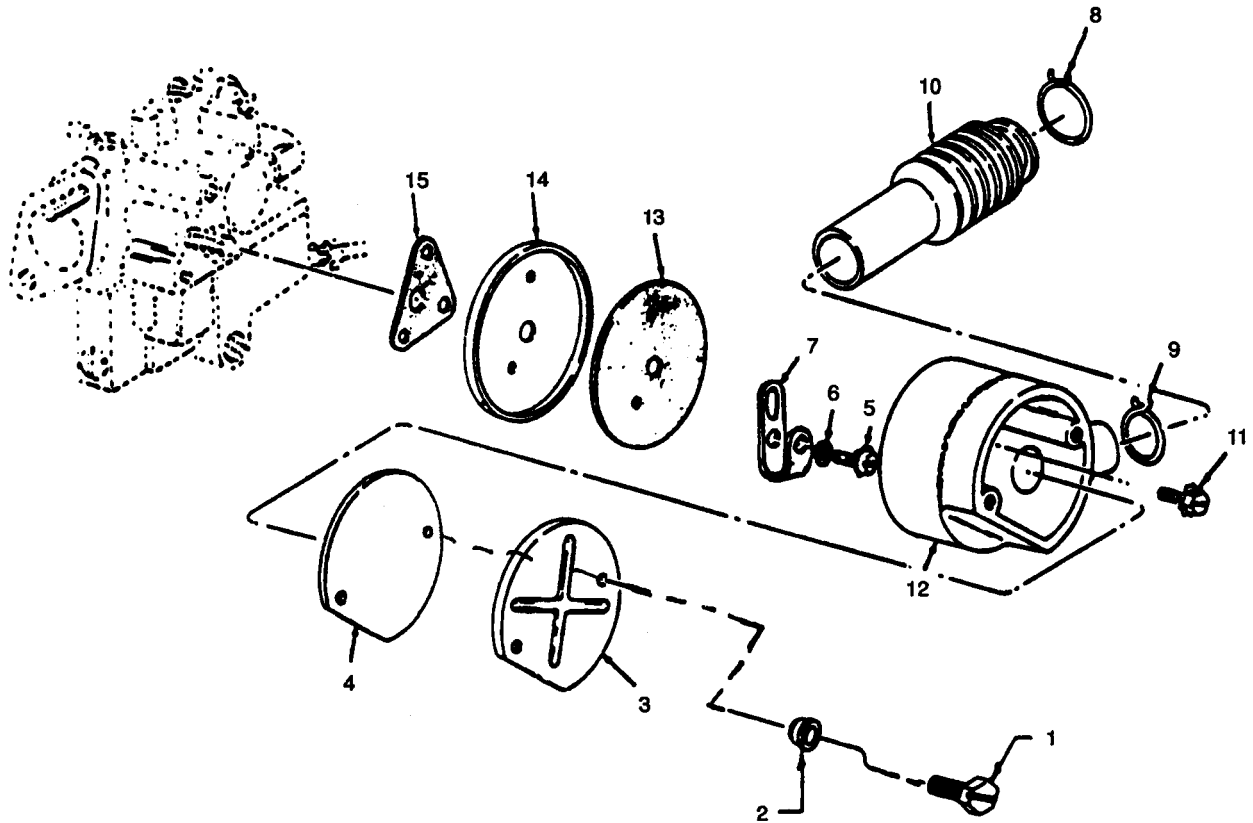


FIGURE 10. Governor Control Housing

TM9-2805-257-24P  
 TO 38G2-103-4  
 SL-4-03521B

(1) ITEM NO.	(2) SMR CODE a.      b. ARMY    AIR FORCE		c. NAVY	d. USMC	(3) CAGEC	(4) PART NUMBER	(5) DESCRIPTION AND USABLE ON CODE	(6) QTY	(7) USMC QTY/ EQUIP
							GROUP 08 ENGINE SPEED GOVERNOR AND CONTROLS		
							FIG. 10 GOVERNOR CONTROL HOUSING		
1	PAOZZ	PAOZZ		PAOZZ	96906	MS51849-33	SCREW,MACHINE	1	
2	PAOZZ	PAOZZ		PAOZZ	97403	13215E3859-6	WASHER,ROLLED	1	
3	PAOZZ	PAOZZ		PAOZZ	97403	9786E63-2	COVER,THROTTLE HOUSING:FRONT	1	
4	PAOZZ	PAOZZ		PAOZZ	97403	9786E64-6	GASKET,THROTTLE HOUSING:FRONT (PART OF KIT,P/N 13214E8186)	1	
5	PAOZZ	PAOZZ		PAOZZ	97403	13215E3832	SCREW:THROTTLE LEVER TO CARBURETOR	1	
6	PAOZZ	PAOZZ		PAOZZ	97403	13218E0519-3	WASHER,LOCK,THROTTLE LEVER MTG	1	
7	PAOZZ	PAOZZ		PAOZZ	97403	13214E7066	LEVER,THROTTLE CONTROL	1	
8	KFOZZ	KFOZZ		KFOZZ	97403	13215E3836	SPRING,RETAINING:GOVERNOR ROD HOUSING (PART OF KIT,P/N 13214E8189)	1	
9	KFOZZ	KFOZZ		KFOZZ	97403	13215E3835	SPRING,RETAINING:GOVERNOR ROD HOUSING (PART OF KIT,P/N 13214E8189)	1	
10	KFOZZ	KFOZZ		KFOZZ	97403	9786E64-1	HOUSING,GOVERNOR CONTROL ROD (PART OF KIT,P/N 13214E8189)	1	
11	PAOZZ	PAOZZ		PAOZZ	97403	13218E0504-67	SCREW AND WASHER,ASSEMBLED THROTTLE HOUSING MTG	1	
12	XBOZZ	XBOZZ		XBOZZ	97403	9786E63-1	HOUSING,THROTTLE CONTROL	1	
13	KFOZZ	KFOZZ		KFOZZ	97403	9786E65-3	GASKET,THROTTLE HOUSING:REAR (PART OF KIT,P/N 13214E8186)	1	
14	XBOZZ	XBOZZ		XBOZZ	97403	9786E64-2	COVER,THROTTLE HOUSING:REAR	1	
15	PAOZZ	PAOZZ		PAOZZ	97403	9786E65-4	GASKET,THROTTLE HOUSING TO CARBURETOR (PART OF KIT,P/N 13214E8186)	1	
	PAOZZ	PAOZZ		PAOZZ	97403	13214E8189	KIT,GOVERNOR ROD HOUSING SPRING (1) 10-8 SPRING (1) 10-9 HOUSING (1) 10-10	V	
							END OF FIGURE		

TM9-2805-257-24P  
TO 38G2-103-4  
SL-4-03521B

Section II

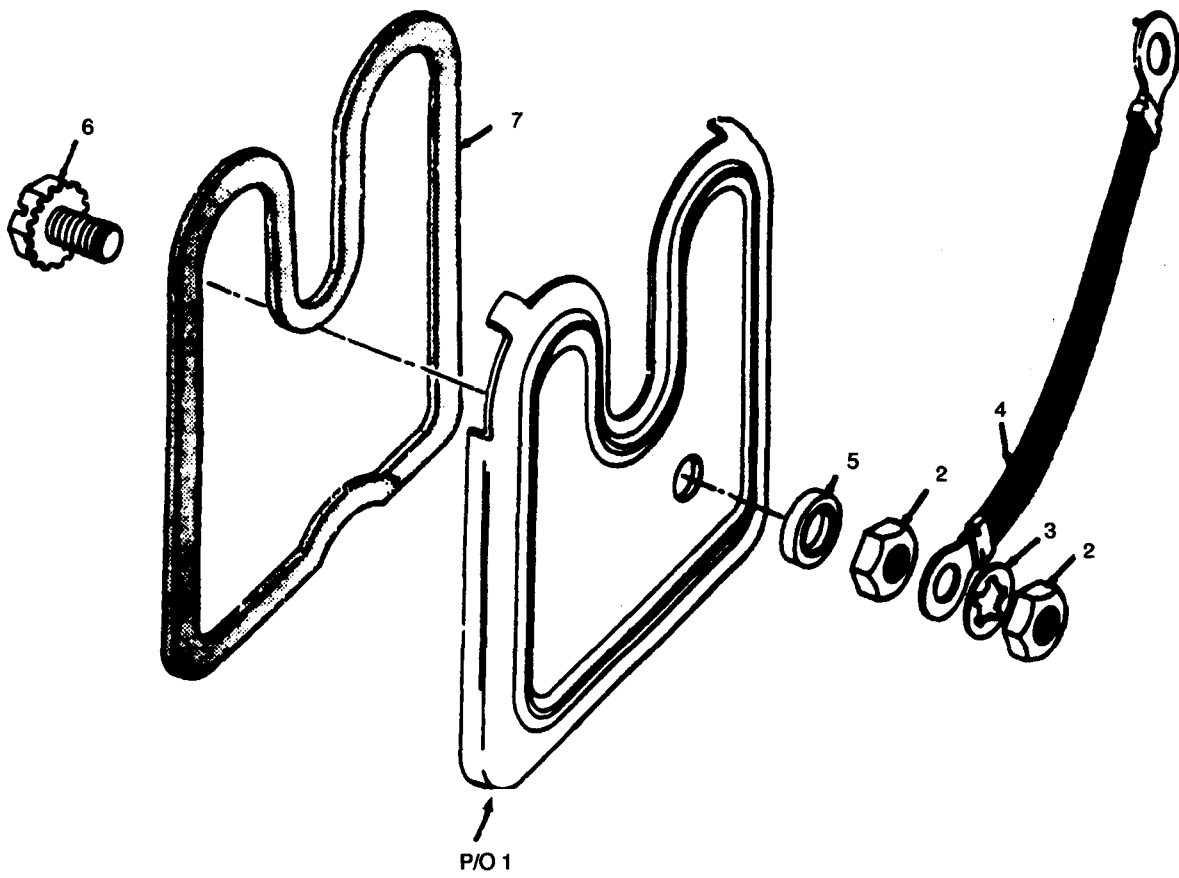


FIGURE 11. Contact and Governor Cover



SECTION II									
(1)	(2)			(3)	(4)	(5)	(6)	(7)	
ITEM NO.	SMR CODE	a.	b.	c.	d.	PART NUMBER	DESCRIPTION AND USABLE ON CODE	QTY	USMC QTY/EQUIP
	ARMY	AIR FORCE	NAVY	USMC	CAGEC		GROUP 09 IGNITION SYSTEM		
							FIG. 11 CONTACT AND GOVERNOR COVER		
1	PAOZZ	PAOZZ		PAOZZ	97403	13206E1400	COVER ASSEMBLY:BREAKER POINTS UOC:A,B,C	1	
1	XDOZZ	XDOZZ		XDOZZ	97403	13226E6178	COVER ASSEMBLY,GOVERNOR (USE TO REPLACE ITEM 1 WHEN BREAKERLESS IGNITION SYSTEM ADDED TO A,B,OR C LEVEL ENGINE)	1	
2	PAOZZ	PAOZZ		PAOZZ	97403	13218E0320-249	NUT,MACHINE:STRAP MTG. UOC:A,B,C	1	
3	PAOZZ	PAOZZ		AOZZ	97403	13218E0517-51	WASHER,LOCK:STRAP MTG. UOC:A,B,C	2	
4	PAOZZ	PAOZZ		PAOZZ	97403	13215E3815	STRAP,GROUNDING UOC:A,B,C	1	
5	PAOZZ	PAOZZ		PAOZZ	00756	NAS1598-34	WASHER,SELF-SEALING UOC:A,B,C	1	
6	PAOZZ	PAOZZ		PAOZZ	97403	13218E0504-56	SCREW AND WASHER,ASSEMBLED,STRAP MTG. UOC:A,B,C	1	
7	PAOZZ	PAOZZ		PAOZZ	97403	13206E0434	GASKET:BREAKER POINT COVER (PART OF KIT: P/N 13214E8186)	1	
							END OF FIGURE		

Section II

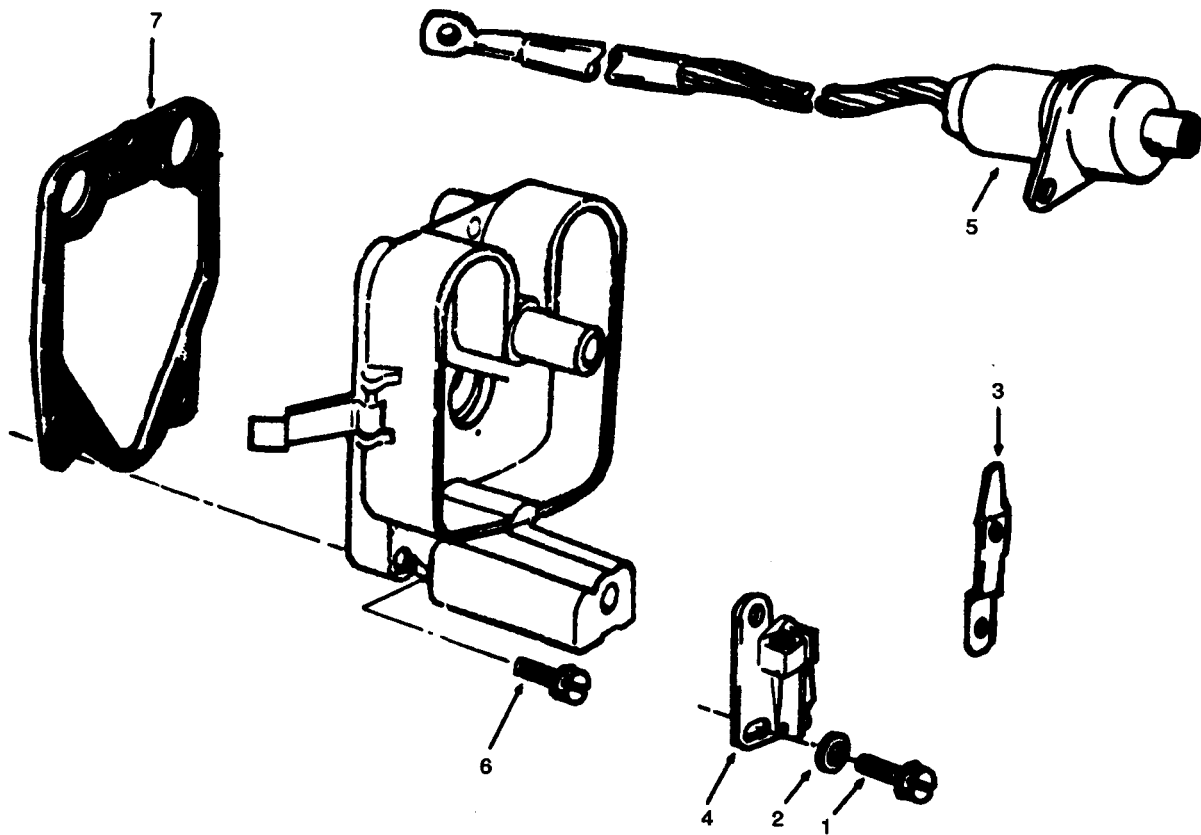


FIGURE 12. Ignition Condenser, Lead and Contact

SECTION II									
(1)	(2)			(3)	(4)	(5)	(6)	(7)	
ITEM	SMR CODE	a.	b.	c.	d.	PART	DESCRIPTION AND	USMC	
NO.	ARMY	FORCE	AIR	NAVY	USMC	NUMBER	USABLE ON CODE	QTY/	
								EQUIP	
GROUP 09 IGNITION SYSTEM									
FIG. 12 IGNITION CONDENSER, LEAD AND CONTACT									
1	PAOZZ	PAOZZ			PAOZZ	97403	13218E0504-32	SCREW AND LOCKWASHER ASSEMBLY: CONTACT AND CAPACITOR AND CAM MTG, NO. 8-32 X 5/16 IN. LG. UOC: A, B, C	6
2	PAOZZ	PAOZZ			PAOZZ	97403	13206E0444-3	WASHER, FLAT: CONTACT CAPACITOR AND CAM MTG UOC: A, B, C	1
3	PAOZZ	PAOZZ			PAOZZ	97403	13214E7057	STRIP, JUMPER UOC: A, B, C	2
4	KFOZZ	KFOZZ			KFOZZ	97403	9786E70	BREAKER ASSEMBLY (PART OF KIT, P/N 13214E8180) UOC: A, B, C	1
5	KFOZZ	KFOZZ			KFOZZ	97403	13212E3762-2	CAPACITOR ASSEMBLY (PART OF KIT, P/N 13214E8180) UOC: A, B, C	1
6	PAFZZ	PAFZZ			PAFZZ	97403	13218E0504-59	SCREW, ASSEMBLED WITH WASHER: GOVERNOR MTG	3
7	PAFZZ	PAFZZ			PAFZZ	97403	9786E65-1	GASKET, ACCESSORY GOVERNOR HOUSING (PART OF KIT, P/N 13214E8186)	1
	PAOZZ	PAOZZ			PAOZZ	97403	13214E8180	KIT, IGNITION REPAIR UOC: A, B, C CONTACT ASSEMBLY (1) 12-4 CAPACITOR ASSEMBLY (1) 12-5	V
END OF FIGURE									

Section II

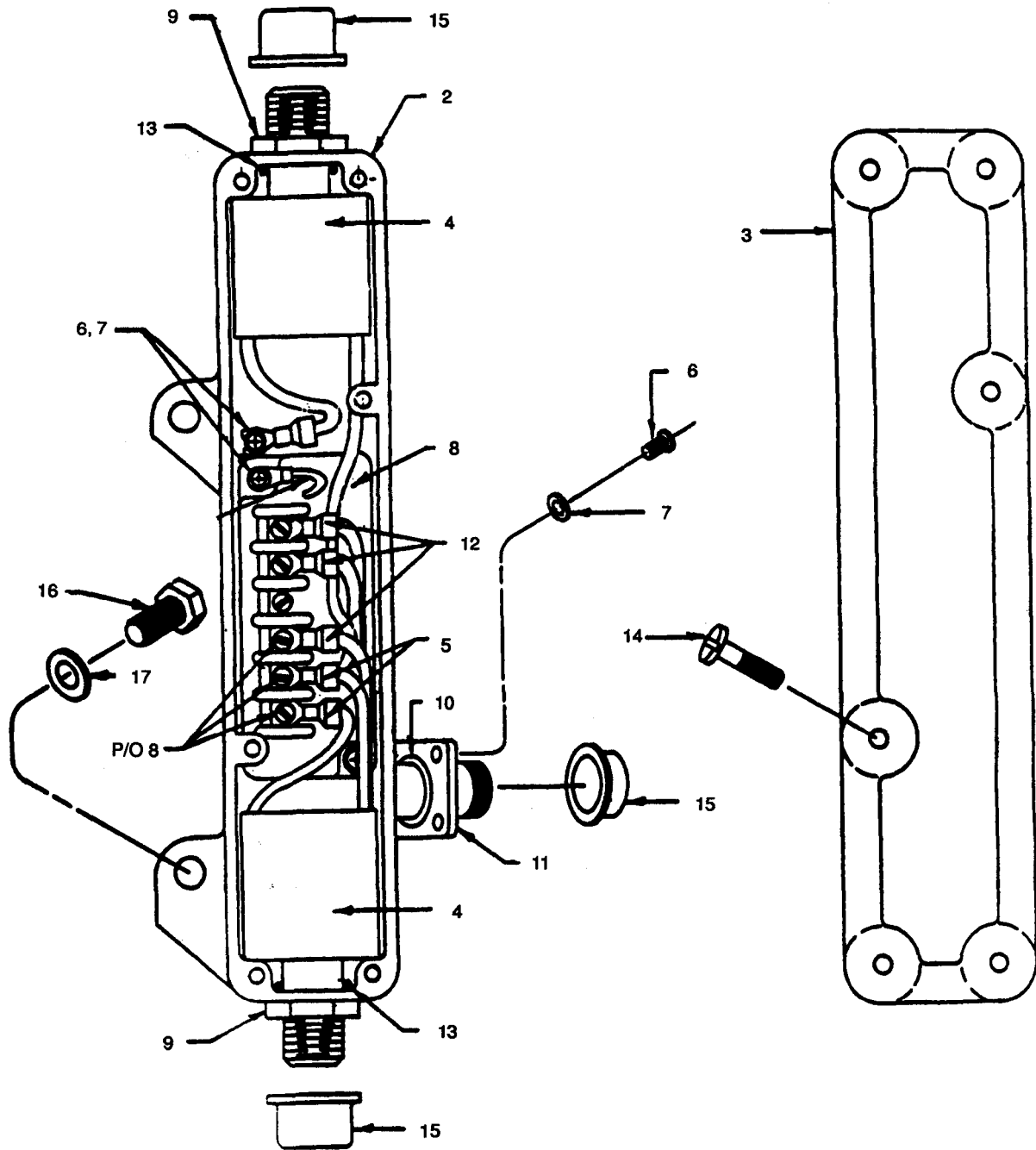


FIGURE 13. Breakerless Ignition Control Unit

SECTION II									
(1)	(2)			(3)	(4)	(5)	(6)	(7)	
ITEM NO.	SMR CODE	a.	b.	c.	d.	PART NUMBER	DESCRIPTION AND USABLE ON CODE	QTY	USMC QTY/ EQUIP
	ARMY	AIR FORCE	NAVY	USMC	CAGEC				
GROUP 09 IGNITION SYSTEM									
FIG. 13 BREAKERLESS IGNITION CONTROL UNIT									
1	PAFZZ	PAFZZ			PAFZZ	97403 13226E1645	CONTROL UNIT, ASSEMBLY (PART OF KIT, P/N 13226E1700) UOC:D	1	
2	XAFZZ	XAFZZ			XAFZZ	97403 13226E1631	ENCLOSURE, IGNITION (PART OF KIT, P/N 13226E1700) UOC:D	1	
3	XAFZZ	XAFZZ			XAFZZ	97403 13226E1649-2	COVER, IGNITION (PART OF KIT, P/N 13226E1700) UOC:D	1	
4	PAFZZ	PAFZZ			PAFZZ	97403 13226E1632-1	TRANSFORMER, IGNITION (PART OF KIT, P/N 13226E1700) UOC:D	2	
5	PAFZZ	PAFZZ			PAFZZ	97403 13226E1618-2	TERMINAL LUG, SLOTTED UOC:D	4	
6	PAFZZ	PAFZZ			PAFZZ	96906 MS35206-227	SCREW, NO. 6-32X.312 IN. LG. (PART OF KIT, P/N 13226E1700) UOC:D	7	
7	PAFZZ	PAFZZ			PAFZZ	96906 MS35337-37	WASHER, LOCK (PART OF KIT, P/N 13226E1700) UOC:D	7	
8	PAFZZ	PAFZZ			PAFZZ	97403 13226E1633	ELECTRONIC MODULE (PART OF KIT, P/N 13226E1700) UOC:D	1	
9	PAFZZ	PAFZZ			PAFZZ	97403 13226E1613	NUT, TRANSFERRED (PART OF KIT, P/N 13226E1700) UOC:D	2	
10	PAFZZ	PAFZZ			PAFZZ	96906 MS2875-014	PACKING, PREFORMED (PART OF KIT, P/N 13226E1700) UOC:D	1	
11	PAFZZ	PAFZZ			PAFZZ	97403 13226E1634	CONNECTOR, RCPT., WIRED (PART OF KIT, P/N 13226E1700) UOC:D	1	
12	PAFZZ	PAFZZ			PAFZZ	97403 13226E1618-2	TERMINAL LUG, SLOTTED UOC:D	3	
13	PAOZZ	PAOZZ			PAOZZ	96906 MS2877-019	PACKING, PREFORMED (PART OF KIT, P/N 13226E1700) UOC:D	2	

SECTION II									
(1)	(2)			(3)	(4)	(5)	(6)	(7)	
ITEM NO.	SMR CODE		c.	d.	USMC CAGEC	PART NUMBER	DESCRIPTION AND USABLE ON CODE	QTY	USMC QTY/ EQUIP
	a.	b.							
	ARMY	AIR FORCE	NAVY						
14	PAFZZ	PAFZZ		PAFZZ	96906	MS3212-25	SCREW, SELF-SEALING (PART OF KIT, P/N 13226E1700) UOC:D	6	
15	PAOZZ	PAOZZ		PAOZZ	96906	MS70367-10R	CAP, PROTECTIVE (PART OF KIT, P/N 13226E1700) UOC:D	3	
16	PAFZZ	PAFZZ		PAFZZ	97403	13218E0504-70	SCREW UOC:D	2	
17	PAFZZ	PAFZZ		PAFZZ	96906	MS27183-9	WASHER, PLAIN UOC:D	2	
END OF FIGURE									



TM 9-2805-257-24P  
TO 38G2-103-4  
SL-4-03521B

Section II

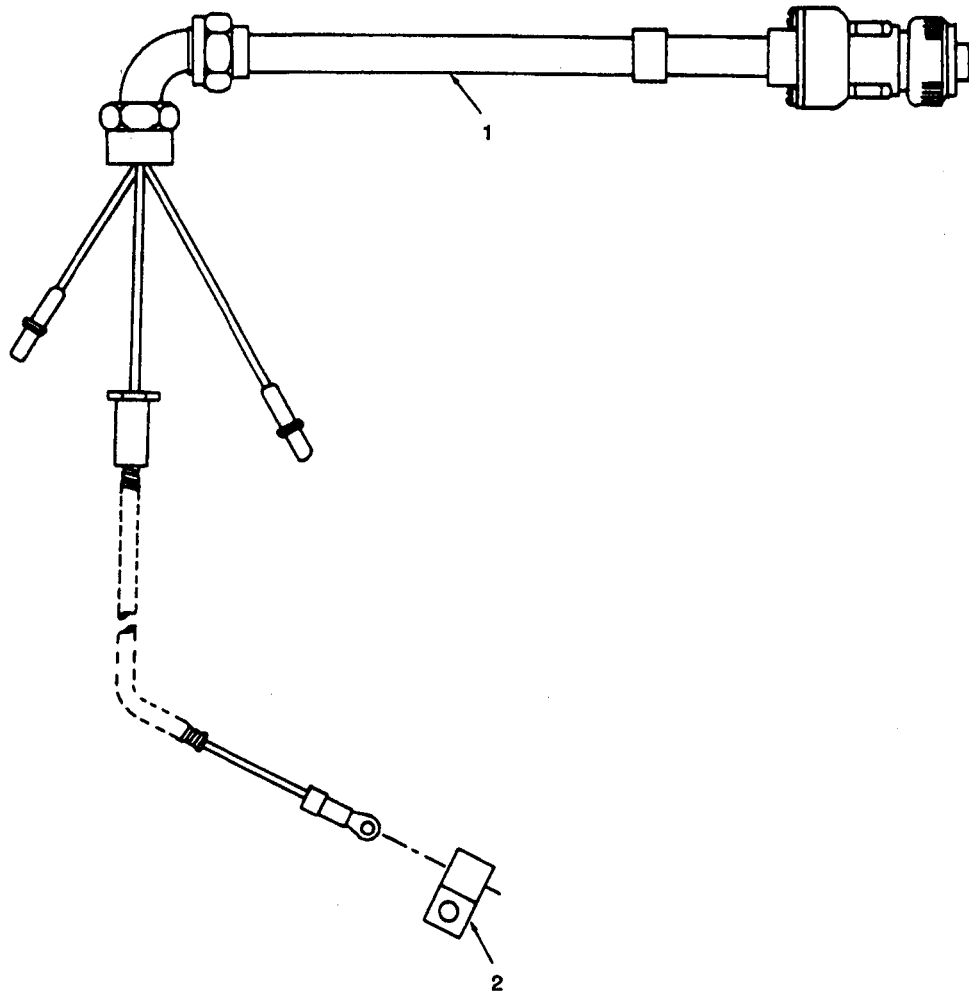


FIGURE 14. Low Voltage Cable



SECTION II									
(1)	(2)			(3)	(4)	(5)	(6)	(7)	
ITEM NO.	SMR CODE	a.	b.	c.	d.	PART NUMBER	DESCRIPTION AND USABLE ON CODE	QTY	USMC QTY/EQUIP
	ARMY	AIR FORCE	NAVY	USMC	CAGEC				
							GROUP 09 IGNITION SYSTEM		
							FIG. 14 LOW VOLTAGE CABLE		
1	PAFZZ	PAFZZ			PAFZZ	97403 13226E1643	CABLE ASSEMBLY,LOW VOLTAGE (PART OF KIT,P/N 13226E1700) UOC:D	1	
2	PAFZZ	PAFZZ			PAFZZ	96906 MS21333-66	CLAMP,LOOP (PART OF KIT,P/N 13226E1700) UOC:D	2	
							END OF FIGURE		

Section II

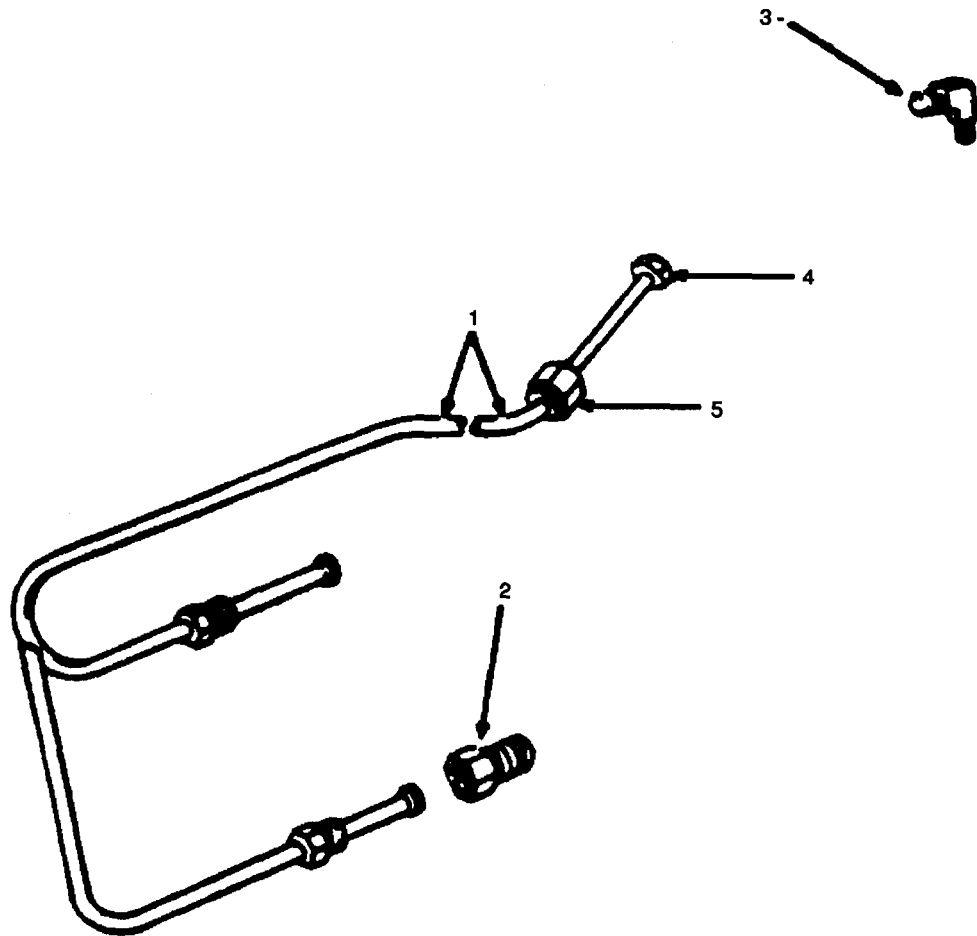


FIGURE 15. Breather Line

SECTION II									
(1)	(2)			(3)	(4)	(5)	(6)	(7)	
ITEM NO.	SMR CODE		c.	d.	CAGEC	PART NUMBER	DESCRIPTION AND USABLE ON CODE	QTY	USMC QTY/ EQUIP
	a.	b.							
ARMY	AIR FORCE	NAVY	USMC						
GROUP 10 BREATHER LINE ASSEMBLY									
FIG. 15 BREATHER LINE									
1	PAOZZ	PAOZZ		PAOZZ	97403	13214E7059	LINE ASSEMBLY,BREATHER	1	
2	PAOZZ	PAOZZ		PAOZZ	97403	13218E0145-3	CONNECTOR,MALE PIPE END:BREATHER LINE TO CYLINDER HEAD	2	
3	PAOZZ	PAOZZ		PAOZZ	96906	MS39171-14	ELBOW:BREATHER LINE TO BREATHER	1	
4	PAOZZ	PAOZZ		PAOZZ	97403	9786E60-3	SLEEVE,RUBBER	1	
5	PAOZZ	PAOZZ		PAOZZ	97403	9786E60-2	NUT,COMPRESSION	1	
END OF FIGURE									

Section II

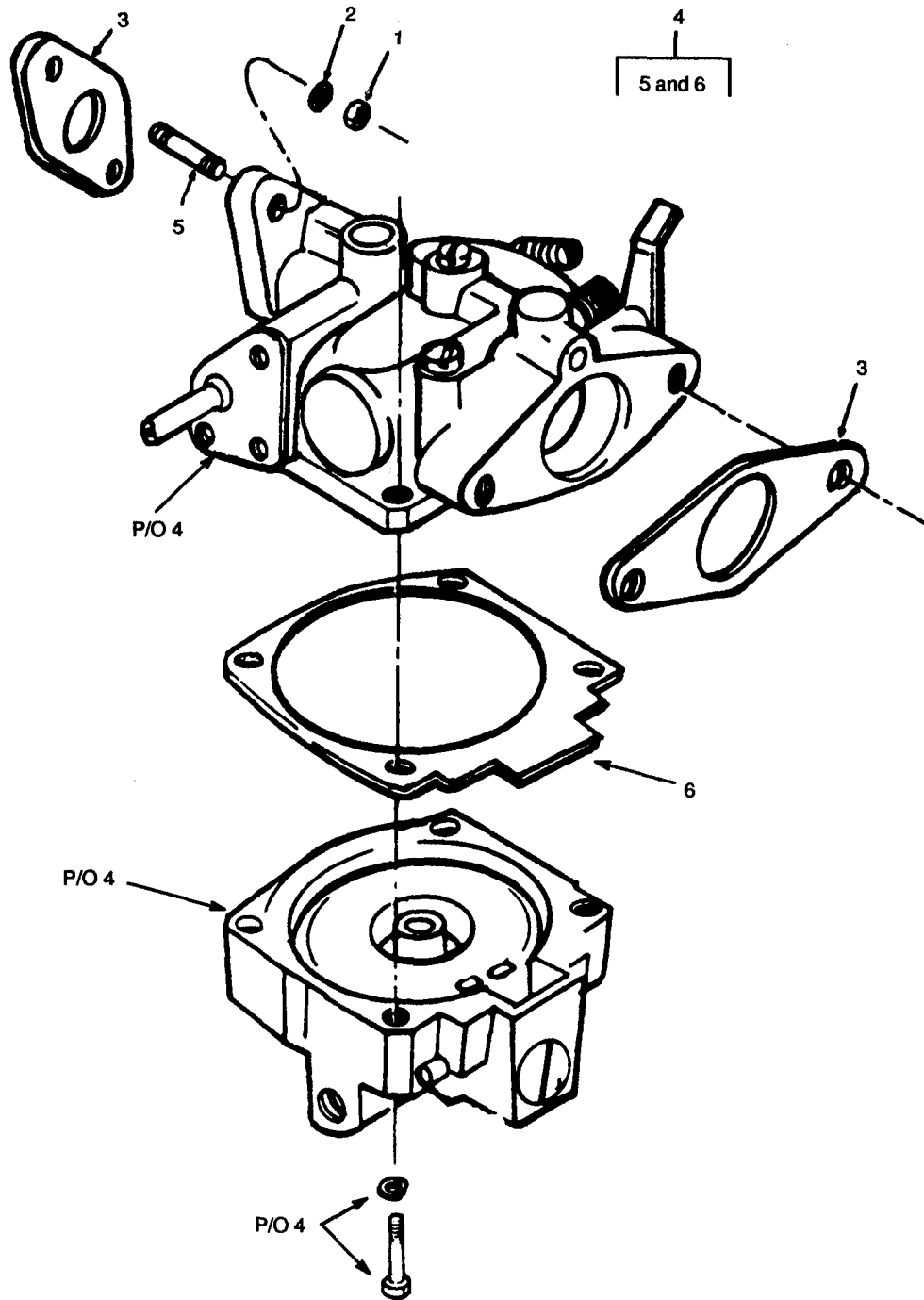


FIGURE 16. Carburetor

SECTION II									
(1)	(2)			(3)	(4)	(5)	(6)	(7)	
ITEM NO.	SMR CODE		c.	d.	CAGEC	PART NUMBER	DESCRIPTION AND USABLE ON CODE	QTY	USMC QTY/ EQUIP
	a.	b.							
	ARMY	AIR FORCE	NAVY	USMC					
GROUP 11 CARBURETOR AND THROTTLE CONTROL									
FIG. 16 CARBURETOR									
1	PAOZZ	PAOZZ		PAOZZ	96906	MS51968-2	NUT,MACHINE,CARBURTOR MTG	2	
2	PAOZZ	PAOZZ		PAOZZ	96906	MS35335-33	WASHER,LOCK,CARBURETOR MTG	2	
3	PAOZZ	PAOZZ		PAOZZ	97403	9786E26-2	GASKET,CARBURTOR MTG (PART OF KITS,P/N 13214E8186 &13214E8192)	2	
4	KFOZZ	KFOZZ		KFOZZ	97403	9786E27	CARBURTOR (PART OF KIT,P/N13214E8192)	1	
5	PAOZZ	PAOZZ		PAOZZ	88044	AN125964	STUD,CARBURETOR MTG (PART OF KIT,P/N 13214E8192)	2	
6	XDOZZ	XDOZZ		XDOZZ	97403	9786E43-1	GASKET,CARBURETOR FLOAT BOWL (USED ON TILLOTSEN CARBURETOR MODEL CM-4)	1	
6	XDOZZ	XDOZZ		XDOZZ	97403	13215E3837	GASKET,CARBURETOR FLOAT BOWL (USED ON MARVEL SCHEKLER MODELS 10-5057 AND 10-5057-1)	1	
	PAOZZ	PAOZZ		PAOZZ	97403	13214E8192	KIT,CARBURETOR REPLACEMENT GASKET (2) 16-3 CARBURETOR (1) 16-4 STUD (2) 16-5	V	
END OF FIGURE									

TM 9-2805-257-24P

TO 38G2-103-4

SL-4-03521B

Section II

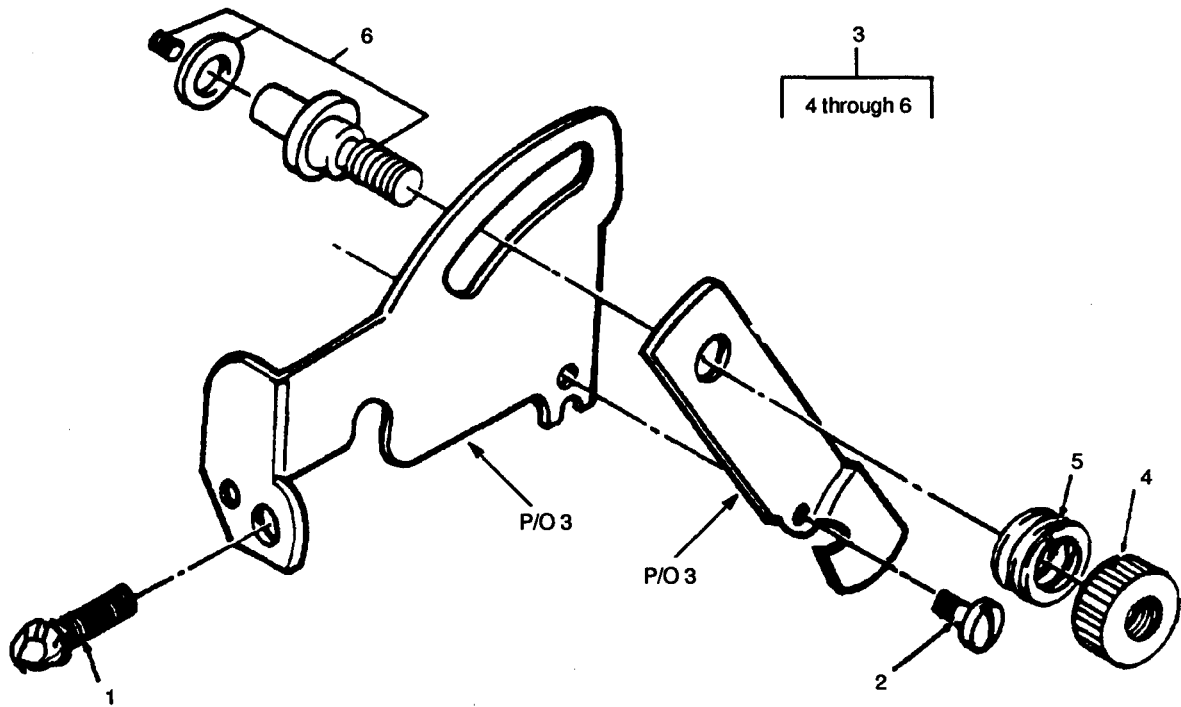


FIGURE 17. Throttle Control

SECTION II										
(1)	(2)					(3)	(4)	(5)	(6)	(7)
ITEM NO.	SMR CODE		c.	d.	CAGEC	PART NUMBER	DESCRIPTION AND USABLE ON CODE	QTY	USMC QTY/ EQUIP	
	a.	b.								
	ARMY	AIR FORCE	NAVY	USMC						
GROUP 11 CARBURETOR AND THROTTLE CONTROL										
FIG.17 THROTTLE CONTROL										
1	PAOZZ	PAOZZ		PAOZZ	97403	13218E0504-67	SCREW, ASSEMBLED WITH LOCKWASHER	2		
2	PAOZZ	PAOZZ		PAOZZ	97403	13206E1413	SCREW, THROTTLE LEVER MTG	1		
3	PAOZZ	PAOZZ		PAOZZ	97403	13206E1430	CONTROL ASSEMBLY, CARBURETOR	1		
4	PAOZZ	PAOZZ		PAOZZ	97403	13206E1405	KNOB, CONTROL: CARBURETOR	1		
5	PAOZZ	PAOZZ		PAOZZ	97403	13206E1409	SPRING, CARBURETOR, CONTROL	1		
6	XAOZZ	XAOZZ		XAOZZ	97403	13206E1489	PIN AND BOLT ASSEMBLY: CARBURETOR	1		
END OF FIGURE										

TM 9-2805-257-24P

TO 38G2-103-4

SL-4-03521B

Section II

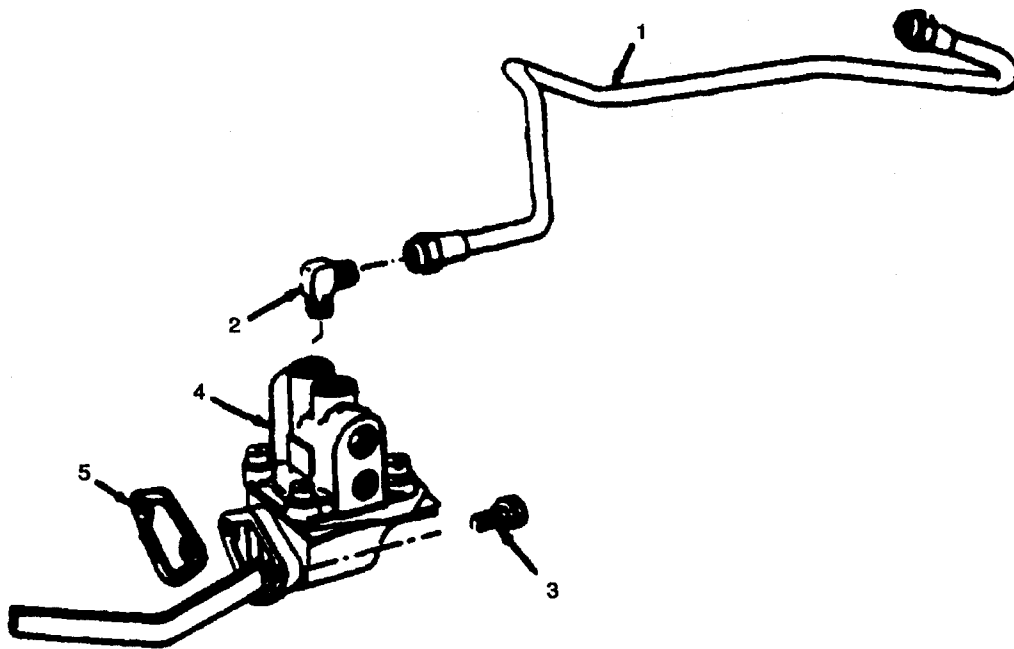


FIGURE 18. Fuel Line and Pump



SECTION II										
(1)	(2)					(3)	(4)	(5)	(6)	(7)
ITEM NO.	SMR CODE		c.	d.	CAGEC	PART NUMBER	DESCRIPTION AND USABLE ON CODE	QTY	USMC QTY/ EQUIP	
	a.	b.								
	ARMY	AIR FORCE	NAVY	USMC						
GROUP 12 FUEL LINE AND FUEL PUMP ASSEMBLY										
FIG.18 FUEL LINE AND PUMP										
1	PAOZZ	PAOZZ		PAOZZ	97403	978E42-1	LINE ASSEMBLY,FUEL	1		
2	PAOZZ	PAOZZ		PAOZZ	97403	13218E0170-30	ELBOW: FUEL LINE TO FUEL PUMP AND CARBURETOR	2		
3	PAOZZ	PAOZZ		PAOZZ	97403	13218E0504-68	SCREW,ASSEMBLED WITH LOCKWASHER	2		
4	PAOZZ	PAOZZ		PAOZZ	97403	13226E2230-2	PUMP,FUEL,CAM ACTIVATED	1		
5	PAOZZ	PAOZZ		PAOZZ	97403	13206E0401	GASKET:FUEL PUMP MTG (PART OF KIT,P/N 13214E8186)	1		
END OF FIGURE										

Section II

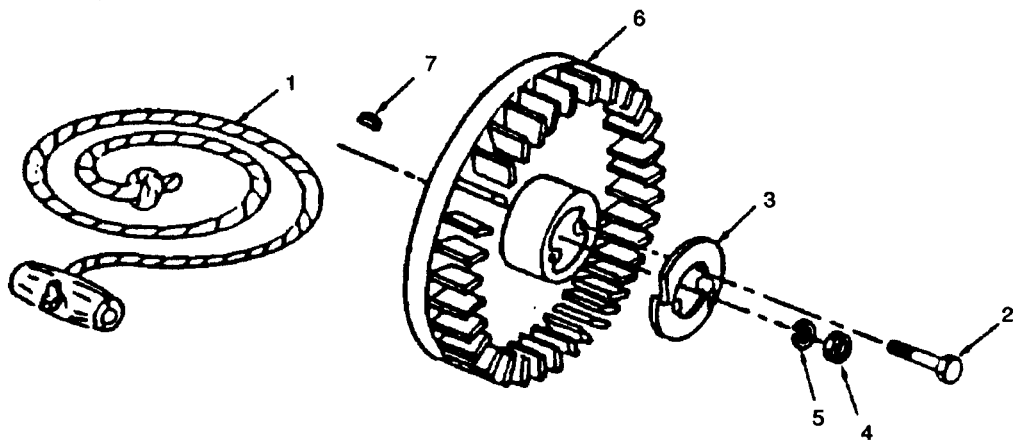


FIGURE 19. Flywheel Assembly

SECTION II										
(1)	(2)					(3)	(4)	(5)	(6)	(7)
ITEM NO.	SMR CODE		c.	d.	CAGEC	PART NUMBER	DESCRIPTION AND USABLE ON CODE	QTY	USMC QTY/ EQUIP	
	a.	b.								
	ARMY	AIR FORCE	NAVY	USMC						
GROUP 13 FLYWHEEL ASSEMBLY										
FIG.19 FLYWHEEL ASSEMBLY										
1	PAOZZ	PAOZZ		PAOZZ	97403	9786E121	ROPE,STARTER CABLE ASSEMBLY	1		
2	PAOZZ	PAOZZ		PAOZZ	97403	13218E0549	SCREW,ASSEMBLED WITH WASHER:FLANGE MTG	2		
3	PAOZZ	PAOZZ		PAOZZ	97403	9786E119-1	FLANGE,ROPE PULLEY	1		
4	PAFZZ	PAFZZ		PAFZZ	97403	13218E0320-75	NUT,MACHINE: FLYWHEEL MTG	1		
5	PAFZZ	PAFZZ		PAFZZ	97403	13218E0519-42	WASHER,LOCK: FLYWHEEL MTG.	1		
6	PAFZZ	PAFZZ		PAFZZ	97403	9786E57	FLYWHEEL ASSEMBLY	1		
7	PAFZZ	PAFZZ		PAFZZ	96906	MS35756-6	KEY,WOODRUFF: FLYWHEEL MTG	1		
END OF FIGURE										

TM 9-2805-257-24P  
TO 38G2-103-4  
SL-4-03521B

Section II

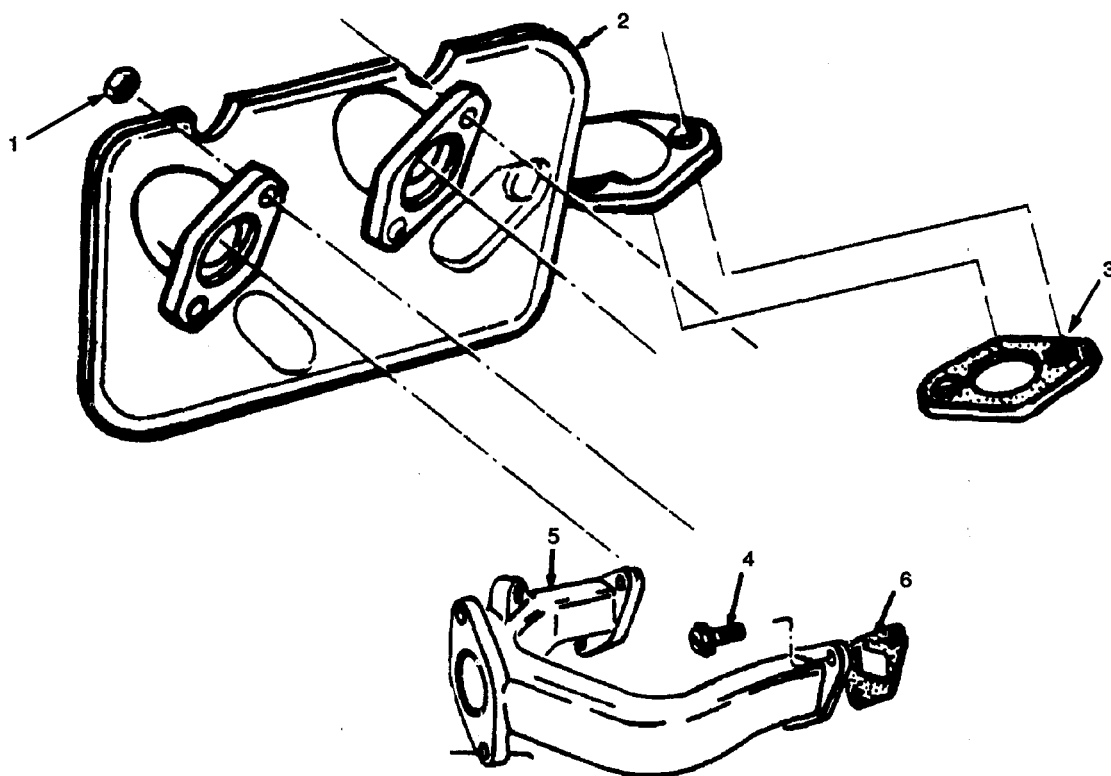


FIGURE 20. Intake and Exhaust

SECTION II										
(1)	(2)					(3)	(4)	(5)	(6)	(7)
ITEM NO.	SMR CODE		c.	d.	CAGEC	PART NUMBER	DESCRIPTION AND USABLE ON CODE	QTY	USMC QTY/ EQUIP	
	a.	b.								
	ARMY	AIR FORCE	NAVY	USMC						
GROUP 14 MANIFOLDS										
FIG. 20 INTAKE AND EXHAUST										
1	PAFZZ	PAFZZ	-	PAFZZ	97403	9786E50-1	NUT, SELF-LOCKING: MUFFLER MTG	4		
2	PAOZZ	PAOZZ	-	PAOZZ	97403	9787E23	MUFFLER, ENGINE EXHAUST	4		
3	PAOZZ	PAOZZ	-	PAOZZ	97403	9786E50-2	GASKET: MUFFLER MTG (PART OF KIT, P/N 13214E8186)	3		
4	PAOZZ	PAOZZ	-	PAOZZ	97403	13218E0504-68	SCREW, ASSEMBLED WITH WASHER, MANIFOLD MTG	4		
5	PAOZZ	PAOZZ	-	PAOZZ	97403	9787E20	MANIFOLD, INTAKE	1		
6	PAOZZ	PAOZZ	-	PAOZZ	97403	9786E26-4	GASKET: INTAKE MANIFOLD MTG (PART OF KIT, P/N 13214E8186)	2		
END OF FIGURE										

Section II

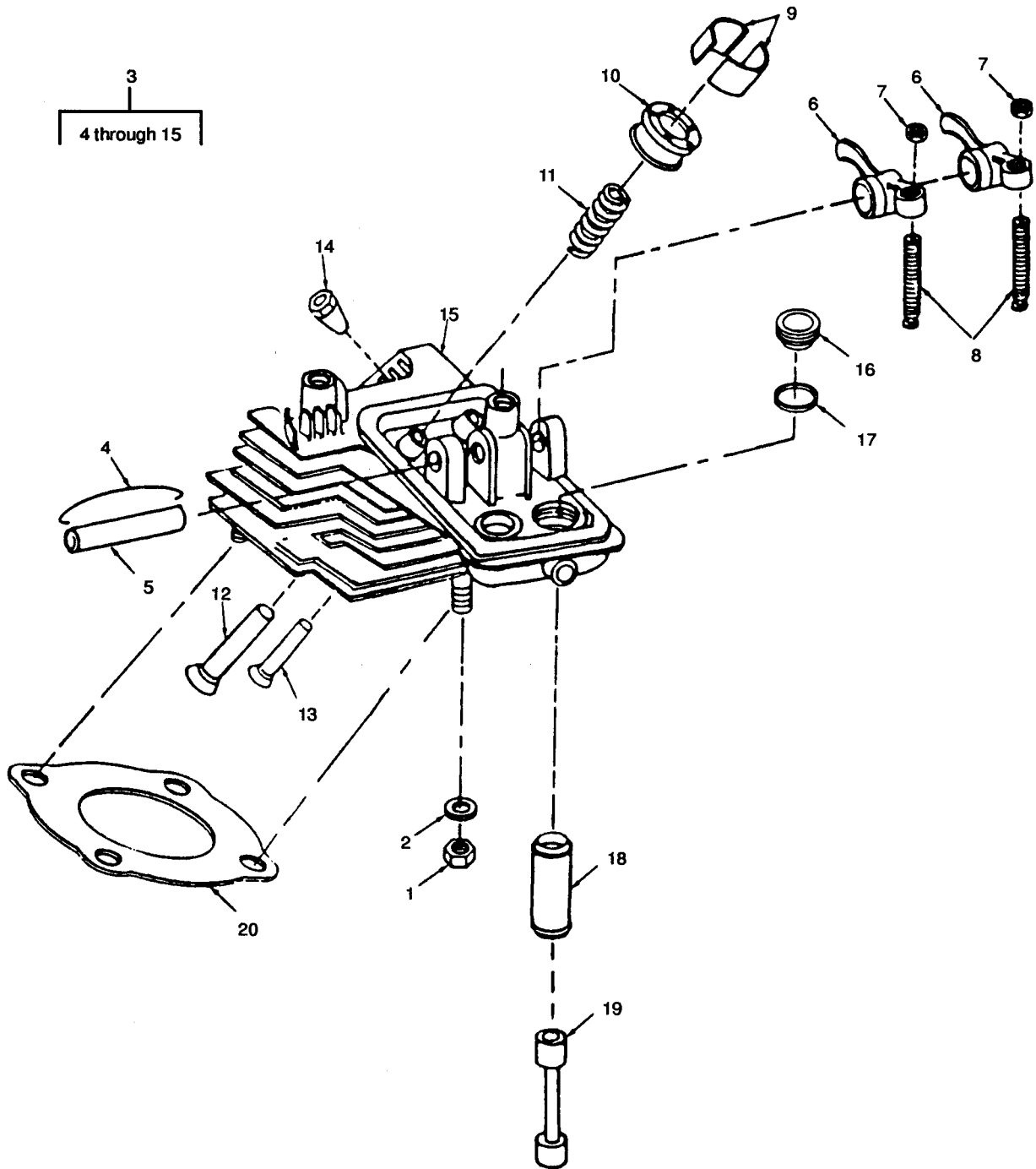


FIGURE 21. Cylinder Head Assembly

SECTION II										
(1)	(2)					(3)	(4)	(5)	(6)	(7)
ITEM NO.	SMR CODE	a.	b.	c.	d.	CAGEC	PART NUMBER	DESCRIPTION AND USABLE ON CODE	QTY	USMC QTY/EQUIP
	ARMY									
GROUP 15 CYLINDER HEAD ASSEMBLY										
FIG. 21 CYLINDER HEAD ASSEMBLY										
1	PAFZZ	PAFZZ	-	PAFZZ	96906	MS21045L5		NUT,SELF-LOCKING: CYLINDER HEAD MTG	4	
2	PAFZZ	PAFZZ	-	PAFZZ	96906	MS20002-6		WASHER,FLAT: CYLINDER HEAD MTG	4	
3	KFFZZ	KFFZZ	-	KFFZZ	97403	13215E4181		CYLINDER HEAD ASSEMBLY (PART OF KIT, P/N 13214E8199)	1	
4	PAFZZ	PAFZZ	-	PAFZZ	97403	9786E98-1		CLIP,ROCKET SHAFT (PART OF KIT, P/N 13214E8199)	1	
5	PAFZZ	PAFZZ	-	PAFZZ	97403	9786E98-3		SHAFT,ROCKER ARM (PART OF KIT, P/N 13214E8199)	1	
6	PAFZZ	PAFZZ	-	PAFZZ	97403	9786E101-3		ROCKER ARM (PART OF KIT, P/N 13214E8199)	2	
7	PAFZZ	PAFZZ	-	PAFZZ	97403	13218E0320-32		NUT,MACHINE ROCKER ARM ADJUSTING (PART OF KIT, P/N 13214E8199)	2	
8	PAFZZ	PAFZZ	-	PAFZZ	97403	9786E101-2		SCREW,VALVE ADJUSTING (PART OF KIT, P/N 13214E8199)	2	
9	KFFZZ	KFFZZ	-	KFFZZ	97403	9786E100-2		LOCK,RETAINER HALF (PART OF KITS, P/N 13214E8181,13214E8188 & 13214E8199)	4	
10	PAFZZ	PAFZZ	-	PAFZZ	97403	9786E102		ROTOCAP ASSEMBLY (PART OF KIT, P/N 13214E8199)	2	
11	PAFZZ	PAFZZ	-	PAFZZ	97403	9786E98-2		SPRING,VALVE (PART OF KIT, P/N 13214E8199)	2	
12	KFOZZ	KFOZZ	-	KFOZZ	97403	9786E100-1		VALVE,EXHAUST (PART OF KITS, P/N 13214E8181 & 13214E8199)	1	
13	KFOZZ	KFOZZ	-	KFOZZ	97403	13214E9382		VALVE,INTAKE (PART OF KITS, P/N 13214E8188 & 13214E8199)	1	
14	PAFZZ	PAFZZ	-	PAFZZ	97403	13218E0135-3		CONNECTOR,BREATHER LINE (PART OF KIT, P/N 13214E8199)	1	
15	XAFZZ	XAFZZ	-	XAFZZ	97403	13215E4180		CYLINDER HEAD (PART OF KIT, P/N 13214E8199)	1	
16	PAFZZ	PAFZZ	-	PAFZZ	97403	9786E93-4		SCREW,PACKING,PUSH ROD HOUSING	2	
17	PAFZZ	PAFZZ	-	PAFZZ	97403	9786E92-3		PACKING,PUSH ROD HOUSING (PART OF KIT, P/N 13214E8186)	4	
18	PAFZZ	PAFZZ	-	PAFZZ	97403	9786E93-2		HOUSING,PUSH ROD	2	

SECTION II										
(1)	(2)					(3)	(4)	(5)	(6)	(7)
ITEM NO.	SMR CODE				USMC	CAGEC	PART NUMBER	DESCRIPTION AND USABLE ON CODE	QTY	USMC QTY/EQUIP
	ARMY	AIR FORCE	NAVY	d.						
19	PAFZZ	PAFZZ	-	PAFZZ	97403	13206E0110	PUSH ROD ASSEMBLY	2		
20	PAFZZ	PAFZZ	-	PAFZZ	97403	9786E107-1	GASKET,CYLINDER HEAD (PART OF KIT, P/N 13214E8186)	1		
	PAFZZ	PAFZZ	-	PAFZZ	97403	13214E8181	KIT,EXHAUST VALVE LOCK (2) 21-9 VALVE (1) 21-12	V		
	PAFZZ	PAFZZ	-	PAFZZ	97403	13214E8188	KIT, INTAKE VALVE LOCK (2) 21-9 VALVE (1) 21-13	V		
	PAFZZ	PAFZZ	-	PAFZZ	97403	13214E8199	KIT,CYLINDER HEAD CYLINDER HEAD ASSY (1) 21-3 CLIP (1) 21-4 SHAFT (1) 21-5 ROCKER ARM (2) 21-6 NUT (2) 21-7 SCREW (2) 21-8 LOCK (4) 21-9 ROTOCAP (2) 21-10 SPRING (2) 21-11 VALVE,EXHAUST (1) 21-12 VALVE, INTAKE (1) 21-13 CONNECTOR (1) 21-14 CYLINDER HEAD (1) 21-15	V		
END OF FIGURE										





Section II

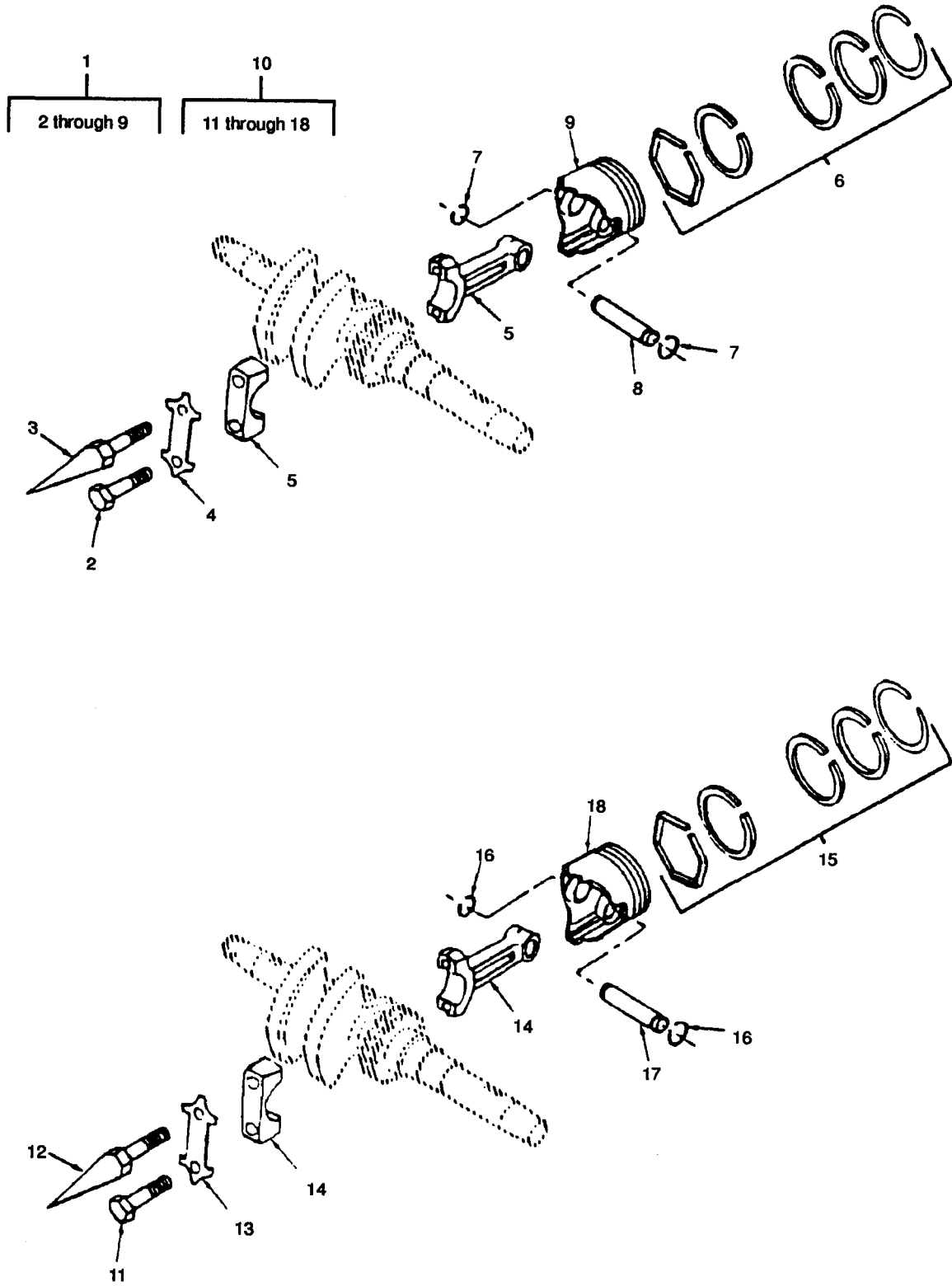


FIGURE 22. Piston and Connecting Rod Assembly

SECTION II										
(1)	(2)					(3)	(4)	(5)	(6)	(7)
ITEM NO.	SMR CODE	a.	b.	c.	d.	CAGEC	PART NUMBER	DESCRIPTION AND USABLE ON CODE	QTY	USMC QTY/EQUIP
	ARMY	AIR FORCE	NAVY	USMC						
GROUP 16 PISTON AND CONNECTING ROD ASSEMBLY										
FIG. 22 PISTON AND CONNECTING ROD ASSEMBLY										
1	KFFZZ	KFFZZ	-	KFFZZ	97403	13214E7064		PISTON AND CONNECTING ROD ASSEMBLY (PART OF KIT, P/N 13214E8191)	1	
2	PAFZZ	PAFZZ	-	PAFZZ	97403	9786E113-3		BOLT,CONNECTING ROD (PART OF KIT, P/N 13214E8191)	1	
3	PAFZZ	PAFZZ	-	PAFZZ	97403	9786E113-1		OIL DIPPER,CONNECTING ROD BOLT (PART OF KIT, P/N 13214E8191)	1	
4	PAFZZ	PAFZZ	-	PAFZZ	97403	9786E113-2		LOCKWASHER,TAB (PART OF KIT, P/N 13214E8191)	1	
5	PAFZZ	PAFZZ	-	PAFZZ	97403	9786E112		CONNECTING ROD AND CAP (PART OF KIT, P/N 13214E8191)	1	
6	PAFZZ	PAFZZ	-	PAFZZ	97403	13222E6723		PISTON RINGS SET (PART OF KITS, P/N 13214E8190 & 13214E8191)	1	
7	PAFZZ	PAFZZ	-	PAFZZ	96906	MS16624-3040		RING,RETAINING,PISTON PIN (PART OF KITS, P/N 13214E8190 & 13214E8191)	2	
8	KFFZZ	KFFZZ	-	KFFZZ	97403	9786E111-2		PIN,PISTON,GROOMED (PART OF KITS, P/N 13214E8190 & 13214E8191)	1	
9	KFFZZ	KFFZZ	-	KFFZZ	97403	13206E0102		PISTON: 2-1/4 IN. DIA. (PART OF KIT, P/N 13214E8191)	1	
10	KFFZZ	KFFZZ	-	KFFZZ	97403	13226E8002		PISTON AND CONNECTING ROD ASSEMBLY: OPTIONAL (PART OF KIT, P/N 13214E8191)	1	
11	KFFZZ	KFFZZ	-	KFFZZ	97403	13226E8003		BOLT,CONNECTING ROD (PART OF KIT, P/N 13214E8191)	1	
12	KFFZZ	KFFZZ	-	KFFZZ	97403	13226E8004		OIL DIPPER,CONNECTING ROD BOLT (PART OF KIT, P/N 13214E8191)	1	
13	PAFZZ	PAFZZ	-	PAFZZ	97403	9786E113-2		LOCKWASHER TAB (PART OF KIT, P/N 13214E8191)	1	
14	KFFZZ	KFFZZ	-	KFFZZ	97403	13226E8001		CONNECTING ROD AND CAP (PART OF KIT, P/N 13214E8191)	1	
15	PAFZZ	PAFZZ	-	PAFZZ	97403	13226E6723		PISTON RING SET (PART OF KITS, P/N 13214E8190 & 13214E8191)	1	
16	PAFZZ	PAFZZ	-	PAFZZ	97403	MS16624E-3040		RING,RETAINING, PISTON PIN (PART OF KITS, P/N 13214E8190 & 13214E8191)	1	
17	KFFZZ	KFFZZ	-	KFFZZ	97403	9786E111-2		PIN,PISTON,GROOMED (PART OF KIT, P/N 13214E8191)	1	

SECTION II									
(1)	(2)			(3)	(4)	(5)	(6)	(7)	
ITEM NO.	SMR CODE		c.	d.	CAGEC	PART NUMBER	DESCRIPTION AND USABLE ON CODE	QTY	USMC QTY/ EQUIP
	a.	b.							
	ARMY	AIR FORCE	NAVY	USMC					
18	KFFZZ	KFFZZ	-	KFFZZ	97403	13206E0102	PISTON: 2-1/4 IN. DIA. (PART OF KIT, P/N 13214E8191)	1	
18	KFFZZ	KFFZZ	-	KFFZZ	97403	13215E4163-4	PISTON:"R" SIZE (PART OF KIT, P/N 13214E8190)	1	
	PAFZZ	PAFZZ	-	PAFZZ	97403	13214E8190	KIT,"R" SIZE PISTON AND RING RING SET (1) 22-6 RETAINING RING (2) 22-7 PISTON PIN (1) 22-8 RING SET (1) 22-15 RETAINING RING (2) 22-16 "R" SIZE PISTON (1) 22-18	V	
	PAFZZ	PAFZZ	-	PAFZZ	97403	13214E8191	KIT,PISTON AND CONNECTING ROD ASSEMBLY (1) 22-1 BOLT (1) 22-2 OIL DIPPER (1) 22-3 TAB (1) 22-4 ROD (1) 22-5 RING SET (1) 22-6 RETAINING RING (2) 22-7 PIN (1) 22-8 PISTON (1) 22-9 ASSEMBLY (1) 22-10 BOLT (1) 22-11 OIL DIPPER (1) 22-12 TAB (1) 22-13 ROD (1) 22-14 RING SET (1) 22-15 RETAINING RING (2) 22-16 PIN (1) 22-17 PISTON (1) 22-18  END OF FIGURE	V	

Section II

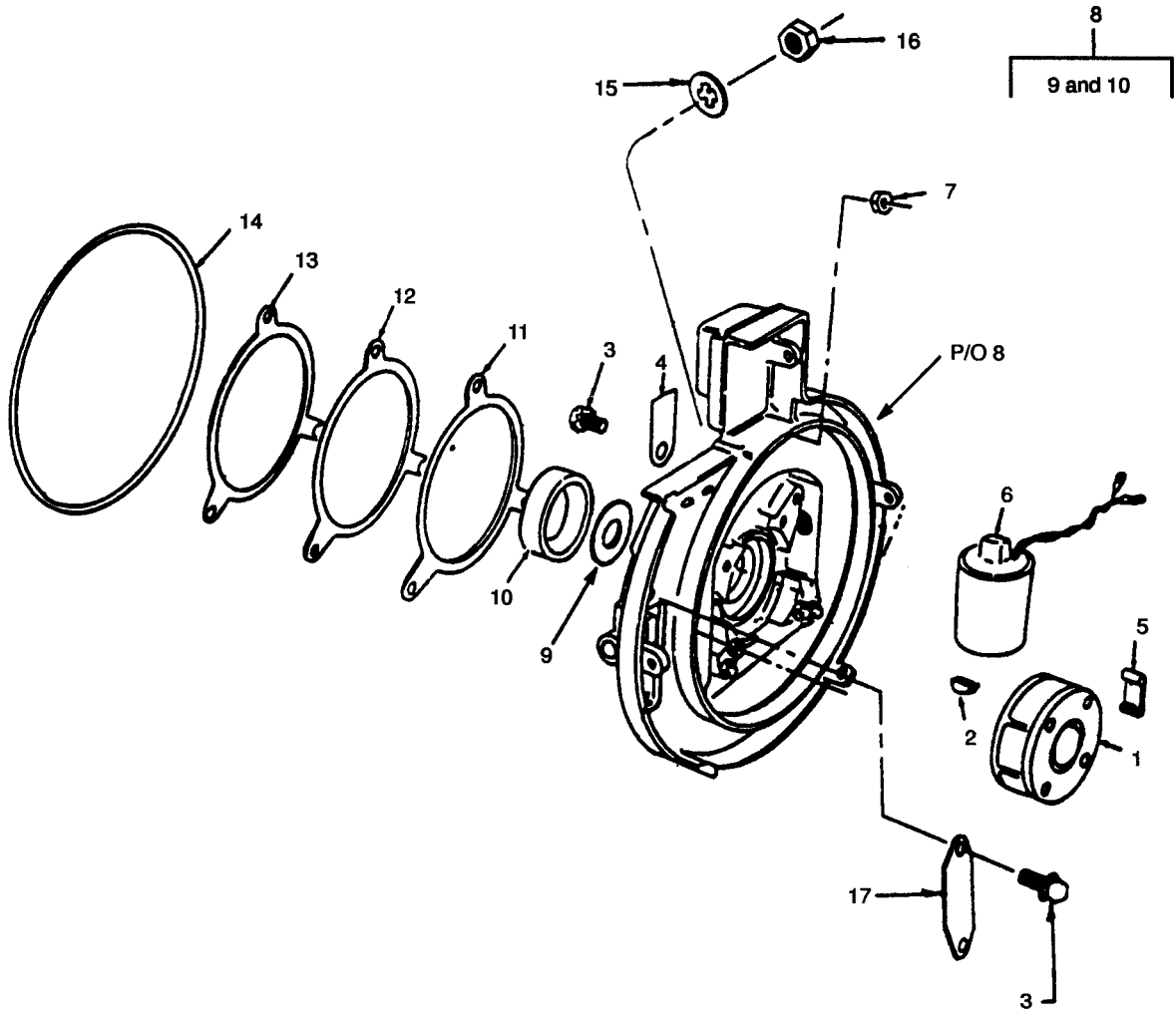


FIGURE 23. Cap Assembly, Bearing

SECTION II										
(1)	(2)					(3)	(4)	(5)	(6)	(7)
ITEM NO.	SMR CODE	a.	b.	c.	d.	CAGEC	PART NUMBER	DESCRIPTION AND USABLE ON CODE	QTY	USMC QTY/ EQUIP
	ARMY	AIR FORCE	NAVY	USMC						
GROUP 17 BEARING CAP ASSEMBLY										
FIG. 23 CAP ASSEMBLY, BEARING										
1	PAFZZ	PAFZZ	-	PAFZZ	97403	9787E59	MAGNET, ROTATING UOC: A, B, C	1		
1	PAFZZ	PAFZZ	-	PAFZZ	97403	13226E0939	MAGNET, ROTATING (PART OF KIT, P/N 13226E1700) UOC: D	1		
2	PAFZZ	PAFZZ	-	PAFZZ	96906	MS35756-6	KEY, WOODRUFF: ROTATING MAGNET	1		
3	PAFZZ	PAFZZ	-	PAFZZ	97403	13218E0504-51	SCREW, ASSEMBLED WITH LOCKWASHER: TIMING MARK COVER MTG	2		
4	XBOZZ	XBOZZ	-	XBOZZ	97403	9786E107-3	COVER, TIMING MARK	1		
5	PAOZZ	PAOZZ	-	PAOZZ	97403	9786E129-3	CLAMP, COIL	4		
6	PAOZZ	PAOZZ	-	PAOZZ	97403	9786E128	COIL ASSEMBLY, MAGNETIC UOC: A, B, C	2		
6	PAOZZ	PAOZZ	-	PAOZZ	97403	13226E0929	COIL ASSEMBLY, MAGNETIC (PART OF KIT, P/N 13226E1700) UOC: D	2		
7	PAFZZ	PAFZZ	-	PAFZZ	96906	MS21045L5	NUT, SELF-LOCKING	3		
8	KFFZZ	KFFZZ	-	KFFZZ	97403	9787E60	BEARING, CAP ASSEMBLY (PART OF KIT, P/N 13214E8216) UOC: A, B, C	1		
8	PAFZZ	PAFZZ	-	PAFZZ	97403	13226E1610	BEARING, CAP ASSEMBLY UOC: D	1		
9	PAFZZ	PAFZZ	-	PAFZZ	97403	13214E7063	SEAL, OIL: CRANKCASE (PART OF KITS, P/N 13214E8205 & 13214E8216)	1		
10	XAFZZ	XAFZZ	-	XAFZZ	97403	13214E7049-1	CUP, TAPERED, ROLLER BEARING	1		
11	PAFZZ	PAFZZ	-	PAFZZ	97403	13214E7060-1	SHIM; BEARING CAP 0.003 (PART OF KIT, P/N 13214E8216)	V		
12	PAFZZ	PAFZZ	-	PAFZZ	97403	13214E7060-2	SHIM; BEARING CAP 0.005 (PART OF KIT, P/N 13214E8216)	V		
13	PAFZZ	PAFZZ	-	PAFZZ	97403	13214E7060-3	SHIM; BEARING CAP 0.010 (PART OF KIT, P/N 13214E8216)	V		
14	PAFZZ	PAFZZ	-	PAFZZ	96906	MS28775-237	PACKING, PREFORMED: BEARING CAP MTG (PART OF KITS, P/N 13214E8616 & 13214E8216)	1		

SECTION II									
(1)	(2)			(3)	(4)	(5)	(6)	(7)	
ITEM NO.	SMR CODE		c.	d.	CAGEC	PART NUMBER	DESCRIPTION AND USABLE ON CODE	QTY	USMC QTY/ EQUIP
	a.	b.							
15	PAOZZ	PAOZZ	-	PAOZZ	97403	13218E0517-55	WASHER, LOCK, INTERNAL TOOTH	1	
16	PAOZZ	PAOZZ	-	PAOZZ	97403	13218E0320-53	NUT, LOW VOLTAGE CABLE MTG	1	
17	XDFZZ	XDFZZ	-	XDFZZ	97403	9787E41-2	COVER, HIGH TENSION	1	
	PAFZZ	PAFZZ	-	PAFZZ	97403	13214E8216	KIT, BEARING CAP UOC: A, B, C BEARING CAP ASSY (1) 23-8 OIL SEAL (1) 23-9 SHIM (V) 23-11 SHIM (V) 23-12 SHIM (V) 23-13 PACKING (1) 23-14	V	
	PAFZZ	PAFZZ	-	PAFZZ	97403	13226E1700	IGNITION KIT, BREAKERLESS SYSTEM CONTROL UNIT ASSY (1) 13-1 IGNITION ENCLOSURE (1) 13-2 IGNITION COVER (1) 13-3 IGNITION TRANSFORMER (2) 13-4 SCREW (7) 13-6 LOCKWASHER (7) 13-7 ELECTRONIC MODULE (1) 13-8 NUT (2) 13-9 PACKING (1) 13-10 CONNECTOR (1) 13-11 PACKING (2) 13-13 SCREW (6) 13-14 CAP (3) 13-15 CABLE (1) 14-1 CLAMP (2) 14-2 ROTATING MAGNET (1) 23-1 COIL ASSEMBLY (2) 23-6	V	

END OF FIGURE

Section II

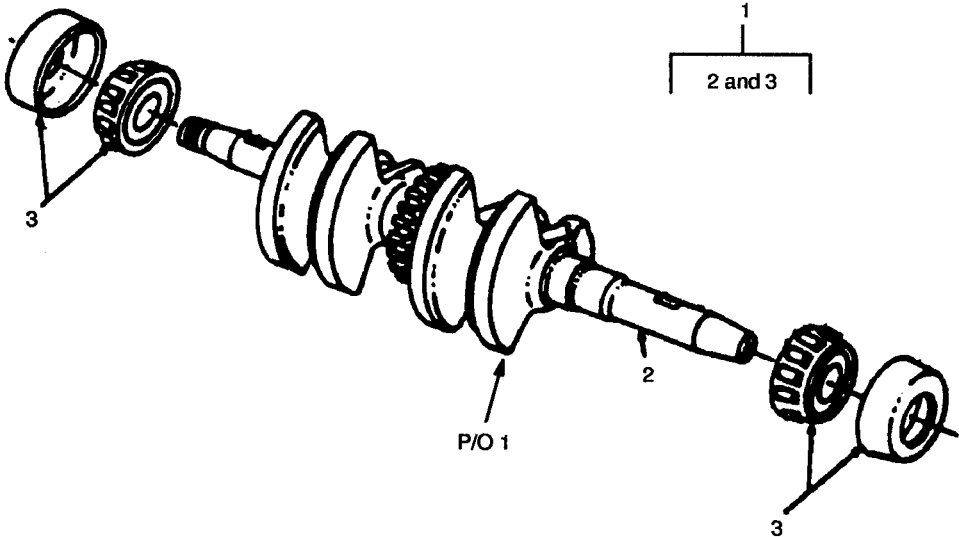


FIGURE 24. Crankshaft



SECTION II										
(1)	(2)					(3)	(4)	(5)	(6)	(7)
ITEM NO.	SMR CODE	a.	b.	c.	d.	CAGEC	PART NUMBER	DESCRIPTION AND USABLE ON CODE	QTY	USMC QTY/ EQUIP
	ARMY	AIR FORCE	NAVY	USMC						
GROUP 18 CRANKSHAFT ASSEMBLY										
FIG. 24 CRANKSHAFT										
1	PAHZZ	PAHZZ	-	PAHZZ	97403	9787E53	CRANKSHAFT ASSEMBLY	1		
2	XAHZZ	XAHZZ	-	XAHZZ	97403	9787E55	CRANKSHAFT	1		
3	PAHZZ	PAHZZ	-	PAHZZ	97403	13214E7049-2	BEARING, TAPERED, ROLLER, CONE	2		
END OF FIGURE										

Section II

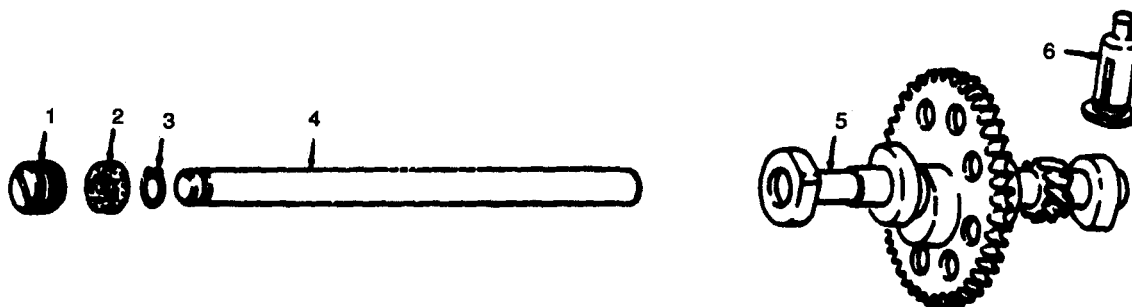


FIGURE 25. Camshaft Axle Valve Tappets

SECTION II									
(1)	(2)			(3)	(4)	(5)	(6)	(7)	
ITEM NO.	SMR CODE		c.	d.	CAGEC	PART NUMBER	DESCRIPTION AND USABLE ON CODE	QTY	USMC QTY/ EQUIP
	a.	b.							
	ARMY	AIR FORCE	NAVY	USMC					
GROUP 19 CAMSHAFT, AXLE, AND VALVE TAPPETS									
FIG. 25 CAMSHAFT, AXLE VALVE TAPPETS									
1	PAHZZ	PAHZZ	-	PAHZZ	97403	13215E3831	SETSCREW, SLOTTED: CAMSHAFT	1	
2	PAHZZ	PAHZZ	-	PAHZZ	97403	13206E1459	SEAL CAMSHAFT AXLE PLUG (PART OF KIT, P/N 13214E8186)	1	
3	PAHZZ	PAHZZ	-	PAHZZ	96906	MS16632-1037	RING, RETAINING: CAMSHAFT AXLE (PART OF KIT, P/N 13214E8184)	1	
4	KFHZZ	KFHZZ	-	KFHZZ	97403	978E52-1	AXLE, CAMSHAFT (PART OF KIT, P/N 13214E8184)	1	
5	KFHZZ	KFHZZ	-	KFHZZ	97403	9787E48	CAMSHAFT, ENGINE (PART OF KIT, P/N 13214E8184)	1	
6	PAHZZ	PAHZZ	-	PAHZZ	97403	9786E93-3	TAPPET, VALVE: INTAKE AND EXHAUST	2	
	PAHZZ	PAHZZ	-	PAHZZ	97403	13214E8184	KIT, CAMSHAFT AND AXLE RING, RETAINING (1) 25-3 AXLE (1) 25-4 CAMSHAFT (1) 25-5	V	
	PAFZZ	PAFZZ	-	PAFZZ	97403	13214E8186	KIT, ENGINE GASKET OVERHAUL GASKET (1) 4-5 GASKET (2) 5-7 GASKET (1) 7-5 GASKET (1) 10-4 GASKET (1) 10-13 GASKET (1) 10-15 GASKET (1) 11-7 GASKET (1) 11-7 GASKET (1) 12-7 GASKET (2) 16-3 GASKET (1) 18-5 GASKET (3) 20-3 GASKET (2) 20-6 PACKING (4) 21-17 GASKET (1) 21-20 PACKING (1) 23-14 SEAL (1) 25-2	V	
END OF FIGURE									

Section II

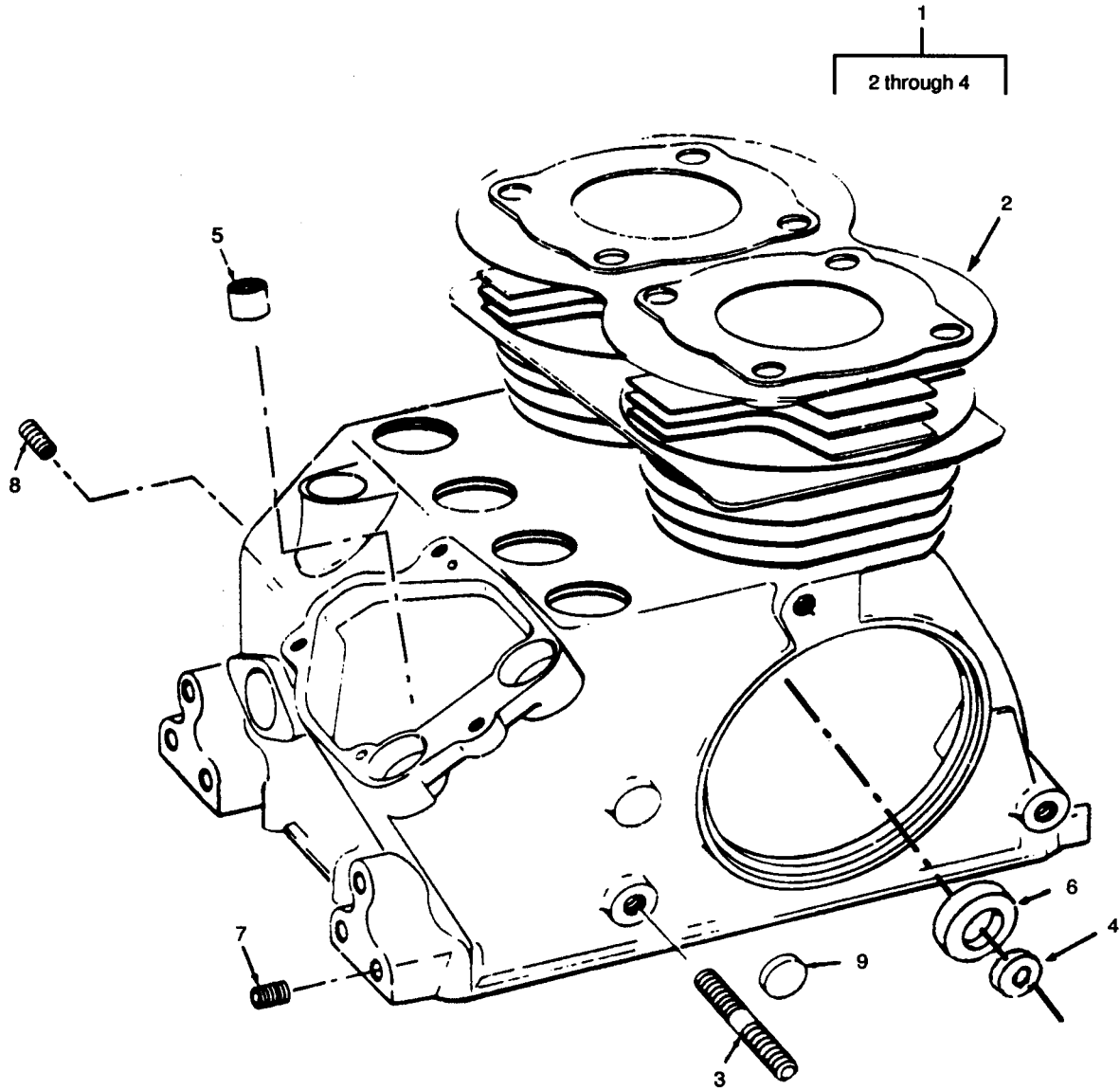


FIGURE 26. Crankcase

SECTION II										
(1)	(2)					(3)	(4)	(5)	(6)	(7)
ITEM NO.	SMR CODE	a.	b.	c.	d.	CAGEC	PART NUMBER	DESCRIPTION AND USABLE ON CODE	QTY	USMC QTY/ EQUIP
	ARMY									
GROUP 20 CRANKCASE ASSEMBLY										
FIG. 26 CRANKCASE										
1	XDHZZ	XDHZZ	-	XDHZZ	97403	9787E10		CRANKCASE AND OIL SEAL ASSEMBLY	1	
2	XAHZZ	XAHZZ	-	XAHZZ	97403	9787E11		CRANKCASE AND CAST IN PARTS	1	
3	PAFZZ	PAFZZ	-	PAFZZ	97403	9786E16-3		STUD, SELF-TOPPING: BEARING CAP	3	
4	KFFZZ	KFFZZ	-	KFFZZ	97403	13214E7063		SEAL, OIL CRANKSHAFT (PART OF KIT, P/N 13214E8205)	2	
5	PAFZZ	PAFZZ	-	PAFZZ	96906	MS17131-5		BEARING, NEEDLE	1	
6	XDFZZ	XDFZZ	-	XDFZZ	97403	13214E7049-1		CUP, TAPERED, ROLLER BEARING	1	
7	PAFZZ	PAFZZ	-	PAFZZ	96906	MS35914-109		INSERT, SCREW THREAD	12	
8	XDFZZ	XDFZZ	-	XDFZZ	96906	MS35914-112		INSERT, SCREW THREAD	4	
9	PAFZZ	PAFZZ	-	PAFZZ	96906	MS9380-06		PLUG, EXPANSION	1	
	PAFZZ	PAFZZ	-	PAFZZ	97403	13214E8205		KIT, OIL SEAL OIL SEAL (1) 23-9 OIL SEAL (1) 26-4	V	
END OF FIGURE										



TM 9-2805-257-24P

TO 38G2-103-4

SL-4-3521B

### SECTION III

NOT APPLICABLE





SECTION IV

CROSS-REFERENCE INDEXES

NATIONAL STOCK NUMBER INDEX

STOCK NUMBER	FIG.	ITEM	STOCK NUMBER	FIG.	ITEM
2805-00-010-0190	8	13	5365-00-281-3634	13	10
	9	19	5365-00-282-1633	8	16
5305-00-012-9085	20	4		9	15
2805-00-014-1698	20	5	5305-00-291-8680	2	15
5340-00-014-6979	8	8		7	3
	9	21		11	6
5310-00-017-8919	20	1	5340-00-332-1304	8	22
5305-00-017-9085	18	3		8	28
5340-00-050-1511	26	9	5305-00-363-3976	2	2
2910-00-064-5638	17	3		4	3
2805-00-067-8084	2	11		4	8
2805-00-067-8084	2	11		10	11
2805-00-067-8112	2	1		17	1
2805-00-067-8126	10	3	5305-00-363-3984	12	1
5365-00-070-1928	22	7	5305-00-363-3990	23	2
	22	16	5305-00-363-3991	10	5
4730-00-071-7890	4	1	5310-00-363-3992	21	7
2805-00-073-3052	17	6	3110-00-183-6715	26	5
5330-00-087-3612	1	2	4730-00-196-1479	1	3
3110-00-100-3698	24	3	5310-00-363-3993	2	13
5330-00-103-8793	11	7		11	2
2920-00-103-8812	11	1	5310-00-363-3994	12	2
2805-00-103-9028	2	4	5305-00-366-7763	17	2
2805-00-105-0167	7	4	5305-00-366-7766	2	22
5355-00-106-1804	17	4	5305-00-368-8233	5	1
9905-00-110-3473	2	21	2805-00-420-7746	21	
5330-00-114-2036	5	2	5305-00-427-0034	13	16
2990-00-126-8016	8	5	2940-00-435-7242	4	9
	9	5	2805-00-439-8116	22	4
5310-00-149-9130	21	2		22	13
6685-00-179-8632	4	10	6680-00-445-2882	6	1
3110-00-183-6715	26	5	5360-00-445-2921	21	11
4730-00-196-1479	1	3	2805-00-454-7512	19	6
3110-00-206-6608	8	32	5305-00-455-4893	21	8
5310-00-209-0786	2	8	2805-00-455-4919	8	21
	16	2	5305-00-455-8666	2	3
5365-00-215-7421	15	4	2805-00-455-9189	2	5
2920-00-225-4841	12		2805-00-476-6496	19	3
2940-00-225-4842	4	12	2805-00-484-3462	2	23
5305-00-227-1543	10	1	2805-00-488-0729	2	10
5315-00-234-7465	8	15	4730-00-503-0460	21	14
	9	8	2805-00-522-7386	21	10
5305-00-245-8424	4	11	5315-00-527-0604	8	19
2805-00-252-2012	21		5330-00-551-8441	13	13
4730-00-278-3462	5	6	5940-00-557-1629	2	27
4730-00-278-4740	15	3			

SECTION IV

CROSS-REFERENCE INDEXES

NATIONAL STOCK NUMBER INDEX

STOCK NUMBER	FIG.	ITEM	STOCK NUMBER	FIG.	ITEM
6145-00-570-0516	2	25	4730-00-797-4634	21	16
2805-00-575-3512	21		2805-00-797-4636	25	6
	25		2805-00-797-4638	21	18
5310-00-579-0079	13	7	5330-00-797-4639	25	2
5330-00-580-5939	8	7	5340-00-797-4641	23	5
	9	7	5330-00-797-4642	5	7
5310-00-584-5272	19	5	5306-00-797-5884	22	2
5365-00-584-6620	25	3	2990-00-797-5886	8	20
5330-00-608-6432	23	14	2990-00-797-5887	8	18
5315-00-616-4261	8	6	2920-00-797-5897	23	6
	9	6	2920-00-797-5898	23	1
5315-00-616-5514	19	7	5330-00-797-5905	10	15
	23	2	5330-00-797-5907	10	4
5307-00-637-6755	16	5	5340-00-797-5964	21	4
5930-00-655-1514	2	19	5330-00-799-5586	20	6
5365-00-720-8064	8	11	4820-00-799-5589	5	5
2805-00-727-2654	6	4	5310-00-807-1469	8	3
5330-00-756-1673	18	5		9	3
5310-00-768-0319	2	7	2920-00-810-7082	3	3
	16	1	5940-00-813-0698	2	26
5340-00-773-6219	8	1	5330-00-819-8733	4	5
	9	1		16	3
5340-00-777-5703	3	1	5330-00-819-8734	21	20
2805-00-788-0420	24	1	5315-00-821-1225	9	28
2805-00-788-0423	22	5	5310-00-823-8804	13	17
2805-00-788-0425	21	19	2805-00-832-5672	25	
4710-00-788-0429	18	1	2990-00-832-5674	8	
2920-00-788-0431	12	3	2805-00-832-5677	26	
2990-00-788-0433	8	14	2805-00-832-8022	23	
5995-00-788-0434	2	18	5330-00-840-6269	6	2
4730-00-788-0441	7	1	5310-00-857-5559	21	1
5310-00-788-0443	19	4		23	7
2805-00-788-1527	22	3	2910-00-867-8730	4	4
3040-00-795-9581	21	5	2805-00-867-8736	5	3
5365-00-797-3499	23	13	5360-00-867-8788	17	5
5330-00-797-3502	23	11	2920-00-867-8794	3	2
5330-00-797-3506	20	3	2805-00-889-5354	2	17
5330-00-797-3513	12	7	2910-00-905-9792	1	1
5330-00-797-3515	7	5	2910-00-917-4735	16	
5360-00-797-3517	8	4	2805-00-929-3472	10	
5305-00-797-3535	25	1	4710-00-930-9425	15	1
2805-00-797-3536	26	3	5310-00-934-9737	9	20
5995-00-797-4619	11	4	5310-00-934-9739	8	10
5330-00-797-4630	23	12	2805-00-937-0949	22	
2805-00-797-4633	20	2			

SECTION IV

CROSS-REFERENCE INDEXES

NATIONAL STOCK NUMBER INDEX

STOCK NUMBER	FIG.	ITEM	STOCK NUMBER	FIG.	ITEM
2805-00-953-1563	4		5305-01-184-6181	19	2
5305-00-956-4470	13	14	2920-01-201-7370	13	1
5340-00-958-8457	4	7	2805-01-203-4361	21	6
5310-00-962-7709	23	16	5325-01-203-4923	2	20
2990-00-972-7950	19	1	3110-01-206-6608	9	27
5330-00-977-7933	7	2	5305-01-207-8288	12	6
5305-00-984-4984	13	6	5305-01-229-6330	2	9
5340-00-990-7610	14	2	2990-01-237-0619	9	14
5340-00-994-1632	26	7	2990-01-237-0620	9	18
2805-01-093-2392	22	6	2920-01-237-3669	23	8
	22	15	5330-01-237-3715	23	9
2805-01-102-3920	2	6	2990-01-238-3807	9	9
3040-01-109-3981	10	7	2990-01-239-8987	9	17
2920-01-131-8253	23	6	5360-01-240-2053	9	4
2920-01-133-6312	23	1	2805-01-245-6935	2	12
5995-01-137-5494	2	24	2805-01-250-0039	9	2
5310-01-137-5497	13	9	4730-01-317-8844	18	2
2920-01-137-6822	13	8	5310-01-333-2847	15	5
5330-01-145-5161	11	5			
2910-01-173-2124	18	4			
2920-01-178-4979	23				
6150-01-182-1984	14	1			

SECTION IV

CROSS-REFERENCE INDEXES

CAGEC	PART NUMBER	PART NUMBER INDEX STOCK NUMBER	FIG.	ITEM
88044	AN125964	5307-00-637-6755	16	5
81349	M13486-1-2	6145-00-570-0516	2	25
96906	MS16555-329	5340-00-332-1304	8	28
			9	28
96906	MS16562-28	5315-00-616-4261	8	6
			9	6
96906	MS16562-40	5315-00-527-0604	8	19
96906	MS16624-1025	5365-00-720-8064	8	11
96906	MS16624-3025		8	31
			9	26
96906	MS16624-3040	5365-00-070-1928	22	7
			22	16
96906	MS16625-3062		8	29
			9	24
96906	MS16632-1037	5365-00-584-6620	25	3
96906	MS16633-1018	5365-00-282-1633	8	16
			9	15
96906	MS16633-3012		9	10
96906	MS17525	5315-00-234-7465	8	15
			9	8
96906	MS17131-5	3110-00-183-6715	26	5
96906	MS20002-6	5310-00-149-9130	21	2
96906	MS21042-5	5310-00-807-1469	8	3
			9	3
96906	MS21045L5	5310-00-857-5559	21	1
			23	7
96906	MS21333-66	5340-00-990-7610	14	2
96906	MS21333-78	5340-00-958-8457	4	7
96906	MS21334-9	5340-00-777-5703	3	1
96906	MS25036-101	5940-00-813-0698	2	26
96906	MS25036-149	5940-00-557-1629	2	27
96906	MS27183-9	5310-00-823-8804	13	17
96906	MS27769-2	4730-00-278-3462	5	6
96906	MS28775-014	5365-00-281-3634	13	10
96906	MS28775-019	5330-00-551-8441	13	13
96906	MS28775-237	5330-00-608-6432	23	14
96906	MS29561-009	5330-00-580-5939	8	7
			9	7
96906	MS29561-019	5330-00-840-6269	6	2
96906	MS3212-25	5305-00-956-4470	13	14
96906	MS35058-22	5930-00-655-1514	2	19
96906	MS35206-227	5305-00-984-4984	13	6
96906	MS35333-37	5310-00-579-0079	13	7
96906	MS35335-33	5310-00-209-0786	2	8
			16	2
96906	MS35469-32	5310-00-934-9739	8	10

SECTION IV

CROSS-REFERENCE INDEXES

CAGEC	PART NUMBER	PART NUMBER INDEX STOCK NUMBER	FIG.	ITEM
96906	MS35469-242	5310-00-934-9737	9	20
96906	MS35756-6	5315-00-616-5514	19	7
			23	2
96906	MS35914-109	5340-00-994-1632	26	7
96906	MS35914-112		26	8
96906	MS39171-14	4730-00-278-4740	15	3
96906	MS51009-1	2920-00-810-7082	3	3
96906	MS51086-1	2910-00-905-9792	1	1
96906	MS51091-4	5330-00-087-3612	1	2
96906	MS51849-33	5305-00-227-1543	10	1
96906	MS51968-2	5310-00-768-0319	2	7
			16	1
96906	MS90367-10R		13	15
96906	MS9380-06	5340-00-050-1511	26	9
00756	NAS1598-3Y	5330-01-145-5161	11	5
97403	13206E0102		22	9
			22	18
97403	13206E0110	2805-00-788-0425	21	19
97403	13206E0248	5305-00-245-8424	4	11
97403	13206E0401	5330-00-756-1673	18	5
97403	13206E0434	5330-00-103-8793	11	7
97403	13206E0444-3	5310-00-363-3994	12	2
97403	13206E0820	6685-00-179-8632	4	10
97403	13206E1400	2920-00-103-8812	11	1
97403	13206E1405	5355-00-106-1804	17	4
97403	13206E1409	5360-00-867-8788	17	5
97403	13206E1413	5305-00-366-7763	17	2
97403	13206E1420	5995-00-788-0434	2	18
97403	13206E1430	2910-00-064-5638	17	3
97403	13206E1442	3110-00-206-6608	8	32
			9	27
97403	13206E1459	5330-00-797-4639	25	2
97403	13206E1489	2805-00-073-3052	17	6
97403	13211E8449	2940-00-225-4842	4	12
97403	13212E3762-2		12	5
97403	13214E7049-1		23	10
			26	6
97403	13214E7049-2		24	3
97403	13214E7052	2910-00-867-8730	4	4
97403	13214E7056		8	2
97403	13214E7057	2920-00-788-0431	12	3
97403	13214E7059	4710-00-930-9425	15	1
97403	13214E7060-1	5330-00-797-3502	23	11
97403	13214E7060-2	5330-00-797-4630	23	12
97403	13214E7060-3	5365-00-797-3499	23	13

SECTION IV

CROSS-REFERENCE INDEXES

CAGEC	PART NUMBER	PART NUMBER INDEX STOCK NUMBER	FIG.	ITEM
97403	13214E7063	5330-01-237-3715	23	9
			26	4
97403	13214E7064		22	1
97403	13214E7066	3040-01-109-3981	10	7
97403	13214E8180	2920-00-225-4841	12	
97403	13214E8181	2805-00-575-3512	21	
97403	13214E8184		25	
97403	13214E8186	2805-00-832-5672	25	
97403	13214E8187	2805-00-953-1563	4	
97403	13214E8188	2805-00-420-7746	21	
97403	13214E8189	2805-00-929-3472	10	
97403	13214E8191	2905-00-937-0949	22	
97403	13214E8192	2910-00-917-4735	16	
97403	13214E8199	2805-00-252-2012	21	
97403	13214E8205	2805-00-832-5677	26	
97403	13214E8216	2805-00-832-8022	23	
97403	13214E8217	2990-00-832-5674	8	
97403	13214E9382		21	13
97403	13214E9385	5340-00-332-1304	8	22
97403	13214E9387		8	26
97403	13214E9389-2		4	2
97403	13214E9389-3		4	6
97403	13214E9570	4730-00-788-0441	7	1
97403	13215E3815	5995-00-797-4619	11	4
97403	13215E3827	2940-00-435-7242	4	9
97403	13215E3831	5305-00-797-3535	25	1
97403	13215E3832	5305-00-363-3991	10	5
97403	13215E3835		10	9
97403	13215E3836		10	8
97403	13215E3837		16	6
97403	13215E3857-6		10	2
97403	13215E3857-10		5	2
97403	13215E3857-14	5330-00-972-7933	7	2
97403	13215E4163-4		22	19
97403	13215E4180		21	15
97403	13215E4181		21	3
97403	13218E0135-3	4730-00-503-0460	21	14
97403	13218E0145-3		15	2
97403	13218E0170-30	4730-01-317-8844	18	2
97403	13218E0250-43	4730-00-071-7890	4	1
97403	13218E0320-32	5310-00-363-3992	21	7
97403	13218E0320-53	5310-00-962-7709	23	16
97403	13218E0320-75	5310-00-788-0443	19	4
97403	13218E0320-249	5310-00-363-3993	2	13
			11	2

SECTION IV

CROSS-REFERENCE INDEXES

CAGEC	PART NUMBER	PART NUMBER INDEX STOCK NUMBER	FIG.	ITEM
97403	13218E0504	5305-00-427-0034	13	16
97403	13218E0504-32	5305-00-363-3984	12	1
97403	13218E0504-51	5305-00-363-3990	23	3
97403	13218E0504-53		2	16
97403	13218E0504-56	5305-00-291-8680	2	15
			7	3
			11	6
97403	13218E0504-59	5305-01-207-8288	12	6
97403	13218E0504-67	5305-00-363-3976	2	2
			4	3
			4	8
			10	11
			17	1
97403	13218E0504-68	5305-00-017-9085	18	3
			20	4
97403	13218E0505-56	5305-00-455-8666	2	3
97403	13218E0517-51		2	14
			11	3
97403	13218E0517-55		23	15
97403	13218E0519-3		10	6
97403	13218E0519-32	5340-00-014-6979	8	9
			9	21
97403	13218E0519-42	5305-00-584-5272	19	5
97403	13218E0526-109	5301-00-368-8223	5	1
97403	13218E0526-292	5301-01-229-6330	2	9
97403	13218E0549-34	5305-00-366-7766	2	22
97403	13218E0549-46	5305-01-184-6181	19	2
97403	13222E6723	2805-01-093-2392	22	6
97403	13226E0929	2920-01-131-8253	23	6
97403	13226E0933	5995-01-137-5494	2	24
97403	13226E0939	2920-01-133-6312	23	1
97403	13226E1610	2920-01-237-3669	23	8
97403	13226E1618-2		13	5
			13	12
97403	13226E1631		13	2
97403	13226E1632-1		13	4
97403	13226E1633		13	8
97403	13226E1634		13	11
97403	13226E1643		14	1
97403	13226E1645	2920-01-201-7370	13	1
97403	13226E1647		8	30
			9	25
97403	13226E1648		8	27
			9	29
97403	13226E1649-2		13	2

SECTION IV

CROSS-REFERENCE INDEXES

CAGEC	PART NUMBER	PART NUMBER INDEX STOCK NUMBER	FIG.	ITEM
97403	13226E1650		8	26
			9	23
97403	13226E1700	2920-01-178-4979	23	
97403	13226E2230-2	2910-01-173-2124	18	4
97403	13226E6178		11	1
97403	13226E6723	2805-01-093-2392	22	15
97403	13226E8001		22	14
97403	13226E8002		22	10
97403	13226E8003		22	11
97403	13226E8004		22	12
97403	13226E8006	2990-01-239-8987	9	17
97403	13226E8007	5360-01-240-2053	9	4
97403	13226E8008	2990-01-238-3807	9	9
97403	13226E8009		9	12
97403	13226E8011	2990-01-237-0619	9	14
97403	13226E8014		9	13
97403	13226E8015	2990-01-237-0620	9	18
97403	13226E9686	2805-01-250-0039	9	2
97403	13227E9891-4	2920-00-867-8794	3	2
97403	13227E9891-8		6	3
44949	505-0104	4730-00-196-1479	1	3
97403	9786E16-3	2805-00-797-3556	26	3
97403	9786E17A	2805-00-727-2654	6	4
97403	9786E17-1		6	5
97403	9786E17-2		6	6
97403	9786E26-2	5330-00-819-8733	4	5
			16	3
97403	9786E26-4	5330-00-799-5586	20	6
97403	9786E27		16	4
97403	9786E43-1		16	6
97403	9786E44	2805-00-867-8736	5	3
97403	9786E44-2	5330-00-797-4642	5	7
97403	9786E45		5	4
97403	9786E46	4820-00-799-5589	5	5
97403	9786E50-1	5310-00-017-8919	20	1
97403	9786E50-2	5330-00-797-3506	20	3
97403	9786E53-1	9905-00-110-3473	2	21
97403	9786E55		2	11
97403	9786E56	2805-00-067-8112	2	1
97403	9786E60-2	5310-01-333-2847	15	5
97403	9786E60-3	5365-00-215-7421	15	4
97403	9786E63-1		10	12
97403	9786E63-2	2805-00-067-8126	10	3
97403	9786E64-1		10	10
97403	9786E64-2		10	14



SECTION IV

CROSS-REFERENCE INDEXES

CAGEC	PART NUMBER	PART NUMBER INDEX STOCK NUMBER	FIG.	ITEM
97403	9786E64-3	2805-00-010-0190	8	13
			9	19
97403	9786E64-6	5330-00-797-5907	10	4
97403	9786E64A2	5340-00-014-6979	8	8
			9	22
97403	9786E65-1	5330-00-797-3515	12	7
97403	9786E65-3		10	13
97403	9786E65-4	5330-00-797-5905	10	15
97403	9786E65-5	5340-00-773-6219	8	1
97405	9786E65-5	5340-00-773-6219	9	1
97403	9786E70		12	4
97403	9786E75-1		8	12
97403	9786E75-2		8	17
			9	16
97403	9786E75-3	5360-00-797-3517	8	4
97403	9786E75-4	2990-00-788-0433	8	14
97403	9786E76A	2990-00-126-8016	8	5
			9	5
97403	9786E76A2	2990-00-797-5886	8	20
97403	9786E81	2990-00-797-5887	8	18
97403	9786E83	2805-00-455-4914	8	21
97403	9786E83-2		9	11
			8	23
97403	9786E83-3		8	25
97403	9786E84		8	24
97403	9786E92-3	5330-00-797-3510	21	17
97403	9786E93-2	2805-00-797-4638	21	18
97403	9786E93-3	2805-00-797-4636	25	6
97403	9786E93-4	4730-00-797-4634	21	16
97403	9786E98-1	5340-00-797-5964	21	4
97403	9786E98-2	5360-00-445-2921	21	11
97403	9786E98-3	3040-00-795-9581	21	5
97403	9786E100-1		21	12
97403	9786E100-2		21	9
97403	9786E101-2	5305-00-455-4893	21	8
97403	9786E101-3	2805-01-203-4361	21	6
97403	9786E102	2805-00-522-7386	21	10
97403	9786E107-1	5330-00-819-8734	21	20
97403	9786E107-3		23	4
97403	9786E111-2		22	8
			22	17
97403	9786E112	2805-00-788-0423	22	5
97403	9786E113-1	2805-00-788-1527	22	3
97403	9786E113-2	2805-00-439-8116	22	22
			22	13

SECTION IV

CROSS-REFERENCE INDEXES

CAGEC	PART NUMBER	PART NUMBER INDEX STOCK NUMBER	FIG.	ITEM
97403	9786E113-3	5306-00-797-5884	22	2
97403	9786E114	6680-00-445-2882	6	1
97403	9786E114-2		6	3
97403	9786E119-1	2805-00-476-6496	19	3
97403	9786E121	2990-00-972-7950	19	1
97403	9786E128	2920-00-797-5897	23	6
97403	9786E129-3	5340-00-797-4641	23	5
97403	9787E10		26	1
97403	9787E11		26	2
97403	9787E20	2805-00-014-1698	20	5
97403	9787E23	2805-00-797-4633	20	3
97403	9787E24	2805-00-889-5334	2	17
97403	9787E26-2	2805-00-455-9189	2	5
97403	9787E29	2805-01-245-6935	2	12
97403	9787E31	2805-01-102-3920	2	6
97403	9787E32	2805-00-103-9028	2	4
97403	9787E34	2805-00-488-0729	2	10
97403	9787E35	2805-00-484-3462	2	23
97403	9787E40-2	5325-01-203-4923	2	20
97403	9787E41-2		23	17
97403	9787E42-1	4710-00-788-0429	18	1
97403	9787E44	2805-00-105-0167	7	4
97403	9787E46	5330-00-797-3515	7	5
97403	9787E48		25	5
97403	9787E52-1		25	4
97403	9787E53	2805-00-788-0420	24	1
97403	9787E55		24	2
97403	9787E57	2805-00-454-7512	19	6
97403	9787E59	2920-00-797-5898	23	1
97403	9787E60		23	8

SECTION IV CROSS-REFERENCE INDEXES

FIG.	ITEM	FIGURE AND ITEM NUMBER INDEX		PART NUMBER
		STOCK NUMBER	CAGEC	
1	1	2910-00-905-9792	96906	MS51086-1
1	2	5330-00-087-3612	96906	MS51091-4
1	3	4730-00-196-1479	44949	505-0104
2	1	2805-00-067-8112	97403	9786E56
2	2	5305-00-363-3976	97403	13218E0504-67
2	3	5305-00-455-8666	97403	13218E0505-56
2	4	2805-00-103-9028	97403	9787E32
2	5	2805-00-455-9189	97403	9787E26-2
2	6	2805-01-102-3920	97403	9787E31
2	7	5310-00-768-0319	96906	MS51968-2
2	8	5310-00-209-0786	96906	MS35335-33
2	9	5305-01-229-6330	97403	13218E0526-292
2	10	2805-00-488-0729	97403	9787E34
2	11	2805-00-067-8084	97403	9786E55
2	12	2805-01-245-6935	97403	9787E29
2	13	5310-00-363-3993	97403	13218E0320-249
2	14		97403	13218E0517-51
2	15	5305-00-291-8680	97403	13218E0504-56
2	16		97403	13218E0504-53
2	17	2805-00-889-5354	97403	9787E24
2	18	5995-00-788-0434	97403	13206E1420
2	19	5930-00-655-1514	96906	MS35058-22
2	20	5325-01-203-4923	97403	9787E40-2
2	21	9905-00-110-3473	97403	9786E53-1
2	22	5305-00-366-7766	97403	13218E0549-34
2	23	2805-00-484-3462	97403	9787E35
2	24	5995-01-137-5494	97403	13226E0933
2	25	6145-00-570-0516	81349	M13486-1-2
2	26	5940-00-813-0698	96906	MS25036-101
2	27	5940-00-557-1629	96906	MS25036-149
3	1	5340-00-777-5703	96906	MS21334-9
3	2		97403	13227E9891-8
3	2	2920-00-867-8794	97403	13227E9891-4
3	3	2920-00-810-7082	96906	MS51009-1
4	1	4730-00-071-7890	97403	13218E0250-43
4	2		97403	13214E9389-2
4	3	5305-00-363-3976	97403	13218E0504-67
4	4	2910-00-867-8730	97403	13214E7052
4	5	5330-00-819-8733	97403	9786E26-2
4	6		97403	13214E9389-3
4	7	5340-00-958-8457	96906	MS21333-78
4	8	5305-00-363-3976	97403	13218E0504-67
4	9	2940-00-435-7242	97403	13215E3827
4	10	6685-00-179-8632	97403	13206E0820

SECTION IV CROSS-REFERENCE INDEXES

FIG.	ITEM	FIGURE AND ITEM NUMBER INDEX STOCK NUMBER	CAGEC	PART NUMBER
4	11	5305-00-245-8424	97403	13206E0248
4	12	2940-00-225-4842	97403	13211E8449
4		2805-00-953-1563	97403	13214E8187
5	1	5305-00-368-8223	97403	13218E0526-109
5	2	5330-00-114-2036	97403	13215E3857-10
5	3	2805-00-867-8736	97403	9786E49
5	4		97403	9786E45
5	5	4820-00-799-5589	97403	9786E46
5	6	4730-00-278-3462	96906	MS27769-2
5	7	5330-00-797-4642	97403	9786E44-2
6	1	6680-00-445-2882	97403	9786E114
6	2	5330-00-840-6269	96906	MS29561-019
6	3		97403	9786E114-2
6	4	2805-00-727-2654	97403	9786E17A
6	5		97403	9786E17-1
6	6		97403	9786E17-2
7	1	4730-00-788-0441	97403	13214E9570
7	2	5330-00-977-7933	97403	13215E3857-14
7	3	5305-00-291-8680	97403	13218E0504-56
7	4	2805-00-105-0167	97403	9787E44
7	5	5330-00-797-3515	97403	9787E46
8	1	5340-00-773-6219	97403	9786E65-5
8			97403	13214E7056
8	3	5310-00-807-1469	96906	MS21042-5
8	4	5360-00-797-3517	97403	9786E75-3
8	5	2990-00-126-8016	97403	9786E76A
8	6	5315-00-616-4261	96906	MS16562-28
8	7	5330-00-580-5939	96906	MS29561-009
8	8	5340-00-014-6979	97403	9786E64A2
8	9		97403	13218E0519-32
8	10	5310-00-934-9739	96906	MS35469-32
8	11	5365-00-720-8064	96906	MS16624-1025
8	12		97403	9786E75-1
8	13	2805-00-010-0190	97403	9786E64-3
8	14	2990-00-788-0433	97403	9786E75-4
8	15	5315-00-234-7465	96906	MS17525
8	16	5365-00-282-1633	96906	MS16633-1018
8	17		97403	9786E75-2
8	18	2990-00-797-5887	97403	9786E81
8	19	5315-00-527-0604	96906	MS16562-40
8	20	2990-00-797-5886	97403	9786E76A2
8	21	2805-00-455-4914	97403	9786E83
8	22	5340-00-332-1304	97403	13214E9385
8	23		97403	9786E83-2

SECTION IV CROSS-REFERENCE INDEXES

		FIGURE AND ITEM NUMBER INDEX		
FIG.	ITEM	STOCK NUMBER	CAGEC	PART NUMBER
8	24		97403	9786E84
8	25		97403	9786E83-3
8	26		97403	13214E9387
8	26		97403	13226E1650
8	27		97403	13226E1648
8	28	5340-00-332-1304	96906	MS16555-329
8	29		96906	MS16625-3062
8	30		97403	13226E1647
8	31		96906	MS16624-3025
8	32	3110-00-206-6608	97403	13206E1442
8		2990-00-832-5674	97403	13214E8217
9	1	5340-00-773-6219	97403	9786E65-5
9	2	2805-01-250-0039	97403	13227E9686
9	3	5310-00-807-1469	96906	MS21042-5
9	4	5360-01-240-2053	97403	13226E8007
9	5	2990-00-126-8016	97403	9786E76A
9	6	5315-00-616-4261	96906	MS16562-28
9	7	5330-00-580-5939	96906	MS29561-009
9	8	5315-00-234-7465	96906	MS171525
9	9	2990-01-238-3807	97403	13226E8008
9	10		96906	MS16633-3012
9	11		97403	9786E83-2
9	12		97403	13226E8009
9	13		97403	13226E8014
9	14	2990-01-237-0619	97403	13226E8011
9	15	5365-00-282-1633	96906	MS16633-1018
9	16		97403	9786E75-2
9	17	2990-01-239-8987	97403	13226E8006
9	18	2990-01-237-0620	97403	13226E8015
9	19	2805-00-010-0190	97403	9786E64-3
9	20	5310-00-934-9737	96906	MS35469-242
9	21	5340-00-014-6979	97403	13218E0519-32
9	22		97403	9786E64A2
9	23		97403	13226E1650
9	24		96906	MS16625-3062
9	25		97403	13226E1647
9	26		96906	MS16624-3025
9	27	3110-01-206-6608	97403	13206E1442
9	28	5315-00-821-1225	96906	MS16555-329
9	29		97403	13226E1648
10	1	5305-00-227-1543	96906	MS51849-33
10	2		97403	13215E3857-6
10	3	2805-00-067-8126	97403	9786E63-2

SECTION IV CROSS-REFERENCE INDEXES

FIG.	ITEM	FIGURE AND ITEM NUMBER INDEX		PART NUMBER
		STOCK NUMBER	CAGEC	
10	4	5330-00-797-5907	97403	9786E64-6
10	5	5305-00-363-3991	97403	13215E3832
10	6		97403	13218E0519-3
10	7	3040-01-109-3981	97403	13214E7066
10	8		97403	13215E3836
10	9		97403	13215E3835
10	10		97403	9786E64-1
10	11	5305-00-363-3976	97403	13218E0504-67
10	12		97403	9786E63-1
10	13		97403	9786E65-3
10	14		97403	9786E64-2
10	15	5330-00-797-5905	97403	9786E65-4
10		2805-00-929-3472	97403	13214E8189
11	1	2920-00-103-8812	97403	13206E1400
11	1		97403	13226E6178
11	2	5310-00-363-3993	97403	13218E0320-249
11	3		97403	13218E0517-51
11	4	5995-00-797-4619	97403	13215E3815
11	5	5330-01-145-5161	00756	NAS1598-3Y
11	6	5305-00-291-8680	97403	13218E0504-56
11	7	5330-00-103-8793	97403	13206E0434
12	1	5305-00-363-3984	97403	13218E0504-32
12	2	5310-00-363-3994	97403	13206E0444-3
12	3	2920-00-788-0431	97403	13214E7057
12	4		97403	9786E70
12	5		97403	13212E3762-2
12	6	5305-01-207-8288	97403	13218E0504-59
12	7	5330-00-797-3513	97403	9786E65-1
12		2920-00-225-4841	97403	13214E8180
13	1	2920-01-201-7370	97403	13226E1645
13	2		97403	13226E1631
13	3		97403	13226E1649-2
13	4		97403	13226E1632-1
13	5		97403	13226E1618-2
13	6	5305-00-984-4984	96906	MS35206-227
13	7	5310-00-579-0079	96906	MS35333-37
13	8	2920-01-137-6822	97403	13226E1633
13	9	5310-01-137-5497	97403	13226E1613
13	10	5365-00-281-3634	96906	MS28775-014
13	11		97403	13226E1634
13	12		97403	13226E1618-2
13	13	5330-00-551-8441	96906	MS28775-019
13	14	5305-00-956-4470	96906	MS3212-25
13	15		96906	MS90367-10R

SECTION IV CROSS-REFERENCE INDEXES

FIG.	ITEM	FIGURE AND ITEM NUMBER INDEX		
		STOCK NUMBER	CAGEC	PART NUMBER
13	16	5305-00-427-0034	97403	13218E0504-70
13	17	5310-00-823-8804	96906	MS27183-9
14	1	6150-01-182-1984	97403	13226E1643
14	2	5340-00-990-7610	96906	MS21333-66
15	1	4710-00-930-9425	97403	13214E7059
15	2		97403	13218E0145-3
15	3	4730-00-278-4740	96906	MS39171-14
15	4	5365-00-215-7421	97403	9786E60-3
15	5	5310-01-333-2847	97403	9786E60-2
16	1	5310-00-768-0319	96906	MS51968-2
16	2	5310-00-209-0786	96906	MS35335-33
16	3	5330-00-819-8733	97403	9786E26-2
16	4		97403	9786E27
16	5	5307-00-637-6755	88044	AN125964
16	6		97403	9786E43-1
16	6		97403	13215E3837
16		2910-00-917-4735	97403	13214E8192
17	1	5305-00-363-3976	97403	13218E0504-67
17	2	5305-00-366-7763	97403	13206E1413
17	3	2910-00-064-5638	97403	13206E1430
17	4	5355-00-106-1804	97403	13206E1405
17	5	5360-00-867-8788	97403	13206E1409
17	6		97403	13206E1489
18	1	4710-00-788-0429	97403	9787E42-1
18	2	4730-01-317-8844	97403	13218E0170-30
18	3	5305-00-017-9085	97403	13218E0504-68
18	4	2910-01-173-2124	97403	13226E2230-2
18	5	5330-00-756-1673	97403	13206E0401
19	1	2990-00-972-7950	97403	9786E121
19	2	5305-01-184-6181	97403	13218E0549-46
19	3	2805-00-476-6496	97403	9786E119-1
19	4	5310-00-788-0443	97403	13218E0320-75
19	5	5310-00-584-5272	97403	13218E0519-42
19	6	2805-00-454-7512	97403	9787E57
19	7	5315-00-616-5514	96906	MS35756-6
20	1	5310-00-017-8919	97403	9786E50-1
20	2	2805-00-797-4633	97403	9787E23
20	3	5330-00-797-3506	97403	9786E50-2
20	4	5305-00-017-9085	97403	13218E0504-68
20	5	2805-00-014-1698	97403	9787E20
20	6	5330-00-799-5586	97403	9786E26-4
21	1	5310-00-857-5559	96906	MS21045L5
21	2	5310-00-149-9130	96906	MS20002-6
21	3		97403	13215E4181

SECTION IV CROSS-REFERENCE INDEXES

FIG.	ITEM	FIGURE AND ITEM NUMBER INDEX STOCK NUMBER	CAGEC	PART NUMBER
21	6	2805-01-203-4361	97403	9786E101-3
21	7	5310-00-363-3992	97403	13218E0320-32
21	8	5305-00-455-4893	97403	9786E101-2
21	9		97403	9786E100-2
21	10	2805-00-522-7386	97403	9786E102
21	11	5360-00-445-2921	97403	9786E98-2
21	12		97403	9786E100-1
21	13		97403	13214E9382
21	14	4730-00-503-0460	97403	13218E0135-3
21	15		97403	13215E4180
21	16	4730-00-797-4634	97403	9786E93-4
21	17	5330-00-797-3510	97403	9786E92-3
21	18	2805-00-797-4638	97403	9786E93-2
21	19	2805-00-788-0425	97403	13206E0110
21	20	5330-00-819-8734	97403	9786E107-1
21		2805-00-575-3512	97403	13214E8181
21		2805-00-420-7746	97403	13214E8188
21		2805-00-252-2012	97403	13214E8199
22	1		97403	13214E7064
22	2	5306-00-797-5884	97403	9786E113-3
22	3	2805-00-788-1527	97403	9786E113-1
22	4	2805-00-439-8116	97403	9786E113-2
22	5	2805-00-788-0423	97403	9786E112
22	6	2805-01-093-2392	97403	13222E6723
22	7	5365-00-070-1928	96906	MS16624-3040
22	8		97403	9786E111-2
22	9		97403	13206E0102
22	10		97403	13226E8002
22	11		97403	13226E8003
22	12		97403	13226E8004
22	13	2805-00-439-8116	97403	9786E113-2
22	14		97403	13226E8001
22	15	2805-01-093-2392	97403	13222E6723
22	16	5365-00-070-1928	96906	MS16624-3040
22	17		97403	9786E111-2
22	18		97403	13206E0102
22	19		97403	13215E4163-4
22		2805-00-937-0949	97403	13214E8191
23	1	2920-00-797-5898	97403	9787E59
23	1	2920-01-133-6312	97403	13226E0939
23	2	5315-00-616-5514	96906	MS35756-6
23	3	5305-00-363-3990	97403	13218E0504-51
23	4		97403	9786E107-3
23	5	5340-00-797-4641	97403	9786E129-3



SECTION IV CROSS-REFERENCE INDEXES

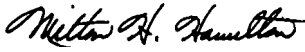
FIG.	ITEM	FIGURE AND ITEM NUMBER INDEX		PART NUMBER
		STOCK NUMBER	CAGEC	
23	6	2920-00-797-5897	97403	9786E128
23	6	2920-01-131-8253	97403	13226E0929
23	7	5310-00-857-5559	96906	MS2104525
23	8		97403	9787E60
23	8	2920-01-237-3669	97403	13226E1610
23	9	5330-01-237-3715	97403	13214E7063
23	10		97403	13214E7049-1
23	11	5330-00-797-3502	97403	13214E7060-1
23	12	5330-00-797-4630	97403	13214E7060-2
23	13	5365-00-797-3499	97403	13214E7060-3
23	14	5330-00-608-6432	96906	MS28775-237
23	15		97403	13218E0517-55
23	16	5310-00-962-7709	97403	13218E0320-53
23	17		97403	9787E41-2
23		2920-01-178-4979	97403	13226E1700
23		2805-00-832-8022	97403	13214E8216
24	1	2805-00-788-0420	97403	9787E53
24	2			9787E55
24	3	3110-00-100-3698	97403	13214E7049-2
25	1	5305-00-797-3535	97403	13215E3831
25	2	5330-00-797-4639	97403	13206E1459
25	3	5365-00-584-6620	96906	MS16632-1037
25	4		97403	9787E52-1
25	5		97403	9787E48
25	6	2805-00-797-4636	97403	9786E93-3
25		2805-00-832-5672	97403	13214E8186
26	1		97403	9787E10
26	2		97403	9787E11
26	3	2805-00-797-3536	97403	9786E16-3
26	4		97403	13214E7063
26	5	3110-00-183-6715	96906	MS17131-5
26	6		97403	13214E7049-1
26	7	5340-00-994-1632	96906	MS35914-109
26	8		96906	MS35914-112
26	9	5340-00-050-1511	96906	MS9380-06
26		2805-00-832-5677	97403	13214E8205



TM 9-2805-257-24P  
TO 38G2-103-4  
SL-4-03521B

By Order of the Secretaries of the Army, Air Force, and Navy (Including the Marine Corps):

Official:

  
MILTON H. HAMILTON  
*Administrative Assistant to the  
Secretary of the Army*  
04268

**GORDON R. SULLIVAN**  
*General, United States Army  
Chief of Staff*

**MERRILL A. McPEAK**  
*General, USAF  
Chief of Staff*

Official:

**RONALD W. YATES**  
*General, USAF  
Commander, Air Force Materiel Command*

**DAVID E. BOTTORFF**  
*Rear Admiral, CEC, US Navy  
Commander  
Navy Facilities Engineering  
Command*

**RONALD D. ELLIOT**  
*Executive Director  
Marine Corps Systems Command*

DISTRIBUTION:

To be distributed in accordance with DA Form 12-25-E, block no. 6048, requirements for TM9-2805-257-24P.



RECOMMENDED CHANGES TO EQUIPMENT TECHNICAL PUBLICATIONS



THEN... JOT DOWN THE DOPE ABOUT IT ON THIS FORM. CAREFULLY TEAR IT OUT, FOLD IT AND DROP IT IN THE MAIL!

SOMETHING WRONG WITH THIS PUBLICATION?

FROM: (PRINT YOUR UNIT'S COMPLETE ADDRESS)

PFC JOHN DOE  
COA, 3d ENGINEER BN  
FT. LEONARDWOOD, MA 63108

DATE SENT

PUBLICATION NUMBER

TM 9-2805-257-24P

PUBLICATION DATE

30 APRIL 1993

PUBLICATION TITLE

ENGINE, GASOLINE, 3HP  
MILITARY STANDARD MODELS

BE EXACT... PIN-POINT WHERE IT IS

PAGE NO	PARA-GRAPH	FIGURE NO	TABLE NO
6	2-1 a		
B1		4-3	
125	line 20		

IN THIS SPACE TELL WHAT IS WRONG AND WHAT SHOULD BE DONE ABOUT IT:

In line 6 of paragraph 2-1a the manual states the engine has 6 Cylinders. The engine on my set only has 4 Cylinders. Change the manual to show 4 Cylinders.

Callout 16 on figure 4-3 is pointing at a bolt. In key to figure 4-3, item 16 is called a shim - Please correct one or the other.

I ordered a gasket, item 19 on figure B-16 by NSN 2 910-05-762-3001. I got a gasket but it doesn't fit. Supply says I got what I ordered, so the NSN is wrong. Please give me a good NSN

PRINTED NAME, GRADE OR TITLE, AND TELEPHONE NUMBER

JOHN DOE, PFC (268) 317-7111

SIGN HERE

JOHN DOE

DA FORM 2028-2  
1 JUL 79

PREVIOUS EDITIONS ARE OBSOLETE.  
DRSTS-M Overprint 1, 1 Nov 80

P.S.--IF YOUR OUTFIT WANTS TO KNOW ABOUT YOUR RECOMMENDATION MAKE A CARBON COPY OF THIS AND GIVE IT TO YOUR HEADQUARTERS

TEAR ALONG PERFORATED LINE

1 Nov 80

FILL IN YOUR  
UNITS ADDRESS



FOLD BACK

DEPARTMENT OF THE ARMY

---

---

OFFICIAL BUSINESS

COMMANDER  
U.S. ARMY AVIATION AND TROOP COMMAND  
ATTN: AMSAT-I-MP  
4300 GOODFELLOW BOULEVARD  
ST. LOUIS, MO 63120-1798

TEAR ALONG PERFORATED LINE

RECOMMENDED CHANGES TO EQUIPMENT TECHNICAL PUBLICATIONS

**SOMETHING WRONG WITH THIS PUBLICATION?**



THEN... JOT DOWN THE DOPE ABOUT IT ON THIS FORM. CAREFULLY TEAR IT OUT. FOLD IT AND DROP IT IN THE MAIL!

FROM: (PRINT YOUR UNIT'S COMPLETE ADDRESS)

DATE SENT

PUBLICATION NUMBER

TM 9-2805-257-24P

PUBLICATION DATE

30 APRIL 1993

PUBLICATION TITLE

ENGINE, GASOLINE, 3HP  
MILITARY STANDARD MODELS

BE EXACT... PIN-POINT WHERE IT IS

PAGE NO	PARA-GRAPH	FIGURE NO	TABLE NO

IN THIS SPACE TELL WHAT IS WRONG AND WHAT SHOULD BE DONE ABOUT IT:

TEAR ALONG PERFORATED LINE

PRINTED NAME, GRADE OR TITLE, AND TELEPHONE NUMBER

SIGN HERE

DA FORM 2028-2  
1 JUL 79

PREVIOUS EDITIONS ARE OBSOLETE.  
DRSTS-M Overprint 2, 1 Nov 80.

P.S.--IF YOUR OUTFIT WANTS TO KNOW ABOUT YOUR RECOMMENDATION MAKE A CARBON COPY OF THIS AND GIVE IT TO YOUR HEADQUARTERS.

1 Nov 80

FILL IN YOUR  
UNITS ADDRESS



FOLD BACK

DEPARTMENT OF THE ARMY

---

---

OFFICIAL BUSINESS

COMMANDER  
U.S. ARMY AVIATION AND TROOP COMMAND  
ATTN: AMSAT-I-MP  
4300 GOODFELLOW BOULEVARD  
ST. LOUIS, MO 63120-1798

TEAR ALONG PERFORATED LINE



RECOMMENDED CHANGES TO EQUIPMENT TECHNICAL PUBLICATIONS

**SOMETHING WRONG WITH THIS PUBLICATION?**



THEN... JOT DOWN THE DOPE ABOUT IT ON THIS FORM. CAREFULLY TEAR IT OUT. FOLD IT AND DROP IT IN THE MAIL!

FROM: (PRINT YOUR UNIT'S COMPLETE ADDRESS)

DATE SENT

PUBLICATION NUMBER

TM 9-2805-257-24P

PUBLICATION DATE

30 APRIL 1993

PUBLICATION TITLE

ENGINE, GASOLINE, 3HP  
MILITARY STANDARD MODELS

BE EXACT... PIN-POINT WHERE IT IS

PAGE NO	PARA-GRAPH	FIGURE NO	TABLE NO

IN THIS SPACE TELL WHAT IS WRONG AND WHAT SHOULD BE DONE ABOUT IT:

PRINTED NAME, GRADE OR TITLE, AND TELEPHONE NUMBER

SIGN HERE:

TEAR ALONG PERFORATED LINE

**DA** FORM 2028-2  
1 JUL 79

PREVIOUS EDITIONS ARE OBSOLETE.  
DRSTS-M Overprint 2, 1 Nov 80.

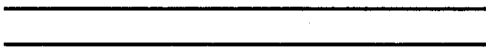
PS.--IF YOUR OUTFIT WANTS TO KNOW ABOUT YOUR RECOMMENDATION MAKE A CARBON COPY OF THIS AND GIVE IT TO YOUR HEADQUARTERS.

FILL IN YOUR  
UNITS ADDRESS



FOLD BACK

DEPARTMENT OF THE ARMY



OFFICIAL BUSINESS

COMMANDER  
U.S. ARMY AVIATION AND TROOP COMMAND  
ATTN: AMSAT-I-MP  
4300 GOODFELLOW BOULEVARD  
ST. LOUIS, MO 63120-1798

TEAR ALONG PERFORATED LINE

RECOMMENDED CHANGES TO EQUIPMENT TECHNICAL PUBLICATIONS



THEN... JOT DOWN THE  
DOPE ABOUT IT ON THIS  
FORM. CAREFULLY TEAR IT  
OUT. FOLD IT AND DROP IT  
IN THE MAIL!

**SOMETHING WRONG WITH THIS PUBLICATION?**

FROM: (PRINT YOUR UNIT'S COMPLETE ADDRESS)

DATE SENT

PUBLICATION NUMBER

TM 9-2805-257-24P

PUBLICATION DATE

30 APRIL 1993

PUBLICATION TITLE

ENGINE, GASOLINE, 3HP  
MILITARY STANDARD MODELS

BE EXACT... PIN-POINT WHERE IT IS

PAGE NO	PARA- GRAPH	FIGURE NO	TABLE NO
------------	----------------	--------------	-------------

IN THIS SPACE TELL WHAT IS WRONG  
AND WHAT SHOULD BE DONE ABOUT IT:

TEAR ALONG PERFORATED LINE

PRINTED NAME, GRADE OR TITLE, AND TELEPHONE NUMBER

SIGN HERE

DA FORM 2028-2  
1 JUL 79

PREVIOUS EDITIONS  
ARE OBSOLETE.  
DRSTS-M Overprint 2, 1 Nov 80.

P.S.--IF YOUR OUTFIT WANTS TO KNOW ABOUT YOUR  
RECOMMENDATION MAKE A CARBON COPY OF THIS  
AND GIVE IT TO YOUR HEADQUARTERS.

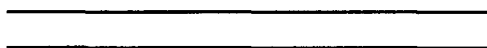
1 Nov 80

FILL IN YOUR  
UNITS ADDRESS



FOLD BACK

DEPARTMENT OF THE ARMY



OFFICIAL BUSINESS

COMMANDER  
U.S. ARMY AVIATION AND TROOP COMMAND  
ATTN: AMSAT-I-MP  
4300 GOODFELLOW BOULEVARD  
ST. LOUIS, MO 63120-1798

TEAR ALONG PERFORATED LINE

# The Metric System and Equivalents

## Linear Measure

1 centimeter = 10 millimeters = .39 inch  
 1 decimeter = 10 centimeters = 3.94 inches  
 1 meter = 10 decimeters = 39.37 inches  
 1 dekameter = 10 meters = 32.8 feet  
 1 hectometer = 10 dekameters = 328.08 feet  
 1 kilometer = 10 hectometers = 3,280.8 feet

## Weights

1 centigram = 10 milligrams = .15 grain  
 1 decigram = 10 centigrams = 1.54 grains  
 1 gram = 10 decigram = .035 ounce  
 1 dekagram = 10 grams = .35 ounce  
 1 hectogram = 10 dekagrams = 3.52 ounces  
 1 kilogram = 10 hectograms = 2.2 pounds  
 1 quintal = 100 kilograms = 220.46 pounds  
 1 metric ton = 10 quintals = 1.1 short tons

## Liquid Measure

1 centiliter = 10 milliliters = .34 fl. ounce  
 1 deciliter = 10 centiliters = 3.38 fl. ounces  
 1 liter = 10 deciliters = 33.81 fl. ounces  
 1 dekaliter = 10 liters = 2.64 gallons  
 1 hectoliter = 10 dekaliters = 26.42 gallons  
 1 kiloliter = 10 hectoliters = 264.18 gallons

## Square Measure

1 sq. centimeter = 100 sq. millimeters = .155 sq. inch  
 1 sq. decimeter = 100 sq. centimeters = 15.5 sq. inches  
 1 sq. meter (centare) = 100 sq. decimeters = 10.76 sq. feet  
 1 sq. dekameter (are) = 100 sq. meters = 1,076.4 sq. feet  
 1 sq. hectometer (hectare) = 100 sq. dekameters = 2.47 acres  
 1 sq. kilometer = 100 sq. hectometers = .386 sq. mile

## Cubic Measure

1 cu. centimeter = 1000 cu. millimeters = .06 cu. inch  
 1 cu. decimeter = 1000 cu. centimeters = 61.02 cu. inches  
 1 cu. meter = 1000 cu. decimeters = 35.31 cu. feet

## Approximate Conversion Factors

To change	To	Multiply by	To change	To	Multiply by
inches	centimeters	2.540	ounce-inches	newton-meters	.007062
feet	meters	.305	centimeters	inches	.394
yards	meters	.914	meters	feet	3.280
miles	kilometers	1.609	meters	yards	1.094
square inches	square centimeters	6.451	kilometers	miles	.621
square feet	square meters	.093	square centimeters	square inches	.155
square yards	square meters	.836	square meters	square feet	10.764
square miles	square kilometers	2.590	square meters	square yards	1.196
acres	square hectometers	.405	square kilometers	square miles	.386
cubic feet	cubic meters	.028	square hectometers	acres	2.471
cubic yards	cubic meters	.765	cubic meters	cubic feet	35.315
fluid ounces	milliliters	29.573	cubic meters	cubic yards	1.308
pints	liters	.473	milliliters	fluid ounces	.034
quarts	liters	.946	liters	pints	2.113
gallons	liters	3.785	liters	quarts	1.057
ounces	grams	28.349	liters	gallons	.264
pounds	kilograms	.454	grams	ounces	.035
short tons	metric tons	.907	kilograms	pounds	2.205
pound-feet	newton-meters	1.356	metric tons	short tons	1.102
pound-inches	newton-meters	.11296			

## Temperature (Exact)

°F Fahrenheit temperature      5/9 (after subtracting 32)      Celsius temperature      °C

